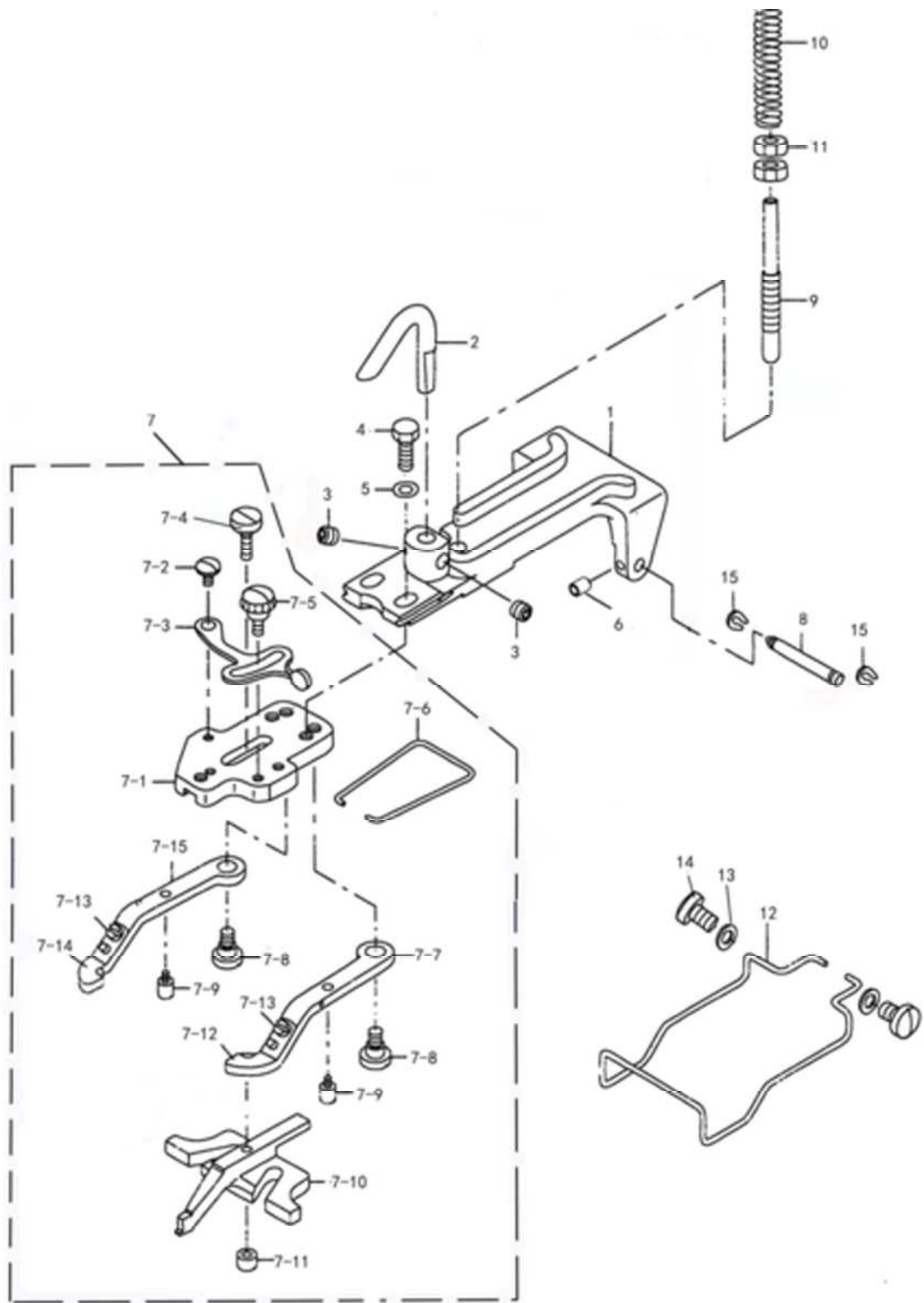


零件样本

(Parts Book)



1、钮钳机构部件/BUTTON CLAMP MECHANISM COMPONENTS

序号	零件件号	名称	数量	DESCRIPTION
1	300145	钮钳座	1	BUTTON CLAMP HOULDER
2	140902006	升降钩	1	BUTTON CLAMP LIFTING HOOK
3	402S14006	螺钉	2	SCREW 15/64-28 L=6
4	409S12001	螺钉	2	SCREW 3/16-32 L=13.5
5	40928001	垫圈	2	WASHER 5×10.5×1.5
6	413S14004	螺钉	2	SCREW M3×4
7	4091200100	钮钳杆座组件	1	BUTTON CLAMP
7-1	40912002	钮夹控制座	1	JAW LEVER HOLDER
7-2	409S20002	轴位螺钉	1	HINGE SCREW D=5.5 H=1.8
7-3	40912003	钮夹止动杆	1	SNAP FASTENER CLAMP STOP LEVER
7-4	409S20001	合叶螺钉	1	HINGE SCREW D=5.5 H=3
7-5	409S20003	钮夹螺钉	1	CLAMP SCREW
7-6	40927001	钮夹弹簧	1	BUTTON CLAMP SPRING
7-7	40912008	右钮夹钳夹	1	BUTTON CLAMP LEVER JAW RIGHT
7-8	409S20005	轴位螺钉	2	HINGE SCREW D=6.35 H=3.9
7-9	409S20004	钮夹止动销	2	BUTTON CLAMP STOP PIN
7-10	40901003	钮夹滑块	1	BUTTON CLAMP SLIDE
7-11	409S16001	螺母	1	NUT 9/64-40
7-12	40912009	钮夹右弹簧压板	1	BUTTON HOLDING SPRING RIGHT
7-13	409S11002	螺钉	2	SCREW 9/64-40 L=3.5
7-14	40912006	钮扣左弹簧压板	1	BUTTON HOLDING SPRING LEFT
7-15	40912005	左钮夹钳夹	1	BUTTON CLAMP LEVER JAW LEFT
8	40902002	合叶销	1	HINGE PIN
9	409S30002	钮钳调压杆	1	BUTTON CLAMP PRESSUER ADJUSTIN
10	40927002	钮夹压力弹簧	1	PRESSUER ADJUSTING SPRING
11	409S16003	螺母	2	NUT 1/4-40
12	40927003	手指保护架	1	FINGER GUARD
13	30128010	垫圈	2	WASHER 4.6×12×1.5
14	402S11007	螺钉	2	SCREW 11/64-40 L=3.5
15	H05002	GB/T896-1986 挡圈 3	2	E-RING 3

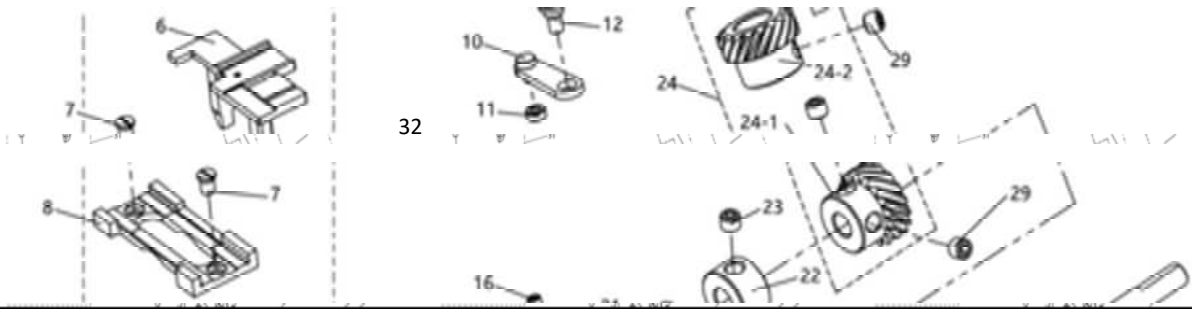
1、立扣机构部件/VERTICAL BUTTON CLAMP MECHANISM COMPONENTS

序号	零件件号	名称	数量	DESCRIPTION
1	14090100500	立扣夹组件	1	STAND BUTTON CLAMP
2	116S11005	螺钉	1	SCREW 11/64-40 L=6
3	140901005	钮夹体	1	BUTTON
4	140902006	升降钩	1	LIFTING HOOK
5	140908001	挡圈	1	RETAINING RING
6	140916007	立扣压脚 6	1	PRESSER FOOT 6
7	140916003	立扣压脚 4	1	PRESSER FOOT 4
8	140916004	立扣压脚 4.5	1	PRESSER FOOT 4.5
9	140916005	立扣压脚 5	1	PRESSER FOOT 5
10	140916006	立扣压脚 5.5	1	PRESSER FOOT 5.5
11	140916008	立扣压脚 6.5	1	PRESSER FOOT 6.5
12	140916009	立扣压脚 7	1	PRESSER FOOT 7
13	140916010	立扣压脚 7.5	1	PRESSER FOOT 7.5
14	140916011	立扣压脚 8	1	PRESSER FOOT 8
15	140916012	立扣压脚 8.5	1	PRESSER FOOT 8.5
16	140916013	立扣压脚 9	1	PRESSER FOOT 9
17	140927001	扭簧	2	TORSIONAL SPRING
18	140914002	送料板	1	FEED PLATE
19	140914003	送布牙 A	1	FEED DOG A
20	140914004	送布牙 B	1	YOKE SLIDE
21	140914005	送布牙 C	1	FEED DOG C
22	140916014	夹扣板	1	CLAMP BUTTON PLATE
23	140902001	夹扣杠杆轴	1	LEVER SHAFT
24	140902002	夹扣杠杆	1	CLAMP BUTTON LEVER
25	140902004	松扣压杆	1	LOOSEN BUTTON LEVER
26	140902005	松口压块	1	LOOSEN BUTTON BLOCK
27	140902003	夹扣柱	1	CLAMP BUTTON POST
28	409S14002	内六角平面端紧定螺钉	1	SCREW 11/64-40
29	201S11014	螺钉	1	SCREW 11/64-40
30	409S12001	用于钮钳座的螺钉	1	SCREW
31	40928001	垫圈	1	WASHER
32	14090200700	钮钳提升杆钩组件	1	LIFTING HOOK ASSEMBLY
33	40903020	钮钳提升杆滚筒	1	LIFTING HOOK ROLLER
34	40928021	垫圈	1	WASHER
35	S05192	螺钉 M3×6	1	SCREW M3×4

2、机壳部件/ARM & MISCELLANEOUS COVER COMPONENTS

序号	零件件号	名称	数量	DESCRIPTION
1	4091206200	面板盖组件	1	FACE PLATE COMPL
2	406S11009	螺钉	4	SCREW 11/64-40 L=8
3	40927004	第三夹线弹簧	1	TENSION SPRING
4	40902003	夹线螺栓	1	NIPPER RELEASING STUD
5	403S11011	开槽大圆柱头螺钉 M4x6	1	SCREW M4×6
6	40913002	第四线导向装置	1	THREAD GUIDE NO. 4
7	4091301400	3号线张力器组件	1	THREAD TENSION NO. 3 ASM.
8	S04078	复合槽盘头螺钉	4	SCREW M4×8
9	41711014	电线夹 6.4	2	WIRE CLIP
10	140930014	LED灯	1	LED LAMP
11	40912067	侧盖弹簧片	4	SIDE COVER SPRING
11	417S30025	十字槽小盘头螺钉(带垫圈)	13	SCREW M4×10
12	S04078	复合槽盘头螺钉	4	SCREW M4×8
13	S04078	复合槽盘头螺钉	4	SCREW M4×8
14	930000795	左侧盖板	1	SIDE COVER LEFT
15	930000794	右侧盖板	1	SIDE COVER RIGHT
16	S05024	内六角圆柱头螺钉 M8x25	4	SCREW M8 L=25
17	P02021	圆锥销 6x20	2	GUIDE PIN
18	1409NS12008	开槽六角头螺栓	1	SET SCREW
19	140912023	底座防油罩	1	BED OIL SHELD
20	402S11007	一字开槽盘头螺钉	2	SCREW 11/64-40 L=7.8
21	140912016	下活动盖	1	LOOPER COVER
22	40128001	波形垫圈	3	SPRING WASHER
23	409S20006	开槽圆柱头轴位螺钉	1	HINGE SCREW D=6 H=2.8
24	40928020	垫圈	2	WASHER
25	140911005	电机罩	1	MOTOR COVER
26	140911006	右盖	1	RIGHT COVER
27	40122017	橡皮塞	3	RUBBER PLUG
28	40902019	左侧盖轴	1	SIDE COVER HINGE SHAFT LEFT
29	S05133	内六角圆柱头螺钉 M4×12	1	SCREW M4×12
30	40122017	橡皮塞	1	RUBBER PLUG
31	S05124	内六角螺钉 M5×16	1	SCREW M5×16
32	417S30025	螺栓(带垫圈)	6	SCREW
33	140911004	后盖	1	REAR COVER
34	140911008	左盖	1	SIDE COVER LEFT
35	S04078	复合槽盘头螺钉	4	SCREW M4×8
36	930000792	后盖板	1	BACKBOARD
37	140923006	滴油毡	1	OIL DRIP FELT
38	140901027	油盘	3	OIL RESERVOIR
39	14093000700	一体电控组件	1	CONTROL BOX
39-1	19540007600	主板电路板/焊接	1	MOTHERBOARD CIRCUIT BOARD
39-2	195401028	散热底板	1	HEAT DISSIPATION BOTTOM PLATE
40	40111005	扎带(小)	3	RIBBON
41	41711015	电线夹	1	WIRE CLAMP
42	140912034	操作面板支架	1	OPERATIONG PANEL BRACKET
43	S05133	内六角圆柱头螺钉 M4×12	2	SCREW M4×12
44	61910001	扎带	1	RIBBON
45	140937020	手柄警告标签	1	WARNING SIGNS
46	1409NS10002	连接螺栓	4	CONNECTING BOLTS
47	41322017	橡胶垫	2	RUBBER PAD
48	11023002800	脚踏板	1	PEDALS
48-1	195111100	调速器外壳	1	GOVERNOR CASING
48-2	19950039400	调速器电路板/贴片	1	GOVERNOR CIRCUIT BOARD
48-3	195100472	调速器线组件	1	PEDAL WIRE
49	140930006	操作面板	1	OPERATIONG PANEL
49-1	19540008500	操作面板电路板	1	OPERATING SURFACE
49-2	195437013	贴膜	1	FILM

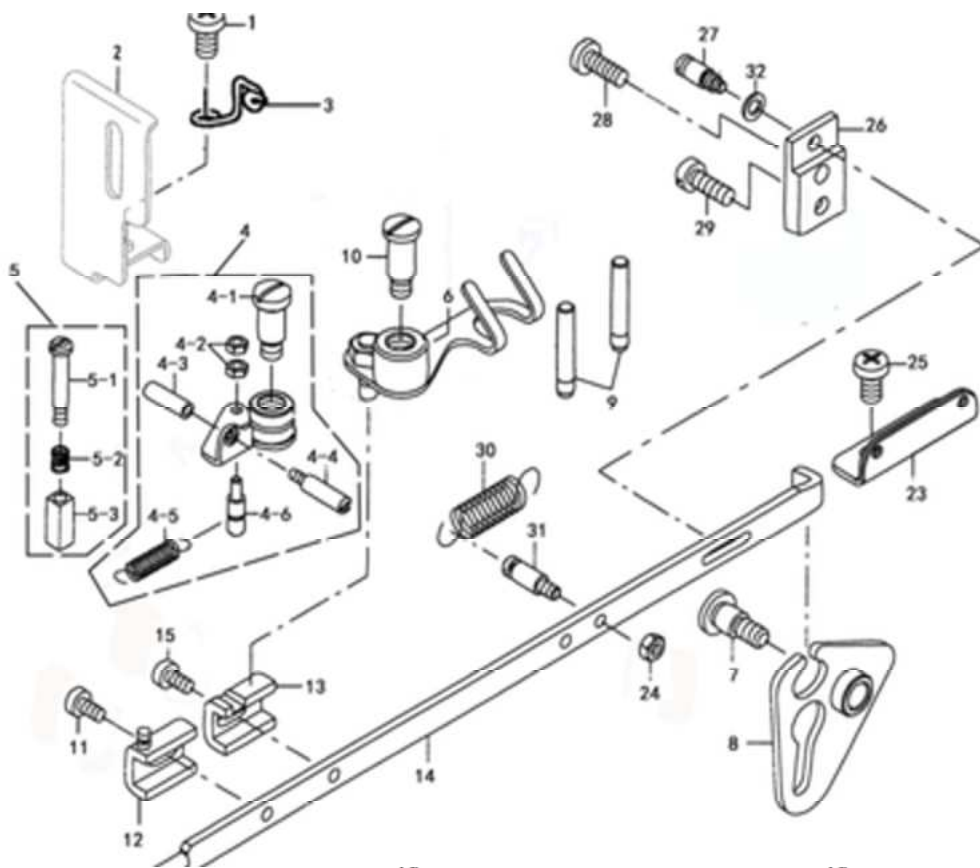
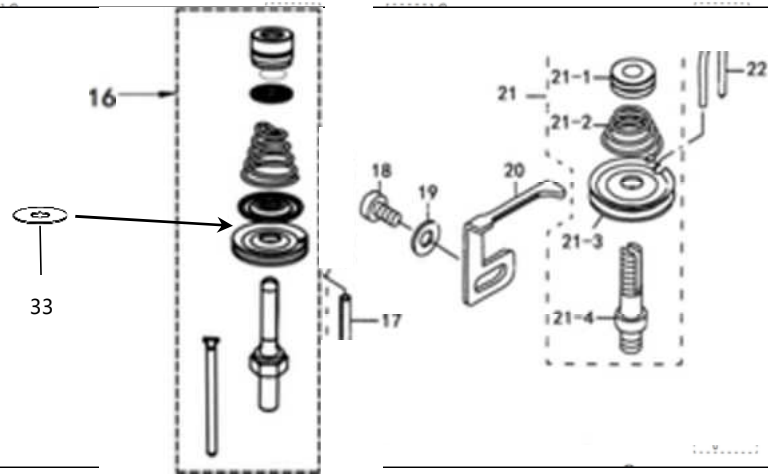
13-1



32

3、下轴部件/LOOPER SHAFT MECHANISM COMPONENTS

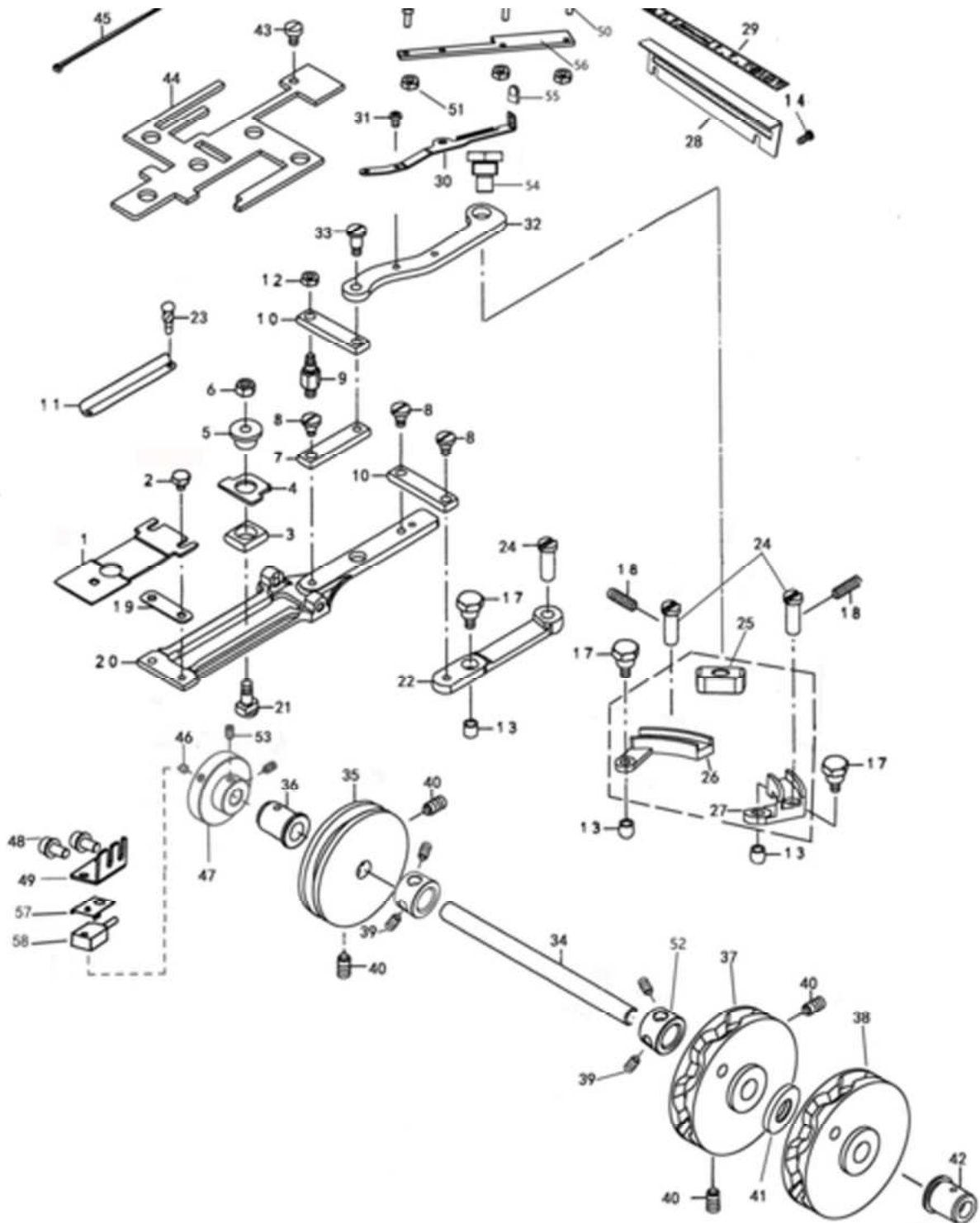
序号	零件件号	名称	数量	DESCRIPTION
1	40908002	挡圈	1	THRUST COLLAR D=7.94 W=7
2	409S11012	螺钉	1	SCREW 9/64-40 L=6
3	409S11031	螺钉	1	SCREW 9/64-40 L=3.5
4	409S11010	螺钉	1	SCREW 11/64-40 L=7.8
5	40912021	导向线杆（打捆针导向器）	1	NEEDLE GUARD
6	40909001	插入导向滑板	1	POSITONGNING FINGER YOKE SLIDE
7	409S17001	螺钉	2	SCREW 11/64-40 L=6.5
8	40909002	导向卡箍（压铁插孔）	1	YOKE SLIDE INSERT
9	40912022	滑块（轭铁片）	1	YOKE SLIDE
10	4090500100	环形定位杆	1	ASSY LOOP POSITIONING FINGER L
11	40903003	滚珠	1	LOOP POSITIONNING FINGER CAM RO
12	409S20008	轴位螺钉	1	HINGE SCREW D=6.35 H=2.4
13	14091500100	针板组件	1	THROAT PLATE SET
13-1	40901005	针板	1	THROAT PLATE ASM.
13-2	40919003	定刀	1	COUNTER KNIFE
13-3	-----	螺钉	2	SCREW1/8-44 L=3.0
13-4	4091900100	动刀	1	MOVING KNIFE ASM.
13-5	-----	螺钉	1	HINGE SCREW D=6 H=0.85
14	1409NS17002	螺钉	3	SCREW 11/64-40 L=9.5
15	40910001	环形凸轮	1	LOOP POSITIONING FINGER CAM
16	409S14002	螺钉	4	SCREW 11/64-40 L=3.5
17	40902006	连接轴	1	CAM AND LOOPER SLEEVE
18	409S15004	螺钉	2	SCREW 15/64-28 L=4
19	40910002	后凸轮	1	LOOP POSITIONGNING FINGER CAM RE
20	140903031	下轴前套	1	LOOPER SHAFT BUSHING FRONT
21	401S14001	螺钉	2	SCREW 15/64-28 L=8
22	140908004	下轴挡圈	1	THRUST COLLAR
23	402S14002	内六角平端紧定螺钉	2	SCREW 1/4-40 L=5
24	14092500800	斜齿轮副组件	1	GEAR PAIR COMPONENTS
24-1	-----	下轴齿轮	1	LOOPER SHAFT DRIVER GEAR ASM.
24-2	402S14002	内六角紧定螺钉	4	SCREW 1/4-40 L=6
25	30624001	端面轴承	2	THRUST BALL BEARING
26	140928005	轴承垫圈	4	BEARING WASHER
27	140903007	下轴后套	1	LOOPER SHAFT BUSHING REAR
28	14092500700	蜗杆组件	1	WORM ASM.
28-1	-----	蜗杆	1	WORM
28-2	402S14002	内六角紧定螺钉	2	SCREW 1/4-40 L=6
29	-----	凸轮轴从动齿轮	1	CAM SHAFT DRIVEN GEAR.
30	140902008	下轴	1	LOOPER SHAFT
31	40917001	钩圈	1	LOOPER
32	14092500600	拨线板滑块组件	1	LEATHER CUSHION



4、绕线和过线部件/NIPPER & TENSION PARTS COMPONENTS

序号	零件件号	名称	数量	DESCRIPTION
1	409S11013	螺钉	1	SCREW 15/64-28 L=9
2	—————	针杆防护罩(附件)	1	NEEDLE BAR GUARD
3	40913012	2号导线钩	1	THREAD GUIDE
4	4091202500	导线装置	1	NIPPER COMPL
4-1	—————	轴位螺钉	1	HINGE SCREW
4-2	409S16005	螺母	2	NUT
4-3	409S16006	松线螺母	1	NUT
4-4	409S20011	松线销	1	LOOPER SHAFT BUSHING REAR
4-5	40927007	夹线杆拉伸弹簧	1	NIPPER BAR BLOCK SPRING
4-6	409S30004	弹簧销	1	NIPPER BAR BLOCK SPRING SCREW
5	40909003	夹线座	1	NIPPER BLOCK ASM.
5-1	409S20012	螺栓	1	HINGE SCREW D=4 H=20
5-2	40927008	夹线座弹簧	1	HIPPER SLIDE BLOCK
5-3	—————	夹线座	1	NIPPER BLOCK
6	4091300400	引线杆组件	1	THREAD PULL OFF LEVER ASM.
7	409S20014	驱动杆轴位螺钉	1	HINGE SCREW D=7.94 H=8
8	4091202700	夹线杆驱动杆组件	1	NIPPER BAR ACTUATING LEVER ASM.
9	40926006	导线杆	2	THREAD GUIDE PIN
10	409S20013	轴位螺钉	1	HINGE SCREW D=7.94 H=15
11	409S11014	螺钉	1	SCREW 3/16-28 L=9
12	40912029	夹线杆驱动块	1	NIPPER BAR BLOCK
13	40912030	拨线杆驱动块	1	TENSION LEVER ROCKING PIECE
14	40912031	夹线杆	1	NIPPER BAR
15	409S11014	螺钉	1	SCREW 3/16-28 L=9
16	14090003500	2号夹线杆组件	1	TENSION POST ASM NO.2
17	P03009	弹性圆柱销	1	SPRING PIN 3×16
18	409S11014	螺钉	1	SCREW 3/16-28 L=9
19	40928001	垫圈	1	WASHER
20	40912034	释压杆	1	THREAD TENSION RELEASING LEVER
21	4091300800	1号夹线器组件	1	ASSY HTREAD RENSIION NO.1
21-1	409S16009	调节螺母	1	THREAD TENSION NUT
21-2	40927010	夹线器弹簧	1	FIRST THREAD TENSION SPRING
21-3	40913007	夹线板	2	THREAD RENSIION DISK NO.1
21-4	409S30007	第一夹线杆	1	THREAD RENSIION POST NO.2
22	40913009	导线钩	1	THREAD GUIDE
23	40913010	二眼线板	1	THREAD GUIDE NO.1
24	409S16024	螺母	1	NUT 1/8-44
25	409S11013	螺钉	1	SCREW 15/64-28 L=9
26	40912100	夹线杆滑块	1	NIPPER BAR BEARING BLOCK
27	409S30008	调节螺钉	1	ADJUSTING SCREW
28	409S11015	螺钉	1	SCREW 3/16-28 L=15.5
29	409S11016	螺钉	1	SCREW 3/16-28 L=9.5
30	40927011	2号钳杆弹簧	1	THREAD TENSION SPRING
31	409S30009	夹线杆拉伸弹簧螺钉	1	NIPPER BAR SPRING SCREW
32	40928005	垫圈	1	WASHER 4.8×9.4×0.8
33	140928006	夹线器皮垫	1	LEATHER CUSHION

У. ИИИИИИИ ИИИИИИИ ИИИИИИИ ИИИИИИИ



5、送料盘部件/FEED PLATE COMPONENTS

序号	零件件号	名称	数量	DESCRIPTION
1	40915001	送料板	1	FEED PLATE SMALL BUTTON
2	409S12003	螺钉	2	SCREW 3/16-28 L=6
3	40909004	交叉送料滑块	1	INDICATOR PIN BEARING BLOCK
4	40912036	交叉送料指示器	1	CROSSWISE FEED INDICATOR
5	40903010	指示器销	1	CROSSWISE FEED INDICATOR PIN
6	409S16012	螺母	1	NUT 1/4-24
7	40909005	滑板连接杆	1	SLIDE PLATE CONNECTING LINK
8	409S20015	轴位螺钉	3	HINGE SCREW D=6.35 H=4.8
9	409S30010	双头螺栓	1	STUD
10	40909006	连接杆	2	INTERMEDI CONNECTING LINK
11	40937001	交叉送料刻度盘	1	CROSSWISE FEED GRADVATED PLATE
12	409S16013	螺母	1	NUT 3/16-28
13	40903012	送料凸轮滚子	3	CAM ROLL
14	409S11003	螺钉	2	SCREW 3/16-28 L=9
15	40912208	手柄	1	HANDLE AND INDICATOR SPRING
16	421S10005	螺钉 M3×6	2	SCREW M3×6
17	409S30019	送料凸轮滚子螺栓	3	CAM ROLL SCREW STUD
18	401S14001	螺钉	5	SCREW 15/64-28 L=8
19	40912040	隔离板	1	SPACER PLATE
20	40901006	滑板	1	FEED PLATE
21	409S30012	交叉送料轴位螺钉	1	HINGE SCREW FOR CROSSWISE FEED
22	40904003	交叉送料调节杠杆	1	CROSSWISE FEED LEVER
23	—————	铆钉	2	RIVET
24	40926010	杆销	3	FEED STUD
25	401846	送料调节滑块	1	LENGTHWISE FEED LEVER SLIDE
26	401847	送料调节杠杆左	1	FEED LEVER L
27	401848	送料调节杠杆右	1	FEED LEVER R
28	140912031	送料调节刻度架	1	PLATE BASE
29	140937017	送料调节刻度条	1	GRADUATE PLATE
30	40912206	调节手柄	1	HANDLE AND INDICATOR SPRING
31	403S11027	螺钉	2	SCREW M4 L=7.5
32	40904004	调节手柄连接杆	1	INDICATOR SPRING CONNECTING LI
33	409S20016	轴位螺钉	1	HINGE SCREW D=6.35 H=9.6
34	40902022	凸轮轴	1	CAM SHAFT
35	140910002	16 弯送料凸轮	1	LENGRHWASE FEED CAM
36	40903040	凸轮轴左套	1	CAM SHAFT BUSHING LEFT
37	40910019	十字纵向送料盘	1	FEED CAM
38	40910004	纵向送料凸轮（一字）	1	LENGRHWASE FEED CAM(-)
39	402S14002	内六角平端紧定螺钉	2	SCREW 1/4-40 L=5
40	409S14005	螺钉	9	SCREW 9/32-28 L=13.5
41	40912087	垫圈	1	WASHER
42	40903039	凸轮轴右轴套	1	CAM SHAFT BUSHING RIGHT
43	409S11005	螺钉	1	SCREW 11/64-40 L=7.8
44	40923015	油毡	1	FEED HINGE SCREW FELT
45	61910003	扎带（小）	3	CABLE BAND
46	40930007	磁铁	1	MAGNET
47	40930003	信号轮	1	SINGLE WHEEL
48	417S30025	螺栓（带垫圈）	2	SCREW M4×12
49	140912006	传感器安装板	1	SENSOR MOUNTING PLATE
50	S05133	内六角圆柱头螺栓	3	SCREW M4×12
51	407N01002	自锁螺母	2	LOCKNUT
52	40908001	挡圈	2	RETAINING RING
53	402S14001	螺钉	2	SCREW 15/64-28 L=6
54	1409NS20003	连接杆螺钉	1	CONNECT SCREW
55	140944001	手柄套	1	HANDLE SLEEVE
56	140923005	油路毛毡	1	OIL FELT
57	140212028	传感器固定片	3	SENSOR FIXING DEVICE
58	195430015	感应器	1	SENSOR

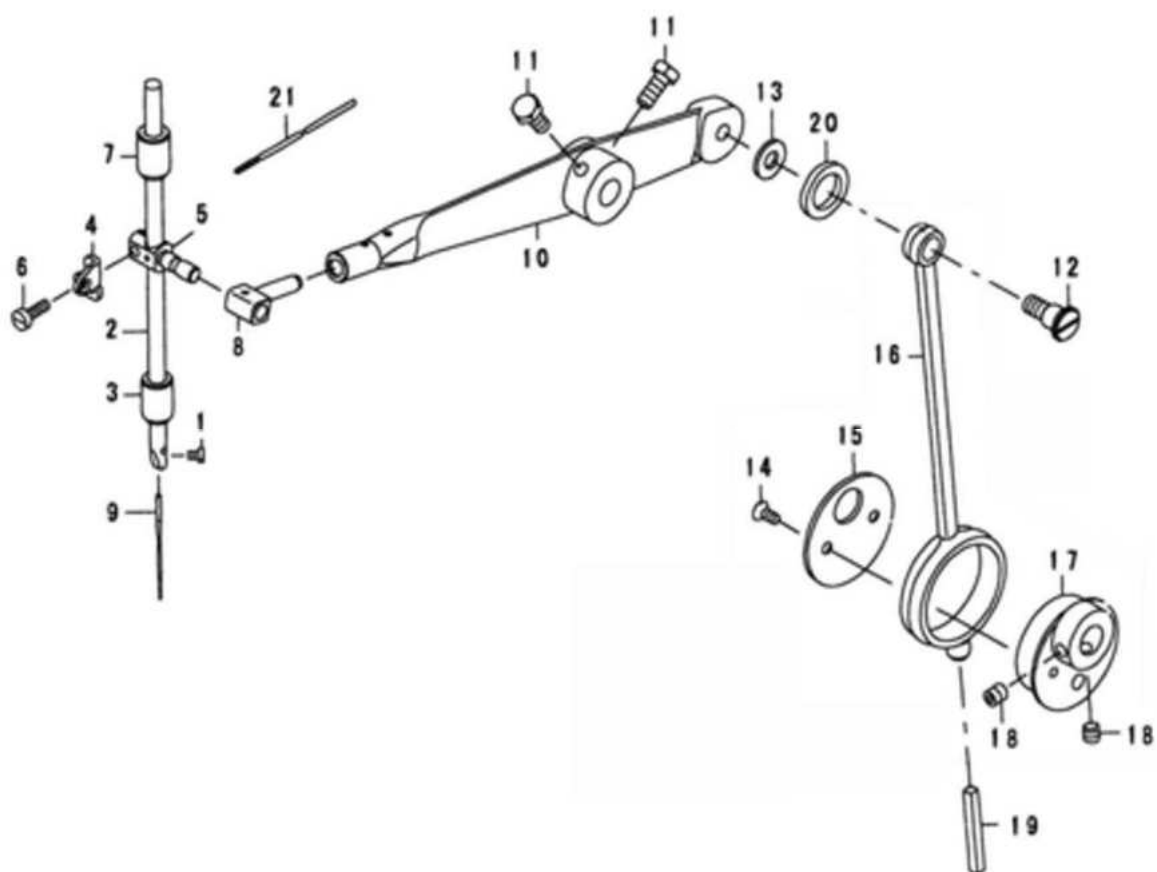
6、钮钳提升部件/BUTTON CLAMP LIFTER COMPONENTS

序号	零件号	名称	数量	DESCRIPTION
1	40901033	钮钳提升杆	1	LIFTING LEVER
2	40903016	轴衬	1	BUSHING
3	40902009	提升杆轴	1	LIFTING LEVER SHAFT
4	409S20036	开槽圆柱头轴位螺钉	2	HINGE SCREW D=6.35 H=3
5	401S16002	六角螺母	1	NUT 15/64-28
6	409S11021	开槽球面圆柱头螺钉	1	SCREW 11/64-40 L=14
7	40928014	平垫圈	1	WASHER 8.3×17.8×1.1
8	40922001	缓冲垫	1	CUSHION
9	40928014	平垫圈	1	WASHER 8.3×17.8×1.1
10	40928014	平垫圈	1	WASHER 8.3×17.8×1.1
11	14090200700	钮钳提升杆钩	1	BUTTON CLAMP LIFTING ROD COMPL
12	413S13005	螺钉 M6×10	1	SCREW M6×10
13	140912005	前剪线连接杆	1	CONNECTING LINK AGO
14	L01002	六角头螺栓	1	HEXAGON BOLT
15	4030500500	连接曲柄组件	1	FEED ADJUSTING JOINT
16	40901036	剪线杆底座	1	THREAD TRIMMING LEVER BASE
17	409S20037	开槽圆柱头轴位螺钉	1	HINGE SCREW D=7.94 H=4
18	40527015	弹簧	1	SPRING
19	N01004	六角螺母 M5	1	NUT M5
20	N01004	六角螺母 M5	4	NUT M5
21	40903020	提升杆滚子	1	LIFT ROD ROLLER
22	40928021	垫圈	1	WASHER 4×8×1.2
23	S05192	内六角平头螺钉 M3×6	1	SCREW M3×6
24	409S30013	连接螺钉	1	SCREW
25	409S16015	六角螺母	1	NUT 9/32-28
26	40912089	后剪线连接杆	2	CONNECTING LINK REAR
27	401S16002	六角螺母	1	NUT 15/64-28
28	140912032	大连杆	1	CRANK
29	409S20040	开槽圆柱头轴位螺钉	1	HINGE SCREW D=7.94 H=3
30	409S16013	六角螺母	1	NUT 3/16-28
31	40128034	垫圈	1	WASHER 6×18.3×2
32	409S16015	六角螺母	2	NUT 9/32-28
33	401S16002	六角螺母	1	NUT 15/64-28
34	140905003	抬剪曲柄连杆	2	MAGENT CONNECT POLE
35	140933013	抬剪步进电机	1	STEPPING MOTOR FOR LIFTING SHEAR
Jan-35	195130004	光栅座组件(1200线)	1	GRATING HOLDER COMPONENT (1200 LINES)
Feb-35	19540019300	编码器组件	1	ENCODER MODULE
Mar-35	951S04001	M3 十字盘螺钉	3	SCREW M3x6
Apr-35	195111046	编码器罩壳	1	ENCODER CASING
May-35	950S13014-	M3 十字盘螺钉	4	SCREW M3x10
36	S05133	内六角螺钉 M4X12	1	SCREW M4x12
37	403S16006	六角螺母	1	HEXAGON NUT
38	403S16005	六角螺母	1	HEXAGON NUT
39	140610005	抬剪曲柄	1	LIFTING SHEAR CRANK
40	40303019	滚筒	1	ROLLER
41	403S20010	轴位螺钉	1	AXIAL SCREW
42	11327001	弹簧	1	SPRING
43	40122017	橡皮塞	2	RUBBER PLUG WASHER 8.3×17.8×1.1
44	40922001	缓冲垫	2	CUSHION
45	413S14013	螺钉 M5×6	1	SCREW M5×6
46	140902010	抬剪曲柄轴	1	LIFTING SHEAR CRANK SHAFT
47	40324009	深沟球轴承 6000-ZZNR	1	DEEP GROOVE BALL BEARING
48	1409NS20002	螺钉销	1	SCREW PIN
49	413S13008	螺钉组件 M4×6	1	SCREW M4×6
50	403S20009	轴位螺钉	1	AXIAL SCREW
51	140910005	抬剪凸轮	1	LIFTING SHEAR CAM
52	402S14001	内六角紧定螺钉	2	SCREW
53	409S20023	开槽圆柱头轴位螺钉	1	HINGE SCREW D=6.35 H=13.5
54	40912090	切线连杆	1	THREAD TRIMMING LINK
55	409S20038	开槽圆柱头轴位螺钉	1	HINGE SCREW D=7.94 H=13
56	140903028	大连杆垫套	1	CUSHIONG COVER
57	409S14002	内六角平面端紧定螺	2	SCREW
58	30522004	油封	1	OIL SEAL

7、推针滑轮轴部件/NEEDLE DRIVING PULLEY SHAFT COMPONENTS

序号	零件件号	名称	数量	DESCRIPTION
1	40603020	挡圈	1	THRUST COLLAR
2	140924002	端面轴承	1	THRUST BALL BEARING
3	40928004	轴承垫圈	1	BEARING WASHER
4	140903010	驱动轴左套	1	DRIVE SHAFT LEFT SLEEVE
5	40928004	轴承垫圈	1	BEARING WASHER
6	40603020	挡圈	1	THRUST COLLAR
7	14092500800	斜齿轮副组件	1	HELICAL GEAR PAIR ASSEMBLY
8	140902022	驱动轴	1	DRIVE SHAFT
9	140903011	轴承长衬套	1	BEARING BUSH
10	14090103100	联轴器组件	1	COUPLING DRIVE
11	B01001	深沟球轴承	1	DEEP GROOVE BALLBEARING
12	413S14013	螺钉 M5×6	2	SCREW M5×6
13	140933012	光电伺服电机	1	ECCENTRIC CAM
13-1	195112001	光栅座组件(600 线)	1	GRATING HOLDER COMPONENT (600 LINES)
13-2	19540008600	编码器组件	1	ENCODER MODULE
13-3	195111046	编码器罩壳	1	ENCODER CASING
14	S05124	内六角螺钉 M5×16	4	SCREW M5×16
15	14094400200	手轮组件	1	HANDWHEEL ASSEMBLY
16	1409NS14002	内六角锥端紧钉螺钉	1	HEXAGON CONE END FASTENING SCREW
17	136S14002	内六角螺钉	2	SCREW
18	403S11003	内六角螺钉	1	SCREW
19	136S14002	内六角螺钉	2	SCREW
20	—————	内六角平端紧定螺钉	1	SCREW
21	402S14002	内六角螺钉	2	SCREW
22	402S14006	内六角平端紧定螺钉	2	SCREW
23	—————	内六角平端紧定螺钉	6	SCREW

8. 针杆驱动部件 NEEDLE BAR DRIVING MECHANISM COMPONENTS



8、针杆驱动机构部件/NEEDLE BAR DRIVING MECHANISM COMPONENTS

序号	零件件号	名称	数量	DESCRIPTION
1	101S11006	支针螺钉	1	SCREW 1/8-44 L=4.5
2	40902027	针杆	1	NEEDLE ROD
3	40903026	针杆下套	1	NEEDLE BAR BUSHING LOWER
4	40913013	导线钩	1	NEEDLE BAR BALACE
5	40909016	针杆连接杆	1	NEEDLE BAR CLAMP
6	409S11024	螺钉	1	SCREW 9/64-40 L=12
7	40903035	针杆上套	1	NEEDLE BAR BUSHING UPPER
8	40909017	针杆轴衬套	1	NEEDLE BAR SLIDE BLOCK A
9	41017001	机针	1	NEEDLE TQ×1 #16
	41017004	机针	1	NEEDLE TQ×7 #16
10	40905007	针杆杠杆	1	NEEDLE BAR DRIVING LEVER
11	L02008	螺钉	2	SCREW M6 L=14
12	409S20025	合叶螺钉	1	HINGE SCREW D=9.54 H=8
13	40928027	垫圈	1	WASHER 7.5×16×1
14	409S11009	半沉头螺钉	2	SCREW 11/64-40 L=9.5
15	40912046	盖板	1	THRUST HOLDER
16	40905009	连杆	1	CRANK ROD
17	40910009	偏心凸轮	1	ECCENTRIC CAM
18	409S14001	内六角平端紧定螺钉	2	SCREW 1/4-40 L=6
19	40923012	油线	0.08	OIL WICK
20	40923005	油毡	1	OIL RETAINNING FELT
21	40323013	油线 2x2	0.125	OIL WICK

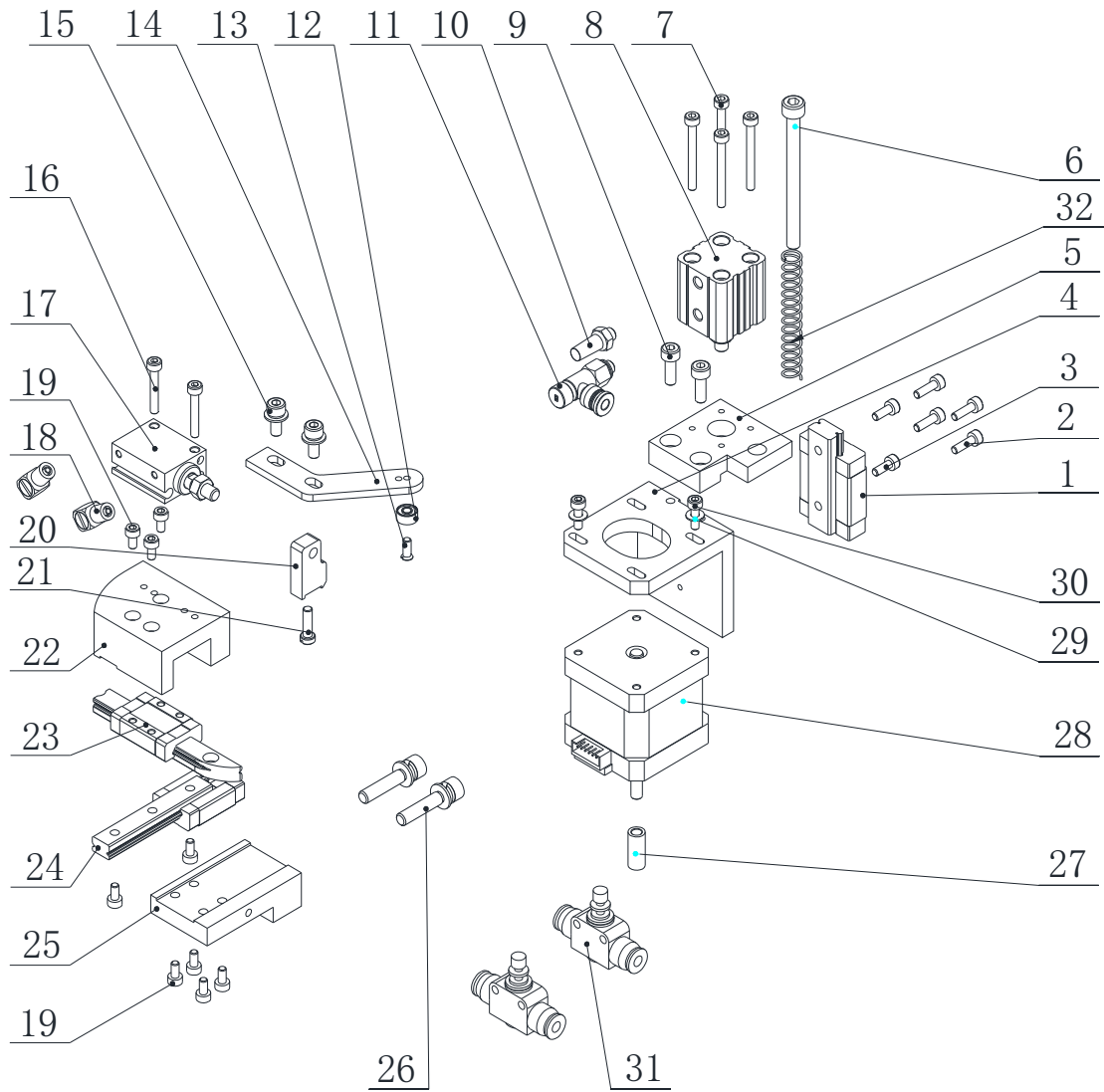
9、附件组件/ACCESSORY PARTS COMPONENTS

序号	零件件号	名称	数量	DESCRIPTION
1	10131002	螺丝刀 (大)	1	SCREW DRIVER LARGE
2	10131003	螺丝刀 (中)	1	SCREW DRIVER MIDDLE
3	10131004	螺丝刀 (小)	1	SCREW DRIVER SMALL
4	20131038	小油壶 (尖嘴)	1	OILER
5	40931019	定位尺	1	GAUGE
6	30131010	内六角扳手 (2.5mm)	1	INNER WERNCH 2.5mm
7	30131012	内六角扳手 (3mm)	1	INNER WERNCH 3mm
8	20131047	内六角扳手 (4mm)	1	INNER WERNCH 4mm
9	30131006	扳手 (8mm~10mm)	1	Wrench 8mm~10mm
10	40931025	扳手 (9mm~11mm)	1	Wrench 9mm~11mm
11	1383100300	线架组件	1	COTTON STAND ASSY 2DTHF
12	114131001	防尘罩	1	MACHINE COVER
13	40931009	螺钉 M6×70	4	SCREW M6×70
14	40128013	垫圈 6.2×13×1	4	WASHER 6.2×13×1
15	40912024	针杆护罩	1	NDDELE BAR GUARD
16	N01007	螺母 M6	4	NUT M6
17	409s11008	螺钉	2	SCREW 11/64-40 L=7
18	402s20032	轴位螺钉	1	HINGE SCREW D=6 H=2.5
19	40912020	安全板安装座	1	THE MOUNTING SEAT
20	40928002	垫圈	2	WASHER 4.5×10×0.8
21	40112008	安全板安装板	1	SAFETY BOARD MOUNTING PLATE
22	40128001	波形垫圈	1	SPRING WASHER
23	401s16003	螺帽	1	NUT 11/64-40
24	40911006	安全板	1	SAFETY BOARD
25	20131051	镊子	1	TWEEZERS
26	140937020	脚踏	1	Pedals
27	140231030	安全使用说明	1	SAFETY USER MANUAL
28	40911019	支撑杆	1	SUPPORT
29	195005001	脚踏连杆	1	FOOT LINK
30	41017001	TQ*1 16#机针	3	NEEDLE TQ×1#16
	41017004	TQ*7 16#机针	3	NEEDLE TQ×7#16
31	4091102000	纽扣盘组件	1	BUTTON BOX

10、自动送扣装置/ACCESSORY PARTS COMPONENTS

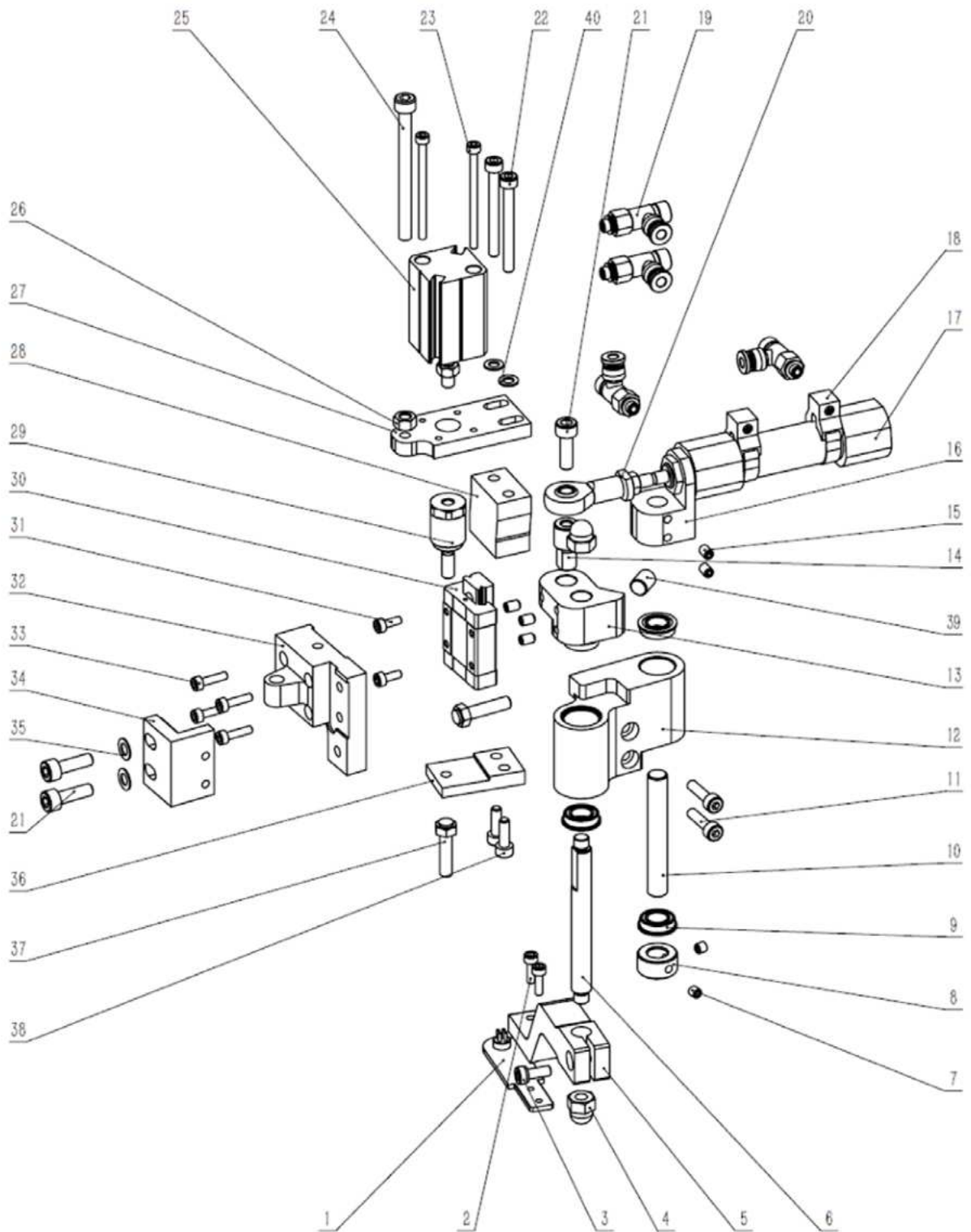
序号	零件件号	名称	数量	DESCRIPTION
1	1102218	自动送扣装置	1	BUTTON AUTO - FEEDING MACHINE

1、 压扣部件/PRESS BUTTON COMPONENTS



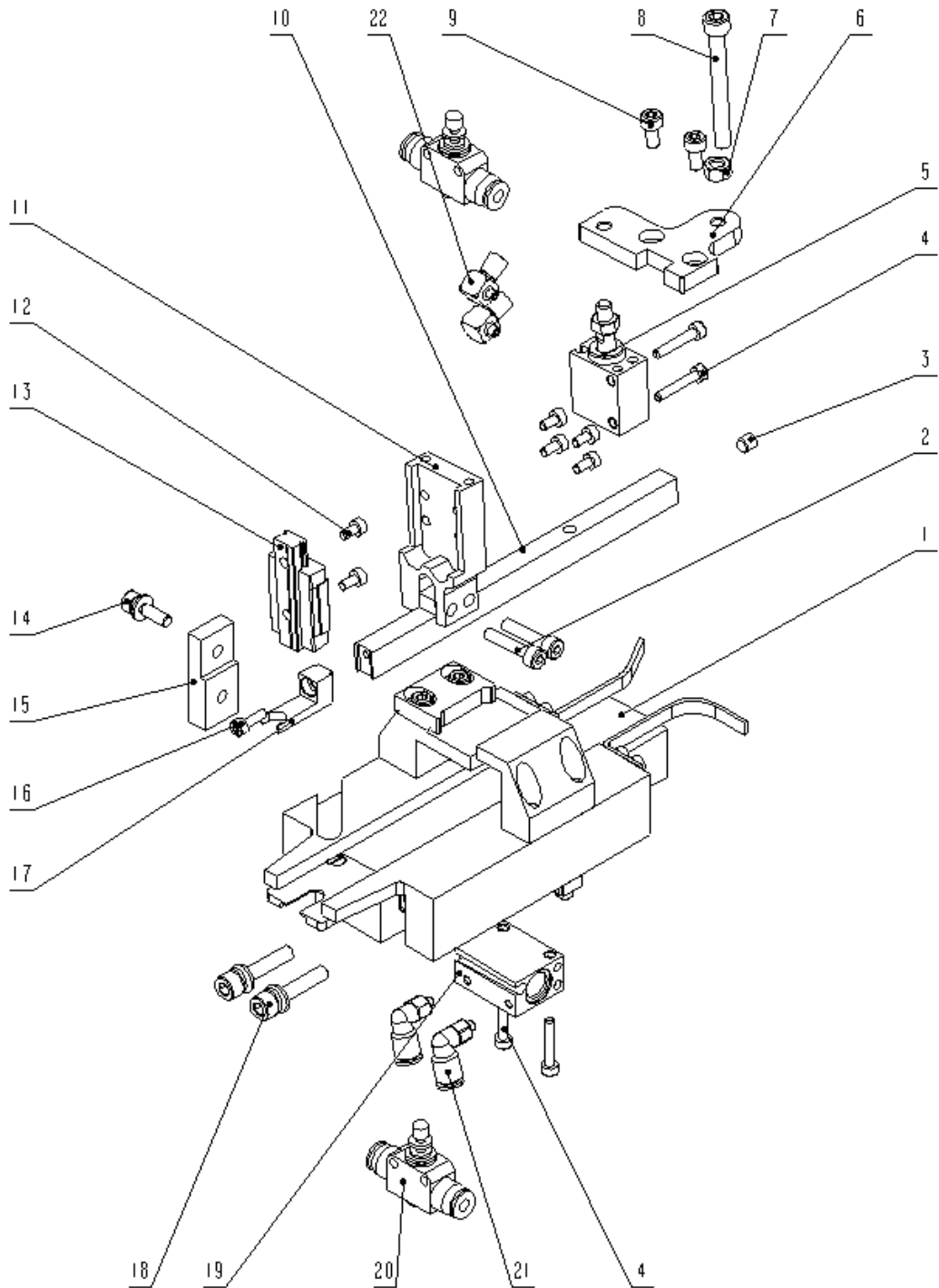
序号	公司件号	名称	DESCRIPTION	用量
1	140808001	线性导轨 12×43	Linear guide rail 12 × 43	2
2	S05052	内六角圆柱头螺钉 M3×10	Screw M3 × 10	4
3	S05094	内六角螺钉 M3×8	Screw M3 × 8	2
4	140801069	压扣电机安装板	Mounting plate of crimping motor	1
5	140801070	压扣气缸安装板	Crimping cylinder mounting plate	1
6	701S13022	内六角圆柱头螺钉 M5×45	Screw M5 × 45	1
7	S05599	内六角圆柱头螺钉 M3×30	Screw M3 × 30	4
8	140845001	压扣气缸	Cylinder ACQ12 × 10	1
9	S05133	内六角圆柱头螺钉 M4×12	Screw M4 × 12	2
10	140845005	消音器 BSLM5	Silencer bslm5	1
11	41845231	接头 ASL4-M5	Speed governing connector ASL4-M5	1
12	140324003	微型轴承 693ZZ	Micro bearing 693zz	1
13	138S17301	开槽沉头螺钉 M3×8	Screw M3×8	1
14	140801072	挡扣调节杆	Catch adjusting lever	1
15	421S13012	螺钉 M4×10(带垫)	Screw M4 × 10 (with cushion)	2
16	S05991	内六角圆柱头螺钉 M3×20	Screw M3×20	2
17	140845017	气缸 MU10×15	Cylinder MU10×15	2
18	140836003	全金属微型管接头	Micro air pipe connector	2
19	421S13038	内六角圆柱头螺钉 M3×6	Screw M3×6	9
20	140801073	挡扣连接块	Buckle connecting block	1
21	401S11003	复合槽盘头螺钉 SM9/64"×40×7	screw SM9/64" × 40 × 7	1
22	140801074	挡扣滑块座	Stopper slider seat	1
23	140808002	挡扣导轨 9×70	Linear rail 9 × 70	1
24	140808003	线性导轨 9×55	Linear guide 9 × 55	1
25	140801075	挡扣安装座	Retaining buckle mounting seat	1
26	403S13009	电机安装螺钉组件 M5×25	Screw assembly M5×25	2
27	140822001	压扣胶套(小)	Crimping rubber sleeve (small)	1
28	140833001	旋转电机	Rotating electrical machine	1
29	W01002	平垫圈 3	Flat washer 3	2
30	S05052	螺钉 M3×10	Screw M3 × 10	2
31	41845232	T形接管 KJT04	Throttle valve	2
32	140827001	压扣弹簧	Buckle spring	1

2、 送扣部件/ SEND BUTTON COMPONENTS



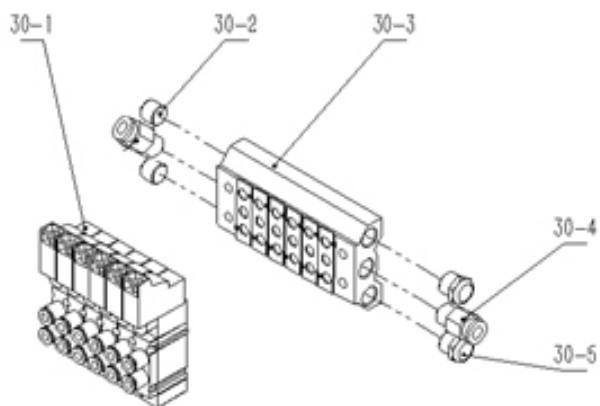
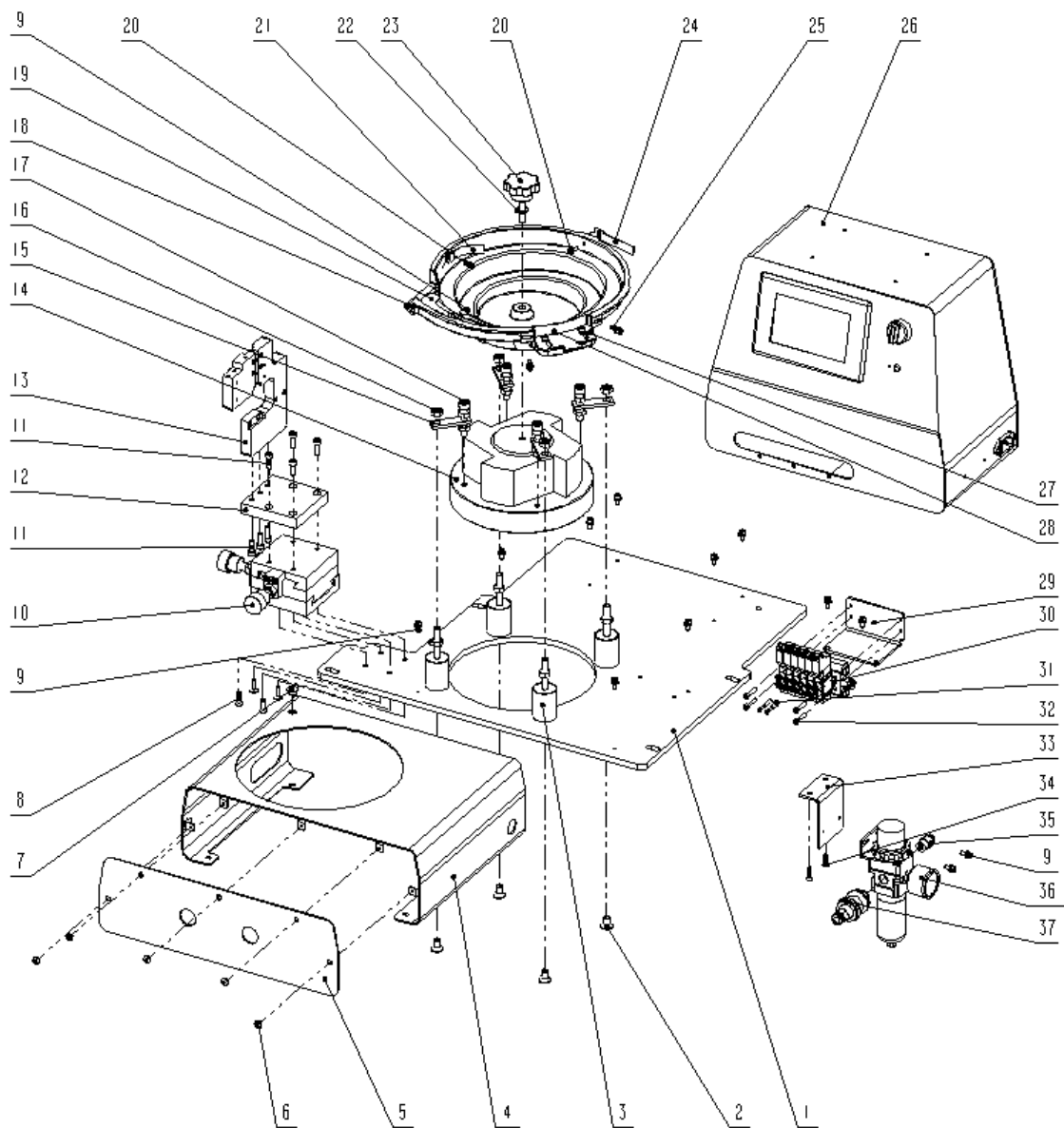
序号	公司件号	名称	DESCRIPTION	用量
1	140816030	一体四眼送扣爪 1.2×2.4	Integrated four eye buckle feeding claw 1.2 × 2.4	1
2	S05052	内六角圆柱头螺钉 M3×10	screw M3 × 10	2
3	413S13017	内六角圆柱头螺钉 M4×10	screw M4 × 10	1
4	417S16301	圆头螺母 M6×5	Round head NUT M6 × 5	2
5	140801076	送扣转臂	Turnbuckle feeding arm	1
6	140803001	送扣转动轴	Thread feeding rotating shaft	1
7	S10007	内六角凹端紧定螺钉 M4X4	screw m4x4	2
8	42108007	挡圈	Retaining ring	1
9	140824001	轴承 MFL148ZZ	Bearing mfl148zz	4
10	140826003	连接轴	Connecting shaft	1
11	S05118	内六角螺钉 M4×16(滚花)	Hexagon socket screw M4 × 16 (knurled)	2
12	140801077	送扣臂支座	Buckle feeding arm support	1
13	140801015	旋转曲柄	Rotating crank	1
14	140826002	连接销	Connecting pin	1
15	421S14005	螺钉 M4×6	Screw M4 × 6	5
16	140801010	旋转送料曲柄	Rotating feed crank	1
17	140845006	气缸	Cylinder	1
18	141730028	传感器固定绑带	Sensor fixing strap	2
19	41845231	接头 ASL4-M5	Speed governing connector ASL4-M5	4
20	4030500500	连接曲柄	Connecting the crank	1
21	S05124	螺钉 M5×16(滚花)	Screw M5 × 16 (knurled)	2
22	S05065	螺钉 M4×40	Screw M4 × 40	2
23	S05270	内六角平头螺钉 M3×40	Screw M3 × 40	2
24	L01863	内六角圆柱头螺钉 M5×60	Screw M5 × 60	1
25	140845003	摆臂上下气缸	Upper and lower cylinders of swing arm	1
26	N01004	六角螺母 M5	Hex nut M5	2
27	140801078	压扣气缸安装板	Crimping cylinder mounting plate	1
28	140801079	送扣上下垫块	Feeding buckle upper and lower cushion blocks	1
29	4250400600	大压脚气缸连接器组件	Large presser foot cylinder coupler assembly	1
30	140808001	线性导轨 12×43	Linear guide rail 12 × 43	1
31	S05094	内六角螺钉 M3×8	Screw M3 × 8	2
32	140801080	送扣上下滑块座	Upper and lower slider seats for buckle feeding	1
33	421S13060	内六角圆柱头螺钉 m3×12	Screw m3×12	4
34	140801081	送扣臂连接块	Connecting block of feeding arm	1
35	42328601	垫圈 5	Washer 5	2
36	140801082	送扣下限位板	Lower limit plate of buckle feeding	1
37	1408NS20003	止动螺栓 M5×20	Stop bolt M5×20	2
38	S05133	内六角圆柱头螺钉 M4×12	screw M4 × 12	2
39	140822003	限位块	Stop block	1
40	41328023	垫圈 4	Washer 4	2

3、 纽扣传送部件/ BUTTON TRANSFER COMPONENTS



序号	公司件号	名称	DESCRIPTION	用量
1	14080901000	送扣轨道组件	Feed rail assembly	1
2	S05119	内六角圆柱头螺钉 M4×20)	screw M4 × 20	2
3	207s11042	内六角平端紧定螺钉 M5×5	Screw M5×5	1
4	S05991	内六角圆柱头螺钉 M3×20	screw M3×20	4
5	140845018	气缸 MU10×10B	Cylinder mu10 × 10B	1
6	140801086	测扣连接板	Measuring buckle connecting plate	1
7	N01004	六角螺母 M5	Hex nut M5	1
8	421S13046	内六角圆柱头螺钉 M5×45	screw M5 × 45	1
9	421S13035	内六角螺钉 M4×8	Hexagon socket head screw M4×8	2
10	140801084	送扣上挡条	Send and buckle the retaining strip	1
11	140801085	上挡条固定座	Upper retaining strip fixing seat	1
12	421S13038	内六角圆柱头螺钉 M3×6	Screw M3×6	6
13	140808004	线性导轨 9×40	Linear guide9×40	1
14	417S30034	内六角圆柱头螺钉 M4×10	Screw M4×10	1
15	140801100	轨道气缸连接板	Rail cylinder connecting plate	1
16	S05052	内六角圆柱头螺钉 M3×10	screw M3×10	1
17	140801024	送扣座(小)	Buckle feeding seat (small)	1
18	403S13009	电机安装螺钉组件 M5×25	Screw assembly M5×25	2
19	140845017	气缸 MU10×15	Cylinder mu10 × fifteen	2
20	41845232	T形接管 KJT04	throttle valve	2
21	140836001	L型气管接头	L-type air pipe connector	2
22	140836003	全金属微型管接头	Micro air pipe connector	2
22	41845231	接头 ASL4-M5	Speed governing connector ASL4-M5	1

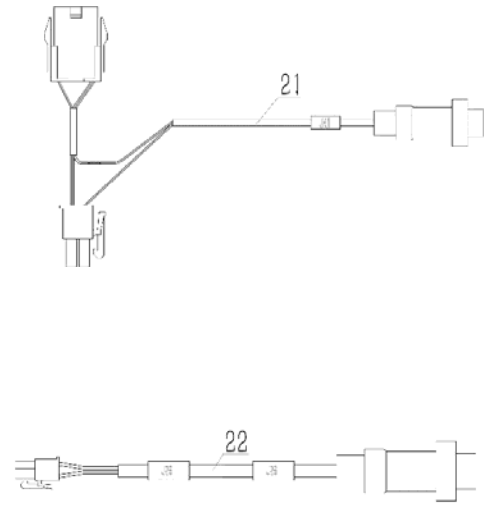
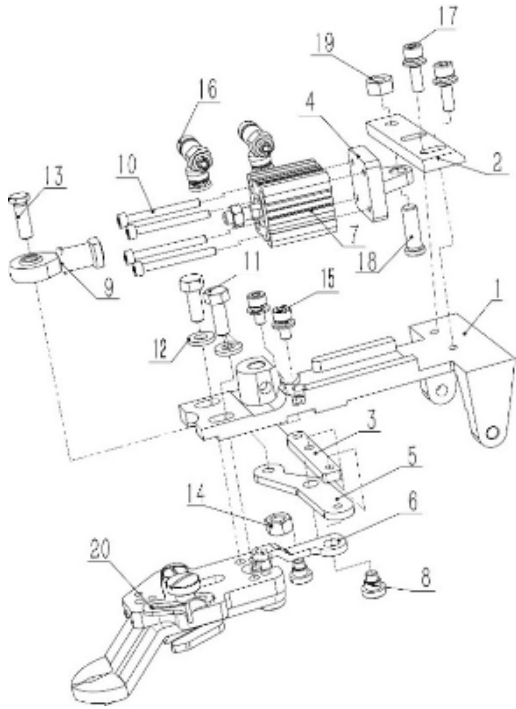
4、 电控柜及振动盘部件/ Electric control cabinet and vibration panel COMPONENTS



序号	公司件号	名称	DESCRIPTION	用量
1	930000843	安装底板	Install the base plate	1
2	1408NS30005	内六角沉头螺钉 M8×14	screw M8 × 14	4
3	140822004	橡胶减震垫	Rubber cushion	4
4	930000840	送扣装置罩组件	Buckle feeding device cover assembly	1
5	930000841	送扣装置罩前面板	Front panel of buckle feeding device cover	1
6	421S10022	十字半圆头螺钉 M4×5.5	Screw M4×5.5	5
7	41322012	橡胶塞	Rubber stopper	1
8	417S17852	内六角沉头螺钉 M5×16	Screw M5×16	4
9	421S13012	螺钉 M4×10(带垫)	Screw M4 × 10 (with cushion)	13
10	14080108700	送扣调节模组	Button feeding adjustment module	1
11	S05124	螺钉 M5×16(滚花)	Screw M5 × 16 (knurled)	7
12	140801088	送扣组件安装板	Mounting plate of buckle feeding assembly	1
13	140801089	送扣组件支撑板	Support plate of buckle feeding assembly	1
14	140830001	振动器	Vibrator	1
15	140812005	连接板	Connecting plate	4
16	N01011	螺母 M8	Nut M8	16
17	S05076	内六角螺钉 M8×40	Hexagon socket screw M8 × 40	4
18	930000844	振动盘	Vibrating plate	1
19	140812028	压扣板	Crimping plate	1
20	S17899	内六角圆头螺钉 M4×10	screw M4 × 10	2
21	140816018	限位板	Stop plate	1
22	40228002	止推垫圈	Thrust washer	1
23	1408NS30004	梅花手柄螺钉 M8×35	Torx handle screw M8 × thirty-five	1
24	140816033	限位板(小)	Stop plate (small)	1
25	417S30034	螺钉 M4×14(带垫)	Screw M4 × 14 (with cushion)	4
26		电控组件	Electronic control assembly	1
27	140812007	筛选板	Filter board	1
28	140812009	挡板	Baffle	1
29	140812006	阀板安装板	Valve plate mounting plate	1
30		电磁阀组件	Solenoid valve assembly	1
30-1	140845008	电磁阀	Solenoid valve	6
30-2	140345004	堵头 X-ABP01	Plug	2
30-3	141730021	连阀座 7V0500M6F	Valve seat	1
30-4	141845029	直接头 PC601	Tracheal joint	2
30-5	40728003	消声器 BSLM-01	Muffler	2
31	42122001	快换插头 KQ2P-04	Quick change plug	2
32	S05119	内六角圆柱头螺钉 M4×20	Screw M4×20	4
33	140812025	气源处理器安装板	Air source treatment mounting plate	1
34	403S30020	十字槽沉头自攻螺钉	Screws ST3. 8×20	2
35	40736018	螺纹直通 APC6-02	Thread straight apc6-02	1
36	141845004	气源处理元件 AW20-B	Air source processing element AW20-B	1
37	42130096	手动开关 VHK3	Manually switch VHK3	1

5、 钮钳部件（373GR）/ Electric control cabinet and vibration

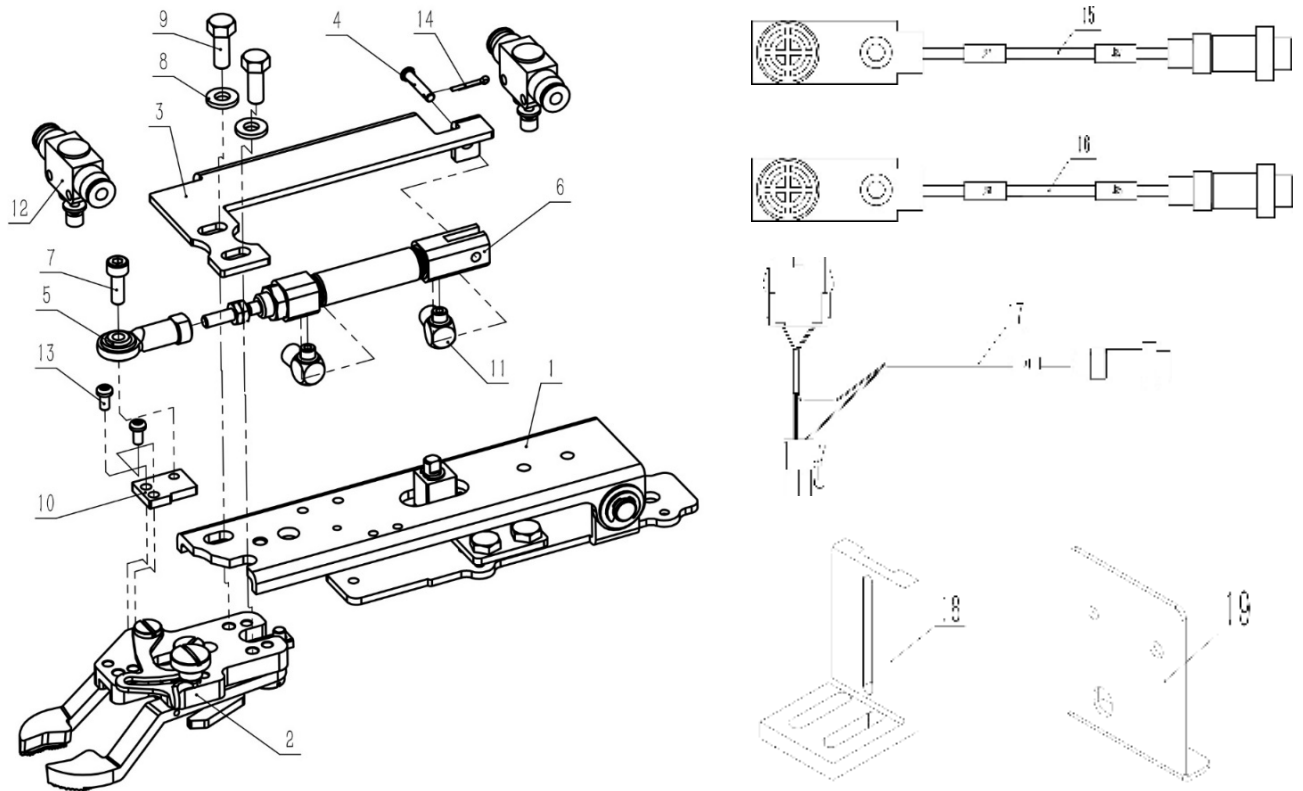
panel COMPONENTS（373GR）



序号	公司件号	名称	DESCRIPTION	用量
1	930000851	钮钳座	Toggle clamp holder	1
2	140801033	气缸安装板	Cylinder mounting plate	1
3	140812020	夹扣支撑板	Clamp support plate	1
4	140801032	气缸安装座	Cylinder mounting seat	1
5	140812021	连接杠杆	Connecting lever	1
6	140812022	钮钳连杆	Toggle clamp connecting rod	1
7	140845001	压扣气缸	Button pressure cylinder	1
8	1408NS30006	开槽圆柱头轴位螺钉	Slotted cylindrical head shaft screws	2
9	4030500500	连接曲柄	Connecting the crank	1
10	S05599	内六角圆柱头螺钉 M3×30	Hexagon socket cylindrical head screw M3×30	4
11	409S12001	六角头螺栓	Hexagon head bolt	2
12	40928001	垫圈	The gasket	2
13	L01002	六角头螺栓 M5×8	Hexagon head bolt M5×8	1
14	1421NS16002	六角螺母 M5	Hex nut M5	1
15	421S13035	螺钉 M4×8	Screw M4×8	2
15	W01001	垫圈	The gasket	2
16	41845231	接头 ASL4-M5	Speed governing connector ASL4-M5	2
17	417S30034	螺钉组件 M4×14	Screw assembly M4×14	2
18	141824014	轴位螺钉 M6	Axial screw M6	1
19	N01007	六角螺母 M6	Hexagon nut M6	1
20	14081603900	钮夹组件	Button clip component	1
21	195430032	脚踏保护信号线(外接)	Pedal protection signal cable (external)	1
22	195430029	送扣信号线组件(外接)	Buckle signal cable assembly (external)	1

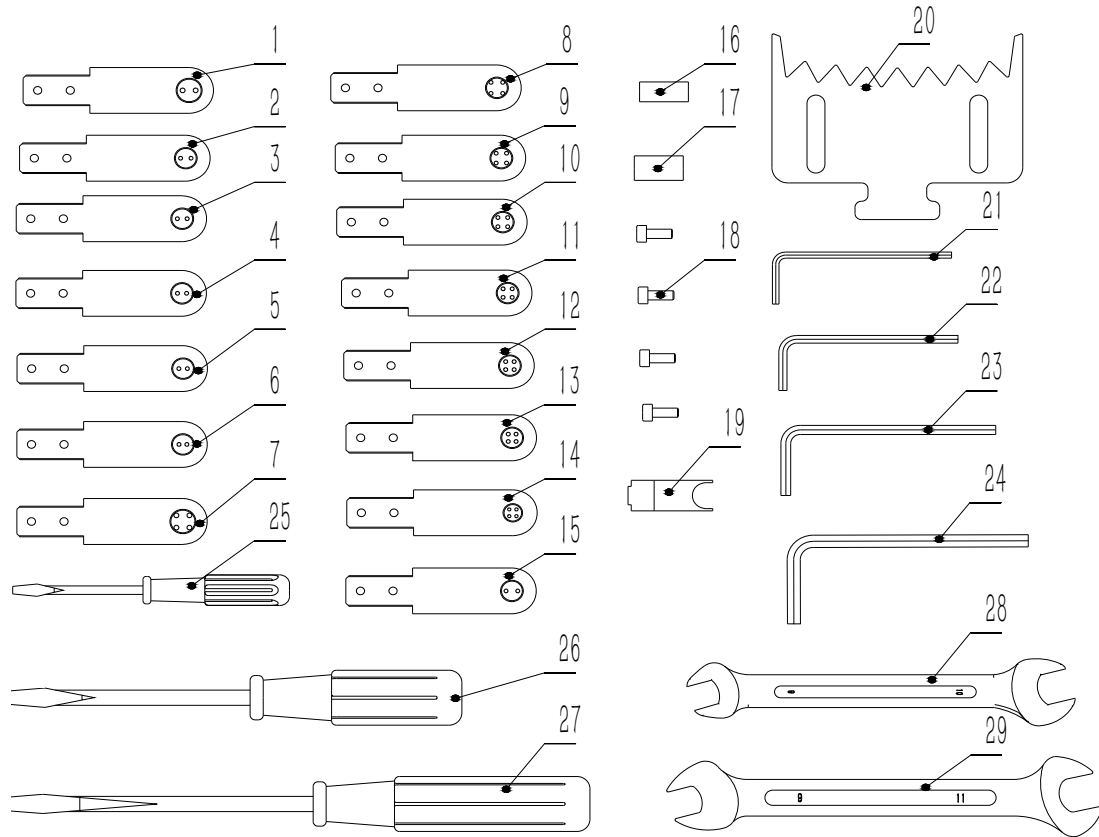
6、钮钳部件（1903GR） / Electric control cabinet and vibration

panel COMPONENTS（1903GR）



序号	公司件号	名称	DESCRIPTION	用量
1	4052800300	爪脚提升板组件	Claw foot lift plate assembly	1
2	14081601900	钮夹组件	Button clip component	1
3	140812024	气缸安装板	Cylinder mounting plate	1
4	140826004	支撑销	Support pin	1
5	140845004	鱼眼型气缸接头 M4	Fisheye cylinder connector M4	1
6	140845009	气缸	cylinder	1
7	S05133	内六角圆柱头螺钉 M4×12	Hexagon socket head screws M4x12	1
8	40928001	垫圈	The gasket	2
9	409S12001	六角头螺栓	Hexagon head bolt	2
10	140812023	气缸连接板	Cylinder connecting plate	1
11	42230519	微型接头 M-5HLH-4	Miniature connector M-5HLH-4	2
12	41845232	T形接管 KJT04	T-pipe KJT04	2
13	403S11020	十字槽圆柱头螺钉 M3×6	Screws M3×6	2
14	P05007	开口销 1.6×8	1.6×8 cotter pin	1
15	195430041	压脚信号线(外接)	Pressure pin signal cable (external)	1
16	195430034	剪线信号线(外接)	Cutting signal cable (external)	1
17	195430050	脚踏保护信号线(1903 外接)	Pedal protection signal line (1903 external connection)	1
18	140812027	传感器安装架 2(1903GR)	Sensor mounting bracket 2 (1903GR)	1
19	140812026	传感器安装架 1(1903GR)	Sensor mounting bracket 1 (1903GR)	1

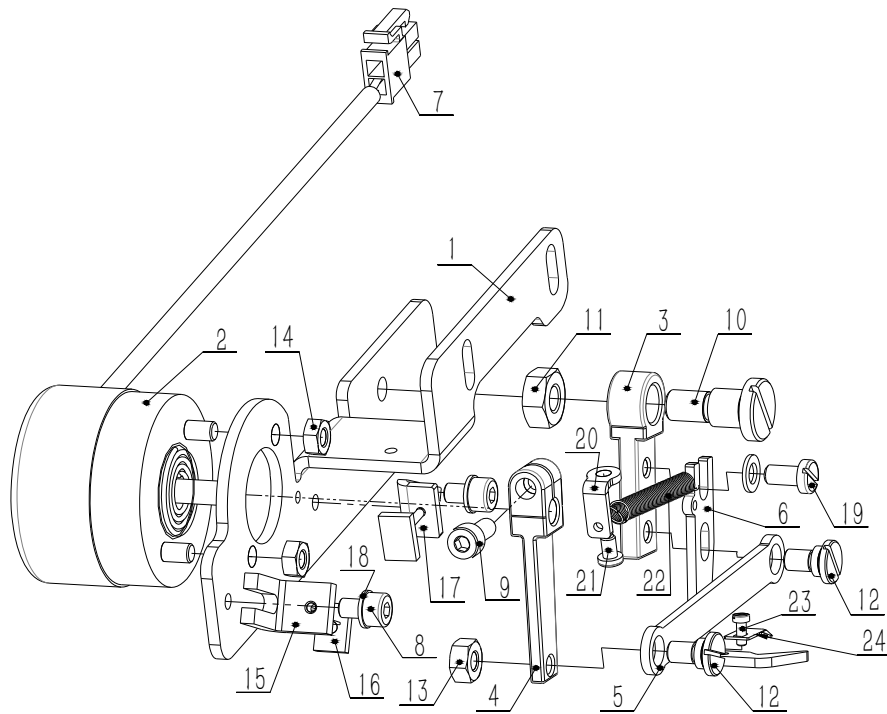
7、附件/ The attachment



序号	公司件号	名称	DESCRIPTION	数量
1	140816017	一体二眼送扣爪 1.5×4.0	One body two eyes delivery claw 1.5×4.0	1
2	140816019	一体二眼送扣爪 1.2×3.2	One body two eyes delivery claw 1.2×3.2	1
3	140816020	一体二眼送扣爪 1.2×3.0	One body two eyes delivery claw 1.2×3.0	1
4	140816021	一体二眼送扣爪 1.2×2.8	One body two eyes delivery claw 1.2×2.8	1
5	140816022	一体二眼送扣爪 1.2×2.6	One body two eyes delivery claw 1.2×2.6	1
6	140816023	一体二眼送扣爪 1.0×2.4	One body two eyes delivery claw 1.0×2.4	1
7	140816024	一体四眼送扣爪 1.5×4	One body four eyes delivery claw 1.5×4	1
8	140816025	一体四眼送扣爪 1.2×3.6	One body four eyes delivery claw 1.2×3.6	1
9	140816026	一体四眼送扣爪 1.2×3.2	One body four eyes delivery claw 1.2×3.2	1
10	140816027	一体四眼送扣爪 1.2×3.0	One-piece four-eye delivery claw 1.2×3.0	1
11	140816028	一体四眼送扣爪 1.2×2.8	One body four eyes delivery claw 1.2×2.8	1
12	140816029	一体四眼送扣爪 1.2×2.6	One body four eyes delivery claw 1.2×2.6	1
13	140816030	一体四眼送扣爪 1.0×2.4	One body four eyes delivery claw 1.0×2.4	1
14	140816031	一体四眼送扣爪 1×2.2	One body four eyes delivery claw 1×2.2	1
15	140816032	一体二眼送扣爪 1.2×3.6	One body two eyes delivery claw 1.2×3.6	1
16	140822001	压扣胶套(小)	Pressing rubber sleeve (small)	5
17	140822002	压扣胶套(大)	Buckle rubber sleeve (large)	5
18	S05052	内六角螺钉 M3×10	Hexagon socket screw M3×10	4
19	140801029	送扣座	To clinch	1
20	140812029	筛选板(大)	Screening plate (large)	1
21	20131046	内六角扳手 2mm	Inner hexagon wrench 2mm	1

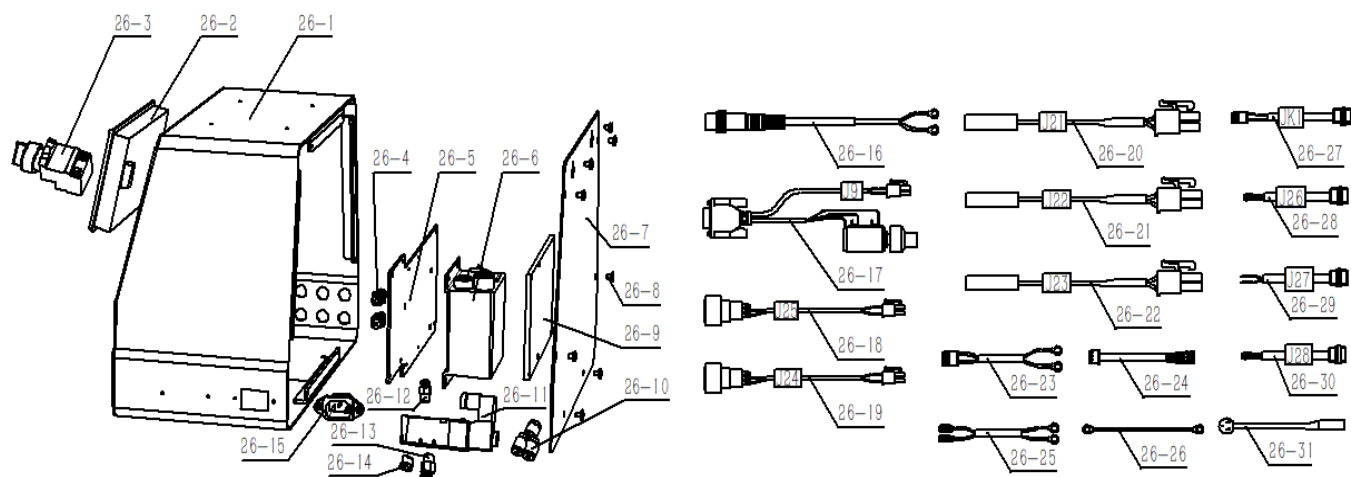
22	30131010	内六角扳手 2.5mm	Inner hexagon wrench 2.5mm	1
23	30131012	内六角扳手 3mm	Inner hexagon wrench 3mm	1
24	20131047	内六角扳手 4mm	Inner hexagon wrench 4mm	1
25	10131004	螺丝刀(小)	Screwdriver (small)	1
26	10131003	螺丝刀(中)	Screwdriver (middle)	1
27	10131002	螺丝刀(大)	Screwdriver (large)	1
28	30131006	双开口扳手(8-10mm)	Double open end wrench (8-10mm)	1
29	40931025	扳手(9mm-11mm)	Wrench (9 mm to 11 mm)	1

8、扫线器（14093001100）/ Wire sweeper（14093001100）



序号	公司件号	名称	DESCRIPTION	数量
1	14093001100-01	扫线安装板	Sweep the cable mounting plate	1
2	14093001100-02	电磁铁	electromagnet	1
3	14093001100-03	摆臂	Swing arm	1
4	14093001100-04	转动臂	Rotate the arm	1
5	14093001100-05	连杆	Connecting rod	1
6	14093001100-06	扫线板	Sweep line board	1
7	14093001100-12	二芯插头	Two core plug	1
8	S05115	内六角圆柱头螺钉 M4×6	Hexagon socket Head Screws M4×6	2
9	S05058	内六角圆柱头螺钉 M4×10	Hexagon socket Head Screws M4×10	1
10	409S20014	开槽圆柱头轴位螺钉	Slotted cylindrical head shaft screws	1
11	409S16008	六角螺母 SM1/4×24	Hexagonal nut SM1/4×24	1
12	14093001100-07	开槽轴位螺钉	Slotted shaft screws	2
13	409S16018	六角螺母 SM11/64×40	Hexagonal nut SM11/64×40	1
14	N01110	六角螺母 M4	Hexagon nut M4	2
15	14233001500-05	限位块	Limit block	1
16	14233001500-06	缓冲橡胶	Buffer rubber	2
17	14093001100-11	右限位支架	Right limit bracket	1
18	41328023	垫圈	The gasket	3
19	S01068	开槽圆柱头螺钉 M4×8	Slotted cylindrical head screws M4×8	1
20	14093001100-08	拉簧座	Tension spring seat	1
21	1211NS13002	螺钉 M3×4.5	screws M3×4.5	1
22	14093001100-10	拉簧	Tension spring	1
23	S01197	开槽圆柱头螺钉 M2×5	Slotted cylindrical head screw M2×5	1
24	14093001100-09	勾线板	Cancel the plate	1

4-26. 电控组件/ Electronic control assembly



序号	公司件号	名称	DESCRIPTION	用量
26-1	93000837	电控柜外壳组件	Electric control cabinet shell components	1
26-2	195430026	屏幕	screen	1
26-3	195444031	电源开关	power switch	1
26-4	195445001	隔板直通对插 4-4	Bulkhead straight plug-in 4-4	2
26-5	140812016	电控柜电路板固定板	Electric control cabinet circuit board fixing plate	1
26-6	140830002	振动送料控制器	Vibration feeding controller	1
26-7	93000838	电控柜后盖板	Rear cover plate of electric control cabinet	1
26-8	421S10022	十字半圆头螺钉	Cross half round head screw	8
26-9	195400096	电路板	Circuit board	1
26-10	140736004	气管接头	Tracheal joint	2
26-11	41845212	电磁阀	Solenoid valve	1
26-12	41845222	螺纹直通 APC4-01	Thread straight APC4-01	2
26-13	141845029	直接头 PC601	Direct head PC601	1
26-14	40728003	消音器 BSLM-01	Silencer BSLM-01	2
26-15	195430043	品字插座	Pinzi socket	1
26-16	195400103	振动盘驱动器电源线	Vibration disk driver power cord	1
26-17	195430035	振动盘驱动器控制线	Vibration disk driver control line	1
26-18	195430037	补扣按键连接线	Supplementary button connection line	1
26-19	195430036	复位按键连接线	Reset button connection line	1
26-20	195430058	传感器连接线-1 (J21)	Sensor Connection Wire-1	1
26-21	195430059	传感器连接线-2 (J22)	Sensor Connection Wire-2	1
26-22	195430060	传感器连接线-3 (J23)	Sensor Connection Wire-3	1
26-23	195430038	电路板电源线	Circuit board power cord	1
26-24	195430052	串口屏连接线	Serial screen connection cable	1
26-25	195400105	PE 线	PE line	1
26-26	199300442	外接导线	External conductor	1
26-27	195430031	脚踏保护信号线(内接)	Foot protection signal wire (internal connection)	1
26-28	195430028	送扣信号线组件(内接)	Buckle signal wire assembly (internal connection)	1
26-29	195430040	压脚信号线(内接)	Presser foot signal line (internal connection)	1
26-30	195430033	剪线信号线(内接)	Cut signal wire (internal connection)	1
26-31	195430044	电源线	power cord	1