



JK-53Z/63Z/93Z

产品使用说明书及产品零件图册

Manual = 30% & Parts = 30%

JACK 杰克

二、技术规格及用途

II. Main Technical Specifications and Application

名 称 Description		曲 形 缝 Curved-stitching	双 针 曲 形 缝 Double Curved-stitching
最高 缝速 Max. Speed	直 形 缝		2000针/分 2000 stitches/min
	曲 形 缝 Curvilinear	横针距 1~5毫米 Horizontal needle distance 1~5mm	1700针/分 1700 stitches/min
		横针距 5~12毫米 Horizontal needle distance 5~12mm	1200针/分 1200 stitches/min
最大线迹长度 Max. Length of stitches	直形线迹 Linear		5毫米 5mm
	曲形线迹 Curvilinear	左针位 Left-needle Position	12毫米 12mm
		中针位 Central-needle Position	
右针位 Right-needle Position		6毫米(指单针摆动宽度) 6mm(Swaying width of Single needle)	
双 针 间 距 Distance. Between double stitches		—	2.5, 3.5, 4.5 (可换) 2.5, 3.5, 4.5(Changeable)
压脚提升高度 Height of Presser foot	手 提 Hand stitch		不低于6毫米 no less than 6mm
	膝 提 Kneeing stitch		不低于12毫米 12mm
最大缝纫厚度 Max. Thickness of sewing		不少于8层纱布 No less than 8 layers	
机 针 规 格 Specification of needle		DPX5 (Nm700~130)	
缝 线 Thread		No. 40-100涤 棉线或类似丝线 No. 40~100 terylene and the like	
机头体积(长×宽×高) Dimension of machine head(L×W×H)		450 × 180 × 320毫米 450 × 180 × 320mm	
电 动 机 功 率 Motor Power		0.37千瓦 0.37KW	
用 途 Application		粗缝、拼缝、套结缝、 装饰缝及一般Z字形缝 For rough stitching, piece-together stitching, Loop stitching, Z-Shape stitching and decorating stitching	双针条状及曲折装 饰缝 For double stitching and curved-stitches decorations

三、机器安装和操作准备



此图展示了零件的侧视图，标注了25mm、1和2的几何特征。



此图展示了零件的侧视图，标注了1、2和3的几何特征。



此图展示了零件的侧视图，标注了60mm、170mm、1、2、3和4的几何特征。



此图对比了正确的（1、2、3）和错误的（4、5、12）安装方法。

1. **Introduction**

The purpose of this report is to provide a detailed analysis of the current market conditions and to identify the key factors influencing the industry. The report is structured as follows: Section 2 discusses the market overview, Section 3 provides a detailed analysis of the market segments, and Section 4 concludes with recommendations for future actions.

The report is intended for the management and stakeholders of the organization. It provides a comprehensive overview of the market and identifies the key factors influencing the industry.

2. **Market Overview**

The market is characterized by a high level of competition and a strong focus on innovation.

The market is characterized by a high level of competition and a strong focus on innovation. The industry is currently experiencing a period of rapid growth, driven by technological advancements and increasing demand for new products and services.

The market is characterized by a high level of competition and a strong focus on innovation. The industry is currently experiencing a period of rapid growth, driven by technological advancements and increasing demand for new products and services. The market is highly dynamic and is expected to continue to grow in the coming years.

3. **Market Segments**

3.1 **Segment A**

This segment represents a significant portion of the market and is characterized by a high level of competition. The market is currently experiencing a period of rapid growth, driven by technological advancements and increasing demand for new products and services.

This segment represents a significant portion of the market and is characterized by a high level of competition. The market is currently experiencing a period of rapid growth, driven by technological advancements and increasing demand for new products and services. The market is highly dynamic and is expected to continue to grow in the coming years.

3.2 **Segment B**

This segment represents a significant portion of the market and is characterized by a high level of competition.

This segment represents a significant portion of the market and is characterized by a high level of competition. The market is currently experiencing a period of rapid growth, driven by technological advancements and increasing demand for new products and services.

This segment represents a significant portion of the market and is characterized by a high level of competition. The market is currently experiencing a period of rapid growth, driven by technological advancements and increasing demand for new products and services. The market is highly dynamic and is expected to continue to grow in the coming years.

3.3 **Segment C**

This segment represents a significant portion of the market and is characterized by a high level of competition.

This segment represents a significant portion of the market and is characterized by a high level of competition. The market is currently experiencing a period of rapid growth, driven by technological advancements and increasing demand for new products and services.

3.4 **Segment D**

This segment represents a significant portion of the market and is characterized by a high level of competition. The market is currently experiencing a period of rapid growth, driven by technological advancements and increasing demand for new products and services.

4. **Conclusion**

1. The word "and" is used to

1) connect two clauses

When using the word "and" to connect two clauses, the clauses must be of equal rank. This means that both clauses must be able to stand alone as complete sentences. For example, "The sun is shining and the birds are singing" is a correct use of "and" because both "The sun is shining" and "the birds are singing" can stand alone as complete sentences. However, "The sun is shining and because the birds are singing" is incorrect because the second clause is a dependent clause and cannot stand alone.

2) list items

"And" is also used to list items of equal rank. For example, "The sun is shining and the birds are singing" lists two items of equal rank. However, "The sun is shining and because the birds are singing" is incorrect because the second item is a dependent clause and cannot stand alone. Another example is "I went to the store and bought some milk and bread." Here, "I went to the store" and "bought some milk and bread" are both actions performed by the same subject, and "and" is used to connect them.

3) show contrast

"And" can also be used to show contrast between two clauses. For example, "The sun is shining and it is raining" shows a contrast between the two clauses. However, "The sun is shining and because it is raining" is incorrect because the second clause is a dependent clause and cannot stand alone.

When using "and" to show contrast, the clauses must be of equal rank. For example, "The sun is shining and it is raining" is correct because both clauses can stand alone as complete sentences. However, "The sun is shining and because it is raining" is incorrect because the second clause is a dependent clause and cannot stand alone.

4) show a sequence of events

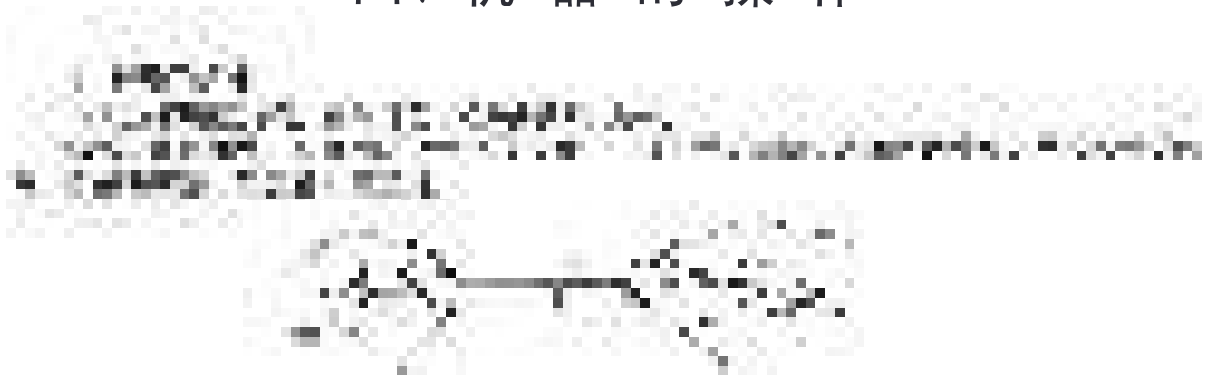
5) show a result

"And" is also used to show a sequence of events. For example, "The sun is shining and the birds are singing" shows a sequence of events. However, "The sun is shining and because the birds are singing" is incorrect because the second clause is a dependent clause and cannot stand alone. Another example is "I went to the store and bought some milk and bread." Here, "I went to the store" and "bought some milk and bread" are both actions performed by the same subject, and "and" is used to connect them.



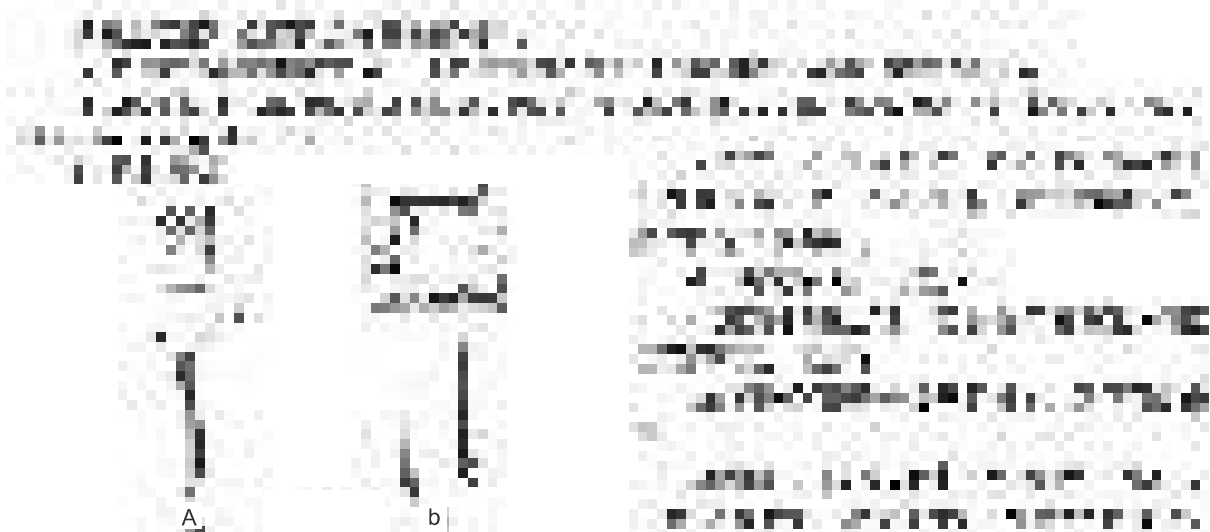
FIGURE 1

四、机器的操作



图六 Figure 6

机针号码 Needle Number	缝线的种类及号码 Number, Kind of thread			缝料种类 Kind of material
	棉线 Cotton	丝线 Silk	尼龙 Nylon	
DPX5				
65~75(9#~11#)	80~150	240~30	3~56	乔其纱、薄麻布、手帕、绸缎绣花 Georgette, gunny, napkin, embroidered-Satin
75~90(11#~14#)	60~80			服装卡其、薄呢绒、绣字、绣花 Khaki, woolen fabric embroidery
90~100(14#~16#)	40~60	16~18		绒布、全毛哔叽呢、绸缎上绣花、手套上绣花 Cotton flannel, woolen serge, embroidered satin and gloves
100~130(16#~22#)	30~40	21~60	10~40	人造革、鞋、帽、拎包、皮件上绣花 Artificial leather, shoes and hats, suit-case embroidered leather-biece



图七 Figure 7

1. 首先，我们来看一下这个图形的整体结构。它由若干个小的几何形状组成，这些形状通过特定的排列方式组合成了一个更大的、复杂的图案。

2. 在图形的顶部，我们可以看到一些明显的特征，这些特征可能是整个图形设计的关键元素。

3. 接下来，我们将注意力集中在图形的中部区域。这里包含了一些较为复杂的子结构，它们相互交织，形成了丰富的视觉层次。

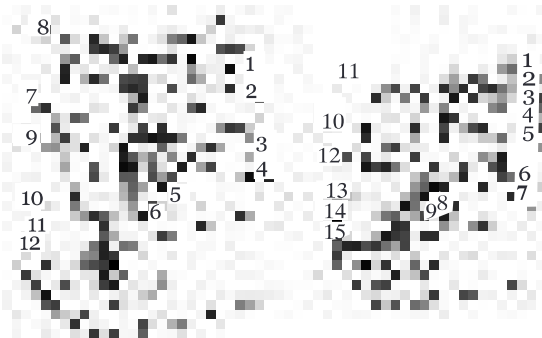
4. 在图形的底部，我们可以看到一些较为简单的几何元素，这些元素可能是整个图形设计的基础。

5. 通过对图形的详细观察，我们可以发现其中隐藏着一些有趣的规律和对称性。

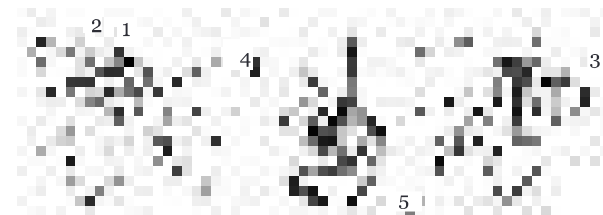
6. 最后，我们将总结一下这个图形的特点，并探讨它在设计中的应用。



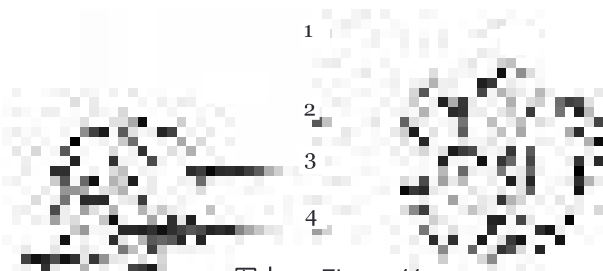
图八 Figure 8



图九 Figure 9



图十 Figure 10



图十一 Figure 11

在 1990 年，美國政府宣佈將向中國提供 10 億美元的貸款，以支持其經濟改革。這項貸款是美國政府對中國改革開放政策的支持，也是美國政府對中國經濟發展的信心。

這項貸款的提供，不僅是美國政府對中國改革開放政策的支持，也是美國政府對中國經濟發展的信心。這項貸款的提供，不僅是美國政府對中國改革開放政策的支持，也是美國政府對中國經濟發展的信心。

三、評估與批判

這項貸款的提供，不僅是美國政府對中國改革開放政策的支持，也是美國政府對中國經濟發展的信心。這項貸款的提供，不僅是美國政府對中國改革開放政策的支持，也是美國政府對中國經濟發展的信心。

這項貸款的提供，不僅是美國政府對中國改革開放政策的支持，也是美國政府對中國經濟發展的信心。這項貸款的提供，不僅是美國政府對中國改革開放政策的支持，也是美國政府對中國經濟發展的信心。

1. 經濟發展與改革開放

1978

2. 對外開放與國際化

1980 年代

3. 經濟改革與國際化

1990 年代

2000 年代

這項貸款的提供，不僅是美國政府對中國改革開放政策的支持，也是美國政府對中國經濟發展的信心。這項貸款的提供，不僅是美國政府對中國改革開放政策的支持，也是美國政府對中國經濟發展的信心。

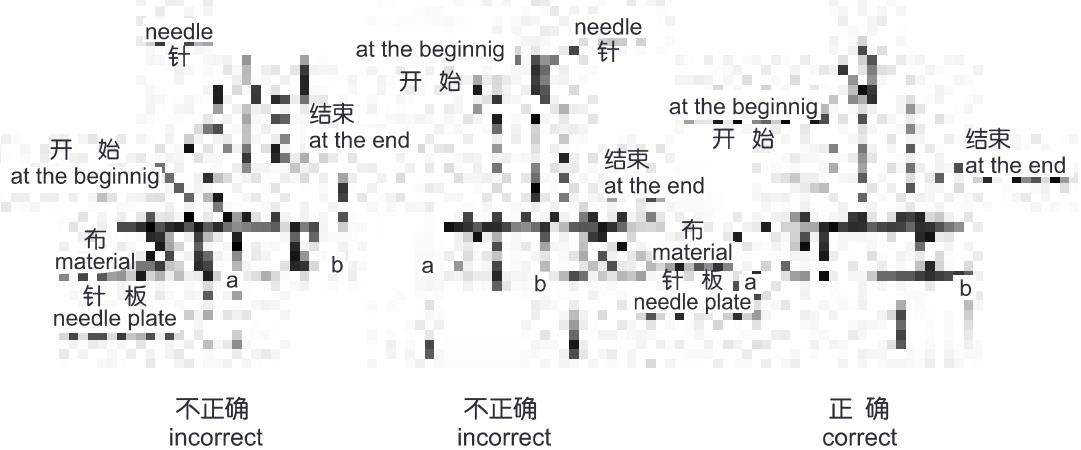


V. TENSION OF STITCHES

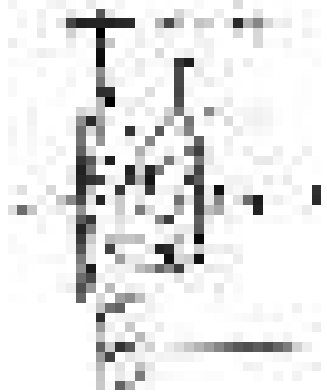
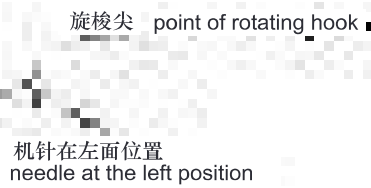
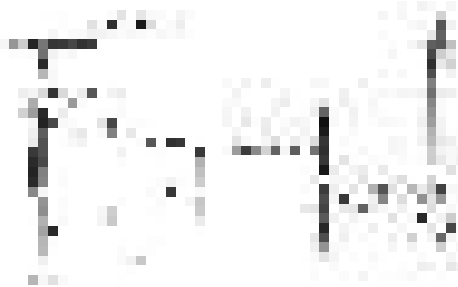
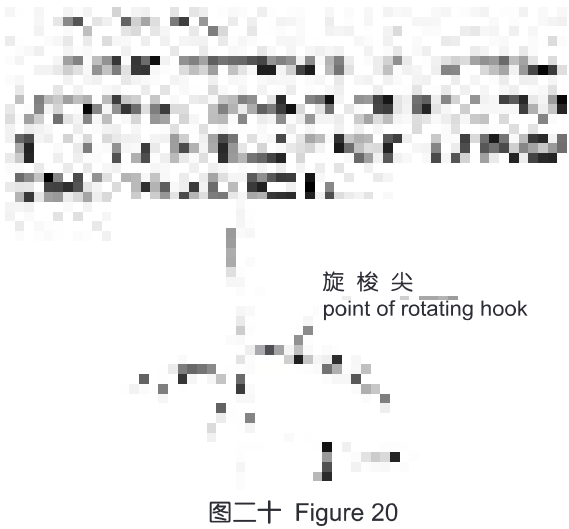
Text describing the importance of stitch tension in sewing, including factors like needle size, thread weight, and fabric type. The text is partially obscured by a heavy noise filter.

六、机器的定位与调整

Text describing the correct positioning and adjustment of the sewing machine, including instructions for needle placement and foot alignment. The text is partially obscured by a heavy noise filter.



图十九 Figure 19



图二十一 Figure 21

图二十二 Figure 22

图二十三 Figure 23

VI. LOCATION AND REGULATION OF THE MACHINE

The text in this section is extremely low quality and mostly illegible. It appears to be a technical manual or a set of instructions regarding the location and regulation of the machine. The text is arranged in several paragraphs, but the individual words and sentences cannot be discerned due to the poor scan quality.

1. The first step in the process of identifying a problem is to define the problem. This involves identifying the symptoms of the problem and determining the scope of the problem. It is important to identify the symptoms of the problem and determine the scope of the problem.

2. The second step in the process of identifying a problem is to identify the causes of the problem. This involves identifying the factors that are contributing to the problem and determining the underlying causes of the problem.

3. The third step in the process of identifying a problem is to identify the consequences of the problem. This involves identifying the potential impacts of the problem and determining the consequences of the problem.

4. The fourth step in the process of identifying a problem is to identify the stakeholders involved in the problem. This involves identifying the individuals or groups who are affected by the problem and determining their interests in the problem.

5. The fifth step in the process of identifying a problem is to identify the resources available to address the problem. This involves identifying the assets, skills, and knowledge that are available to address the problem.

6. The sixth step in the process of identifying a problem is to identify the constraints on the problem. This involves identifying the factors that are limiting the ability to address the problem and determining the constraints on the problem.

7. The seventh step in the process of identifying a problem is to identify the options for addressing the problem. This involves identifying the different ways in which the problem can be addressed and determining the options for addressing the problem.

8. The eighth step in the process of identifying a problem is to identify the risks associated with the problem. This involves identifying the potential negative impacts of the problem and determining the risks associated with the problem.

9. The ninth step in the process of identifying a problem is to identify the opportunities associated with the problem. This involves identifying the potential positive impacts of the problem and determining the opportunities associated with the problem.

10. The tenth step in the process of identifying a problem is to identify the actions that need to be taken to address the problem. This involves identifying the specific steps that need to be taken to address the problem and determining the actions that need to be taken.

11. The eleventh step in the process of identifying a problem is to identify the metrics that will be used to measure the success of the problem-solving process. This involves identifying the key performance indicators that will be used to measure the success of the problem-solving process.

12. The twelfth step in the process of identifying a problem is to identify the timeline for addressing the problem. This involves identifying the time frame within which the problem needs to be addressed and determining the timeline for addressing the problem.

13. The thirteenth step in the process of identifying a problem is to identify the communication plan for addressing the problem. This involves identifying the ways in which the problem-solving process will be communicated and determining the communication plan for addressing the problem.

14. The fourteenth step in the process of identifying a problem is to identify the roles and responsibilities for addressing the problem. This involves identifying the individuals or groups who will be responsible for addressing the problem and determining the roles and responsibilities for addressing the problem.

15. The fifteenth step in the process of identifying a problem is to identify the resources that will be needed to address the problem. This involves identifying the assets, skills, and knowledge that will be needed to address the problem and determining the resources that will be needed.

16. The sixteenth step in the process of identifying a problem is to identify the risks associated with the problem-solving process. This involves identifying the potential negative impacts of the problem-solving process and determining the risks associated with the problem-solving process.

七、一般故障及其处理方法

VII. FAULTS LOCATING AND HOW TO TREAT

故障类型 Type	产 品 原 因 Cause of Fault	处 理 方 法 How to treat
断 针 Needle is broken	1、机针太细或机针弯曲 2、机针装法错误 3、缝纫时用手推拉缝料 4、缝料过于紧固 1、needle is too fine or bent 2、installation of needle not correct 3、to pull-push manually during sewing 4、material too solid or too thick	调换机针 参看图七 稍许加以扶持，不可推位 请按技术规格规定使用 replace the needle see Figure 7. Slightly adjust, don't pull-push manually material selected in line with specification
跳 针 Skipping	1、机针弯曲或者机针粗细和缝料厚薄不相称 2、机针装法错误 1、needle is bent or it's thickness is not matched with the material 2、installation of needle not correct	调换机针 参看图七 replace the needle see Figure 7.
断面线 Needle thread broken	1、穿线错误 2、面线太紧 3、线的质量差 4、机针太细，面线太粗 1、threading is incorrect 2、needle thread too tight 3、poor quality of thread 4、needle too fine or needle thread too rough	参看图九 参看图十八减少面线张力 调换缝线 调换机针 see Figure 9 tension of needle thread should be reduced (see Figure 18) replace the thread replace the needle
断底线 Bobbin thread broken	1、底线太紧 2、梭心绕线松乱，不匀 3、针板孔毛糙或磨损 1、The needle thread too tight 2、the thread-winding looes or uneven 3、hole of needle plate rough or worn out	减少底线张力 重新绕线 更换针板或用“O”砂布砂光 tension of bobbin thread reduced re-winding the thread replace needle plate or to smooth the hole with emery cloth
针迹松浮 Stitches are loosened	1、底面线没有调好 2、挑线簧过松 1、Thension of bobbin thread and needle thread not well-adjusted 2、Thread take-up spring too loosened	调整底、面线参考图十八调节挑线簧张力 bobbin thread and needle thread should be well adjusted (see Figure 18) to adjust the tension of stitch-spring
缝料起皱 Material gets Creased	1、缝料过薄而针距太长 2、底、面线张力过紧 3、压脚压力过强 1、material too thin and needle distance too big 2、Tension of bobbin thread and needle thread too high 3、pressure of presser foot too high	适当调整 调节夹线螺母，挑线簧和梭皮螺钉 放松调压螺钉，减轻压脚的压力 well-adjusted Thread-holding nut, Thread take-up spring and screw should be regulated release pressure-adjusting screw and reduce the pressure of presser foot

八、正誤語法規則的作用

1. 目的

正誤語法規則的作用在於指出語言中不合語法的地方，並說明不合語法的原因，使讀者能了解其錯誤所在。

正誤語法規則的作用在於指出語言中不合語法的地方，並說明不合語法的原因，使讀者能了解其錯誤所在。



2. 說明

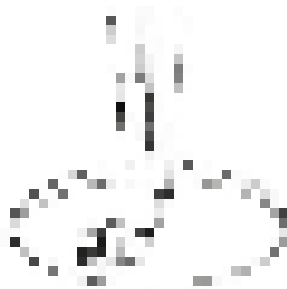
正誤語法規則的作用

正誤語法規則的作用在於指出語言中不合語法的地方，並說明不合語法的原因，使讀者能了解其錯誤所在。

正誤語法規則的作用在於指出語言中不合語法的地方，並說明不合語法的原因，使讀者能了解其錯誤所在。

正誤語法規則的作用在於指出語言中不合語法的地方，並說明不合語法的原因，使讀者能了解其錯誤所在。

正誤語法規則的作用在於指出語言中不合語法的地方，並說明不合語法的原因，使讀者能了解其錯誤所在。



3. 說明

正誤語法規則的作用在於指出語言中不合語法的地方，並說明不合語法的原因，使讀者能了解其錯誤所在。

4. 說明

正誤語法規則的作用在於指出語言中不合語法的地方，並說明不合語法的原因，使讀者能了解其錯誤所在。

5. 說明

正誤語法規則的作用在於指出語言中不合語法的地方，並說明不合語法的原因，使讀者能了解其錯誤所在。

6. 說明

正誤語法規則的作用在於指出語言中不合語法的地方，並說明不合語法的原因，使讀者能了解其錯誤所在。

RESEARCH AND EVALUATION OF ACADEMIC

1. Introduction

The purpose of this research is to evaluate the effectiveness of a new educational program designed to improve student learning outcomes. The study focuses on the impact of the program on student performance, engagement, and retention rates.

The research is conducted in a controlled environment, comparing the performance of students who participated in the program (the experimental group) with those who did not (the control group). The study is a quantitative research design, using standardized tests and surveys to measure learning outcomes and student engagement.

2. Methodology

2.1. Research Design

The research design is a quasi-experimental design, involving two groups of students: the experimental group and the control group. The experimental group receives the new educational program, while the control group receives the traditional curriculum. The study is conducted over a period of 12 weeks.

The data is collected through standardized tests and surveys, which are administered to both groups at the beginning and end of the study. The results are analyzed using statistical methods to determine the significance of the differences between the two groups.

The study is a quantitative research design, using standardized tests and surveys to measure learning outcomes and student engagement. The data is analyzed using statistical methods to determine the significance of the differences between the two groups.

The study is a quantitative research design, using standardized tests and surveys to measure learning outcomes and student engagement. The data is analyzed using statistical methods to determine the significance of the differences between the two groups.

2.2. Data Collection

The data is collected through standardized tests and surveys, which are administered to both groups at the beginning and end of the study. The results are analyzed using statistical methods to determine the significance of the differences between the two groups.

2.3. Statistical Analysis

The data is analyzed using statistical methods to determine the significance of the differences between the two groups. The results are presented in tables and graphs, showing the mean scores and standard deviations for each group.

2.4. Results and Discussion

The results of the study show that the experimental group performed significantly better than the control group on the standardized tests. The students in the experimental group also reported higher levels of engagement and retention rates.

2.5. Conclusion

The study concludes that the new educational program is effective in improving student learning outcomes, engagement, and retention rates. The results suggest that the program should be implemented on a larger scale.

2.6. Limitations and Future Research

The study has several limitations, including the use of a quasi-experimental design and the lack of a random assignment process. Future research should address these limitations and explore the long-term effects of the program.



Figure 1

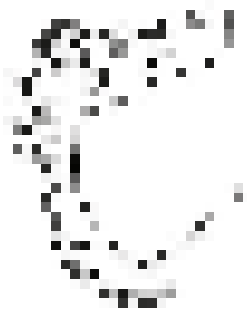


Figure 2



Figure 3

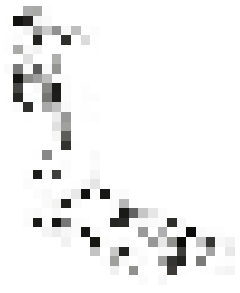


Figure 4



Figure 5



Figure 6

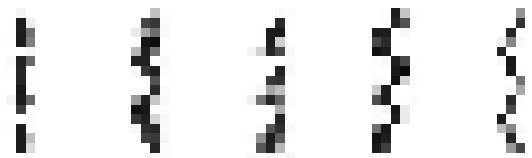
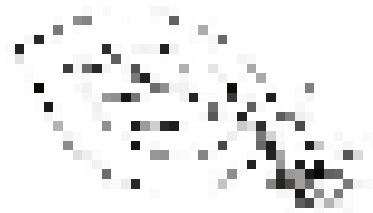


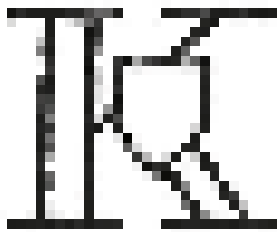
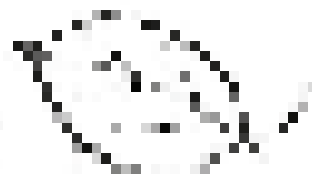
Figure 7



1.1



1.2



1.3



1.4



1.5

九、零件样本

IX. COMPONENT EXAMPLE

1、机壳部件 Components of housing

序号 Seri No.	图号 Code No.	名称 Description	适用产品 Products applicable			
			曲折缝 Curved- stitching	数量 Qty	双针曲折缝 Double Curved- stitching	数量 Qty
1	U43T1-0	机壳 Housing	√	1	√	1
2	U43T1-1-3	铭牌 Model-plate	√	1	√	
3	U43T1-1-7	铭牌铆钉 Model-plate rivet	√	2	√	2
4	U43T1-1-8	铭牌 Model-plate			√	1
5	U43T1-2-1	面板 Face plate	√	1	√	1
6	U43T1-2-3	面板线勾 Face plate thread guide	√	1	√	1
7	U43T1-2-2	面板线勾螺钉 thread guide screw	√	1	√	1
8	U43T1-2-3	面板线勾螺母 thread guide nut	√	2	√	2
9	U43T1-3	面板螺钉 Face Plate screw	√	2	√	2
10	U43T1-4	直缝锁紧偏心螺钉 Linear lock eccentric screw	√	1	√	1
11	U43T1-5	直缝锁紧偏心 Linear lock eccentric	√	1	√	1
12	U43T1-6-1	推板 Thrust plate	√	1	√	1
13	U43T1-6-2	推板簧 Thrust plate spring	√	1	√	1
14	U43T1-6-3	推板簧螺钉 Thrust plate spring screw	√	2	√	2
15	U43T1-7	针板 Needle plate	√	1	√	1
16	U43T1-8	针板螺钉 Needle plate screw	√	2	√	2
17	U43T1-9-1	针板内盖板 Inner cover plate	√	1	√	1
18	U43T1-9-2	针板内盖板簧 Cover plate spring	√	1	√	1
19	U43T1-9-3	针板内盖板螺钉 Cover plate spring Screw	√	2	√	2
20	U43T1-10	挑线杆防护罩 Thread take up lever shield	√	1	√	1
21	U43T1-11	挑线杆防护罩螺钉 Shield screw	√	1	√	1
22	U43T1-12	垫圈 Washer	√	1	√	1
23	U43T1-13	旋梭防护罩 Rotating hook shield	√	1	√	1
24	U43T1-14	旋梭护罩螺钉 Rotating hook shield screw	√	1		
25	U43T1-15	松线杠杆 Thread-releasing lever	√	1		
26	U43T1-16	松线杠杆扭簧 Thread-releasing lever spring	√	1		
27	U43T1-17	松线杠杆螺钉 Thread-releasing lever screw	√	1	√	1
28	U43T1-18	下过线钉 Lower thread-running pin	√	1		
29	U43T1-19	双过线架 Double thread-running rack	√	1	√	1
30	U43T1-20	双过线架螺钉 Thread-running rack screw	√	1	√	1
31	U43T1-21	松线钉 Thread-releasing pin	√	1	√	1
32	U43T1-22	夹线器紧定螺钉 Thread-hold fixing screw	√	1	√	1
33	U43T1-19a	双过线架 Thread-running rack		1		
34	U43T1-23-1	夹线器调节座 Thread Tension regulator bushing	√	1		1
35	U43T1-23-2	夹线器螺钉紧固螺钉 Fixing screw	√	1	√	
36	U43T1-23-3	挑线簧 Thread take-up spring	√	1		
37	U43T1-23-4	夹线螺钉 Thread tension stud	√	1		
38	U43T1-23-5	夹线板 Thread tension disc	√	2		
39	U43T1-23-6	松线板 Thread tension-releasing disc	√	1		
40	U43T1-23-7	夹线簧 Thread tension spring	√	1		
41	U43T1-23-8	夹线制动板 Thumb nut revolution stopper	√	1	√	1
42	U43T1-23-9	夹线螺母 Thumb nut	√	1	√	1

序号 Seri No.	图号 Code No.	名称 Description	适用产品 Products applicable			
			曲折缝 Curved- stitching	数量 Qty	双针曲折缝 Double Curved- stitching	数量 Qty
43	U43T1-24	上盖 Upper cover	√	1		
44	U43T1-25	上盖后螺钉 Upper cover back screw	√	1	√	1
45	U43T1-26	三眼线勾 3-eyelet hole thread guide	√	1	√	1
46	U43T1-27	三眼线勾螺钉 3-eyelet hole thread guide screw	√	1	√	1
47	U43T1-28	橡皮塞(大) Rubber plug(big)	√	1	√	1
48	U43T1-29	橡皮塞(中) Rubber plug(medinm)	√	1	√	1
49	U43T1-30	橡皮塞(小) Rubber plug(small)	√	1	√	1
50	U43T1-31	上盖定位螺钉 Upper cover set screw	√	2	√	2
51	U43T1-32	上盖夹线螺钉紧定螺钉 Fastening screw	√	1	√	1
52	U43T1-33-0	上盖夹线板组件 Upper thread-guide component	√	1	√	1
53	U43T1-33-1	双眼过线板 Thread-guide			√	1
54	U43T1-33-2	上夹线螺钉 Thread-tension stud			√	1
55	U43T1-33-3	上夹线板 Upper thread-tension disc	√	2	√	2
56	U43T1-33-4	上夹线簧 Upper thread-tension spring	√	1	√	1
57	U43T1-33-5	上夹级螺母 Nut	√	1	√	1
58	U43T1-34	后盖板 Back cover	√	4	√	4
59	U43T1-35	后盖板螺钉 Back cover screw	√	1	√	1
60	U43T1-37	绕线定位块紧定螺钉 locating block set screw	√	1	√	1
61	U43T1-37-1	绕线定位块 Locating block	√	1	√	1
62	U43T1-38	绕线量调节轴 Volume-adjusting spindle	√	1	√	1
63	U43T1-39	绕线量调节轴挡圈 Washer	√	1	√	1
64	U43T1-40	调节压板螺钉 Pressing plate screw	√	1	√	1
65	U43T1-41	绕线量调节压板 Volume-adjusting plate	√	1	√	1
66	U43T1-42	绕线摆杆拉簧 Extension spring pin	√	1	√	1
67	U43T1-43	拉簧销钉 Extension spring	√	1	√	1
68	U43T1-44	绕线曲柄螺钉 Crank screw	√	1	√	1
69	U43T1-45	绕线摆杆 Thread-winding swaying handle	√	1	√	1
70	U43T1-46	绕线摆杆压簧 Swaying handle presser spring	√	1	√	1
71	U43T1-47	绕线芯轴 Axis	√	1	√	1
72	U43T1-48	绕线小轮 Thread-winding small wheel	√	1	√	1
73	U43T1-49	绕线橡皮轮 Thread-winding rull wheel	√	1	√	1
74	U43T1-50	绕线轴簧 Thread-winding axis spring	√	1	√	1
75	U43T1-51	绕线曲柄 Thread-winding crank	√	1	√	1

Figure 1: The structure of the model



2、挑线刺料部件 Thread take-up and needle bar components

序号 Seri No.	图号 Code No.	名称 Description	适用产品 Products applicable			
			曲折缝 Curved- stitching	数量 Qty	双针曲折缝 Double Curved- stitching	数量 Qty
1	U43T2-2	针杆摆动销螺钉 Pin screw(swaying rack of needle staff)	✓	1	✓	1
2	U43T2-3	针杆摆动架 Swaying rack of needle bar	✓	1		
3	U43T2-4	针杆偏心肖螺钉 Eccentric pin screw of needle bar	✓	1	✓	1
4	U43T2-5	针杆定位片 Locating plate of needle bar	✓	1	✓	1
5	U43T2-6	针杆定位片螺钉 Screw of locating plate	✓	1	✓	1
6	U43T2-7	针杆摆动架销 Ping of swaying rack(needle bar)	✓	1	✓	1
7	U43T2-8	针杆 Needle bar	✓	1		
8	U43T2-9	针杆线勾 Thread-guide of needle bar	✓	1		
9	U43T2-10	机针 Needle	✓	1	✓	2
10	U43T2-11	机针紧定螺钉 Locking screw of needle	✓	1		
11	U43T2-12	针杆连接轴销螺钉 Pin-screw of connecting shaft	✓	1	✓	1
12	U43T2-13	针杆连接轴销垫圈 Pin-washer of connecting shaft	✓	1	✓	1
13	U43T2-14	针杆连接轴体 Connecting shaft	✓	1	✓	1
14	U43T2-15	针杆连接轴销 Pin of connecting shaft	✓	1	✓	1
15	U43T2-16	针杆连接轴销紧定螺钉 Pin-locking screw of connecting shaft	✓	1	✓	1
16	U43T2-17	小连杆导板 Guide of small connecting staff	✓	1	✓	1
17	U43T2-18	小连杆导板螺钉 Screw of guide	✓	2	✓	2
18	U43T2-19	小连杆导板垫圈 Guide washer	✓	2	✓	2
19	U43T2-20-0	挑线杆组件 Thread take-up lever component	✓	1	✓	1
20	U43T2-20-1	倒牙螺钉 Left-spiral screw	✓	1	✓	1
21	U43T2-20-2	小连杆 Small connecting staff	✓	1	✓	1
22	U43T2-20-3	针杆曲柄 Crank of needle bar	✓	1	✓	1
23	U43T2-20-5	挑线摇杆 Stitch-swaying staff	✓	1	✓	1
24	U43T2-20-6	挑线摇杆销 Pin of swaying staff	✓	1	✓	1
25	U43T2-20-7	挑线摇杆销螺钉 Pin screw of swaying staff	✓	1	✓	1
26	U43T2-20-8	挑线曲柄螺钉 Screw of crank	✓	1	✓	1
27	U43T2-20-9	挑线曲柄 Crank	✓	1	✓	1
28	U43T2-20-10	针杆曲柄紧固螺钉 Crank fastening screw	✓	1	✓	1
29	U43T2-20-11	挑线杆 Thread take-up lever	✓	1		
30	U43T2-21	上轴前轴套紧定螺钉 Fastening screw(of front sleeve)	✓	1	✓	1
31	U43T2-22	上轴前轴套 Front sleeve of upper shaft	✓	1	✓	1
32	U43T2-23	上轴螺旋齿轮螺钉 Screw of spiral gear	✓	2	✓	2
33	U43T2-24	上轴螺旋齿轮 Spiral gear of upper shaft	✓	1	✓	1
34	U43T2-25	上轴弧齿锥齿轮螺钉 Screw of arc-cone gear	✓	2	✓	2
35	U43T2-26	上轴弧齿锥齿轮 Arc-cone gear (upper shaft)	✓	1	✓	1
36	U43T2-27	送布凸轮螺钉 Screw of feed cam	✓	2	✓	2
37	U43T2-28	送布凸轮 Feed cam	✓	1	✓	1
38	U43T2-29	上轴 Upper shaft	✓	1	✓	1

序号 Seri No.	图号 Code No.	名称 Description	适用产品 Products applicable			
			曲折缝 Curved- stitching	数量 Qty	双针曲折缝 Double Curved- stitching	数量 Qty
40	U43T2-30	上轴后轴套 Back sleeve of upper shaft	√	1	√	1
41	U43T2-31	上轴后轴套螺钉 Fastening screw of back sleeve	√	1	√	1
42	U43T2-32	上轮套筒 Sleeve of balance wheel	√	1	√	1
43	U43T2-33	上轮套螺钉 Sleeve screw	√	1	√	1
44	U43T2-34	上轮 Balance wheel	√	1	√	1
45	U43T2-35	离合垫圈 Clutch waler	√	1	√	1
46	U43T2-36	离合螺钉 Clutch screw	√	1	√	1
47	U43T2-37	离合小螺钉 Small clutch screw	√	1	√	1
48	U43T2-39	针杆摆动架 Swaying rack of needle bar			√	1
49	U43T2-40	双针针杆 Needle har for double needle			√	1
50	U43T2-41	双针扎头紧固螺钉 Fastening screw of double needle clamper			√	1
51	U43T2-42	双针扎头 Double needle clamper (2.5mm)			√	1
52	U43T2-43	双针扎头 Double needle clamper (3.5mm)			√	1
53	U43T2-44	双针扎头 Double needle clamper (4.5mm)			√	1
54	U43T2-45	机针紧定螺钉 Fastening screw			√	2

2. **QUESTION 1** (Total marks = 100) (10 marks)



3、送料部件 Materiml-feeding components

序号 Seri No.	图号 Code No.	名称 Description	适用产品 Products applicable			
			曲折缝 Curved- stitching	数量 Qty	双针曲折缝 Double Curved- stitching	数量 Qty
1	U43T3-1	油毡 Oil felt	√	1	√	1
2	U43T3-2	拾牙连杆组件 Lift feed connecting bar	√	1	√	1
3	U43T3-4	小圆锥螺母 Small come nut	√	4	√	4
4	U43T3-5	针距座连杆 Connecting bar of needle distance base	√	1	√	1
5	U43T3-6	小圆锥螺钉 Small cone screw	√	4	√	4
6	U43T3-7	大顶尖螺钉 Pointed screw	√	4	√	4
7	U43T3-8	大顶尖螺母 Pointed nut	√	4	√	4
8	U43T3-9	送布曲柄 Feed crank	√	1	√	1
9	U43T3-10	送布曲柄螺钉 Feed crank screw	√	1	√	1
10	U43T3-11	送布牙螺钉 Feed crank screw	√	2	√	2
11	U43T3-12	送布牙 Feed dog	√	1	√	1
12	U43T3-13	小顶尖螺钉 Pointed screw of tooth rack	√	2	√	2
13	U43T3-14	小顶尖螺帽 Point nut	√	2	√	2
14	U43T3-15	送布轴 Feed rock	√	1	√	1
15	U43T3-16	牙架 Tooth rack	√	1	√	1
16	U43T3-17	拾牙轴组件 Feed lifting rock shatt component	√	1	√	1
17	U43T3-18	拾牙曲柄螺钉 Feed lifting rock crank screw	√	1	√	1
18	U43T3-19	拾牙曲柄 Feed lifting rock crank	√	1	√	1
19	U43T3-20	牙叉 Feed fork connecting rod	√	1	√	1

QUESTION 10



4、勾线部件 Thread-hooking Components

序号 Seri No.	图号 Code No.	名称 Description	适用产品 Products applicable			
			曲折缝 Curved- stitching	数量 Qty	双针曲折缝 Double Curved- stitching	数量 Qty
1	U43T4-1	旋梭定位板 Locating plate of rotating hook	√	1	√	1
2	U43T4-2	旋梭定位板螺钉 Screw of locating plate	√	1	√	1
3	U43T4-3	梭心套 Bobbin case	√	1	√	1
4	U43T4-4	梭心 Bobbin	√	1	√	1
5	U43T4-5	旋梭 Rotating hook	√	1	√	1
6	U43T4-6	旋梭轴前轴套 Front sleeve of rotating hook shaft	√	1	√	1
7	U43T4-7	旋梭轴前轴套螺钉 Front sleeve screw	√	1	√	1
8	U43T4-8	旋梭轴挡圈 Retainer of rotating hook shaft	√	2	√	2
9	U43T4-9	旋梭轴挡圈螺钉 Retainer screw	√	4	√	4
10	U43T4-10	旋梭轴后轴套 Back sleeve of rotating hook shaft	√	1	√	1
11	U43T4-11	旋梭轴后轴套螺钉 Screw of back sleeve	√	1	√	1
12	U43T4-12	旋梭轴 Rotating hook shaft	√	1	√	1
13	U43T4-13	旋梭轴弧齿锥齿轮螺钉 Screw of arc-cone gear	√	2	√	2
14	U43T4-14	旋梭轴弧齿锥齿轮 Arc-cone gear of rotating hool shaft		1		1
15	U43T4-15	下轴弧齿锥齿轮 Arc-cone gear of lower shaft	√	1	√	1
16	U43T4-16	下轴弧齿锥齿轮螺钉 Screw of Arc-cone gear	√	2	√	2
17	U43T4-17	下轴前后轴套螺钉 Screw	√	2	√	2
18	U43T4-18	下轴前轴套 Front sleeve of lower shaft	√	1	√	1
19	U43T4-19	下轴(立轴)挡圈 Lower shaft retainer	√	3	√	3
20	U43T4-20	下轴(立轴)挡圈螺钉 Retainer screw of lower shaft	√	6	√	6
21	U43T4-21	下轴后轴套 Back sleeve of lower shaft	√	1	√	1
22	U43T4-22	下轴 Lower shaft	√	1	√	1
23	U43T4-23	下轴差动齿轮螺钉 Screw of differential gear(lower shaft)		2		2
24	U43T4-24	下轴差动齿轮 Differential gear	√	1	√	1
25	U43T4-25	立轴差动齿轮螺钉 Screw of differential gear	√	2	√	2
26	U43T4-26	立轴差动齿轮 Differential gear(vertical shaft)	√	1	√	1
27	U43T4-27	立轴下轴套 Lower sleeve of vertical shaft	√	1	√	1
28	U43T4-28	差动滑套 Differential shaft sliding-sleeve	√	1	√	1
29	U43T4-29	下离合套筒 Lower clutch sleeve	√	1	√	1
30	U43T4-30	下离合套筒螺钉 Screw	√	2	√	2
31	U43T4-31	上离合套筒 Upper sleeve of vertical shaft	√	1	√	1
32	U43T4-32	上离合套筒螺钉 Screw	√	2	√	2
33	U43T4-33	立轴上轴套 Upper sleeve of vertical shaft	√	1	√	1
34	U43T4-34	立轴上轮套筒螺钉 Screw of upper sleeve	√	1	√	1
35	U43T4-35	立轴弧齿锥齿轮 Arc-cone gear	√	1	√	1
36	U43T4-36	大差动连杆 Differential connecting bar	√	1	√	1
37	U43T4-37	立轴 Vertical shaft	√	1	√	1

• 1920年代 經濟 發展 的 原因



5、摆针部件 Components of Swaying needle

序号 Seri No.	图号 Code No.	名称 Description	适用产品 Products applicable			
			曲折缝 Curved- stitching	数量 Qty	双针曲折缝 Double Curved- stitching	数量 Qty
1	U43T5-1	横针拨叉 Horizontal needle fork	√	1	√	1
2	U43T5-2	摆针轴 Shaft of swaying needle	√	1	√	1
3	U43T5-3	摆针轴螺钉 Screw	√	1	√	1
4	U43T5-4	摆针齿轮 Gear of swayinn needle	√	1	√	1
5	U43T5-5	偏心挡圈 Eccentric retainer	√	1	√	1
6	U43T5-6	摆针偏心凸轮连接螺钉 Connecting screw	√	2	√	2
7	U43T5-7	摆针偏心凸轮 Eccentric retainer	√	1	√	1
8	U43T5-8	摆针偏心凸轮后挡圈 Rack retainer	√	1	√	1
9	U43T5-9	摆针轴挡圈螺钉 Retainer screw	√	2	√	2
10	U43T5-10	摆轴轴挡圈 Retainer shaft	√	1	√	1
11	U43T5-11	摆针滑块连接螺钉 Connecting screw	√	1	√	1
12	U43T5-12	小左动连杆 Differential connecting bar	√	1	√	1
13	U43T5-13	针杆偏心销 Eccentric pin of needle bar	√	1	√	1
14	U43T5-14	摆针滑块 Sliding block of swaying needle	√	1	√	1
15	U43T5-15	摆针导块座 Guide base of swaying needle	√	1	√	1
16	U43T5-16	摆针导块座螺钉 Screw of guie base	√	1	√	1
17	U43T5-17	摆针调节连杆 Adjustable connecting bar	√	1	√	1
18	U43T5-18	差动连杆连接螺钉 Connecting screw of differential connecting bar	√	3	√	3
19	U43T5-19	摆针定位块 Locating block of swaying needle	√	1	√	1
20	U43T5-20	摆针定位块连接销 Connecting pin of guide	√	2	√	2
21	U43T5-21	摆针定位块调节螺钉 Adjusting screw of locating block	√	2	√	2
22	U43T5-22	摆针定位块紧定螺母 Fastening nut of locating crank	√	2	√	2
23	U43T5-23	摆针调节曲柄套螺钉 Screw for adjusting crank sleeve	√	1	√	1
24	U43T5-24	摆针调节曲柄弹簧 Spring for adjusting crank	√	1	√	1
25	U43T5-25	摆针调节曲柄组件 Adjusting crank component	√	1	√	1
26	U43T5-26	摆针扳手定位挡圈螺钉 Screw of spanner locating retainer	√	2	√	2
27	U43T5-27	摆针扳手定位挡圈 Locating retainer of spanner	√	1	√	1
28	U43T5-28	摆针扳手轴套垫圈 Washer	√	1	√	1
29	U43T5-29	摆针扳手轴套 Spanner sleeve	√	1	√	1
30	U43T5-30/31	摆针扳手组件 Spanner component	√	1	√	1
31	U43T5-34	摆针针距左定位块 Left locating block for stitch wide	√	1	√	1
32	U43T5-35	摆针针距右定位块 Right locating block for stitch wide	√	1		
33	U43T5-36	摆针针距定位垫圈 Washer of locating block	√	2	√	2
34	U43T5-37	摆针针距定位块螺钉 Screw of locating block	√	2	√	2
35	U43T5-38	摆针定位螺钉 Locating screw	√	2	√	2
36	U43T5-39	摆针针距定位架螺钉 Lcating rack for stitch wide	√	2	√	2
37	U43T5-40	摆针针距定位架 Screw of locating rack	√	1	√	1
38	U43T5-41	摆针针距调节架(A) Adjusting rack (A) for stitch wide	√	1	√	1
39	U43T5-42	摆针针距调节架(B) Adjusting rack (B)	√	1	√	1
40	U43T5-43	摆针针距定位架拉簧 Extension spring of lcoating rack	√	1	√	1

序号 Seri No.	图号 Code No.	名称 Description	适用产品 Products applicable			
			曲折缝 Curved- stitching	数量 Qty	双针曲折缝 Double Curved- stitching	数量 Qty
41	U43T5-44	差动连接轴挡圈 Petainer of differential connecting shaft	√	1	√	1
42	U43T5-45	差动曲柄轴 Differential crank	√	1	√	1
43	U43T5-48	差动连接轴 Differential connecting shaft	√	1	√	1
44	U43T5-49-0	差动曲柄定位架组件 Locating rack component	√	1	√	1
45	U43T5-50	定位架轴套支头螺钉 Set screw of locating rack sleeve	√	1	√	1
46	U43T5-51	差动曲柄定位架螺钉 Screw of crank locating rack	√	2	√	2
47	U43T5-52	拉簧螺钉 Screw of extension spring	√	1	√	1
48	U43T5-53	大差动连杆连接螺钉 Connecting screw	√	1	√	1
49	U43T5-54	小油盘 Oil tray	√	1	√	1
50	U43T5-55	油纱带 Oil gauze	√	1	√	1
51	U43T5-56	油盘毡 Felt of oil tray	√	1	√	1
52	U43T5-57	平垫圈 Flat washer	√	2	√	2
53	U43T5-58	小油盘螺钉 Screw of oil tray	√	2	√	2
54	U43T5-59	弹性垫圈 Elsatc washer	√	2	√	2
55	U43T5-61	右、中、右定位架 Locating rack	√	1	√	1
56	U43T5-62	左、中、右定位架螺钉 Screw	√	2	√	2
57	U43T5-63	左、中、右扳手组件 Handle component	√	1	√	1
58	U43T5-64	左、中、右定位螺钉 Locating pin	√	1	√	1
59	U43T5-65	左、中、右定位拨杆 Adjusting rack	√	1	√	1
60	U43T5-66	左、中、右调节架螺钉 Screw	√	2	√	2
61	U43T5-67	左、中、右定位螺钉, 螺母 Screw, nut	√	2	√	2

2. 2D-REPRESENTATION OF THE 3D-SPACE



6、压脚部件 Components of presser foot

序号 Seri No.	图号 Code No.	名称 Description	适用产品 Products applicable			
			曲折缝 Curved- stitching	数量 Qty	双针曲折缝 Double Curved- stitching	数量 Qty
1	U43T6-1	调压螺钉 Screw for pressures-adjusting	√	1	√	1
2	U43T6-2	压杆簧 Pressing bar spring	√	1	√	1
3	U43T6-3	压紧杆 Presser bar	√	1	√	1
4	U43T6-4	压脚螺钉 Screw of presser foot	√	1	√	1
5	U43T6-5-0	压脚组件 Presser foot component	√	1	√	1
6	U43T6-6	压脚扳手销 Spanner pin	√	1	√	1
7	U43T6-7	压脚扳手 Spanner	√	1	√	1
8	U43T6-8	压脚扳手销螺套 Spanner pin screw	√	1	√	1
9	U43T6-9	压脚导架 Presser bar bracket	√	1	√	1
10	U43T6-10	压脚导架螺钉 Screw of bracket	√	1	√	1
11	U43T6-11	挺线定位座 Locating base	√	1	√	1
12	U43T6-12	膝提杠杆座螺钉 Screw of lever base	√	2	√	2
13	U43T6-13-0	膝提杠杆组件 Component of locating base	√	1	√	1
14	U43T6-14	开口销 Open-pin	√	3	√	3
15	U43T6-15	抬压脚拉杆 Presser foot rod	√	1	√	1
16	U43T6-16	膝提横针拉杆 Rod of horizontal needle	√	1	√	1
17	U43T6-17	抬压脚杠杆 Presser foot lever	√	1	√	1
18	U43T6-18	抬压脚杠杆螺钉 Lever screw	√	1	√	1

