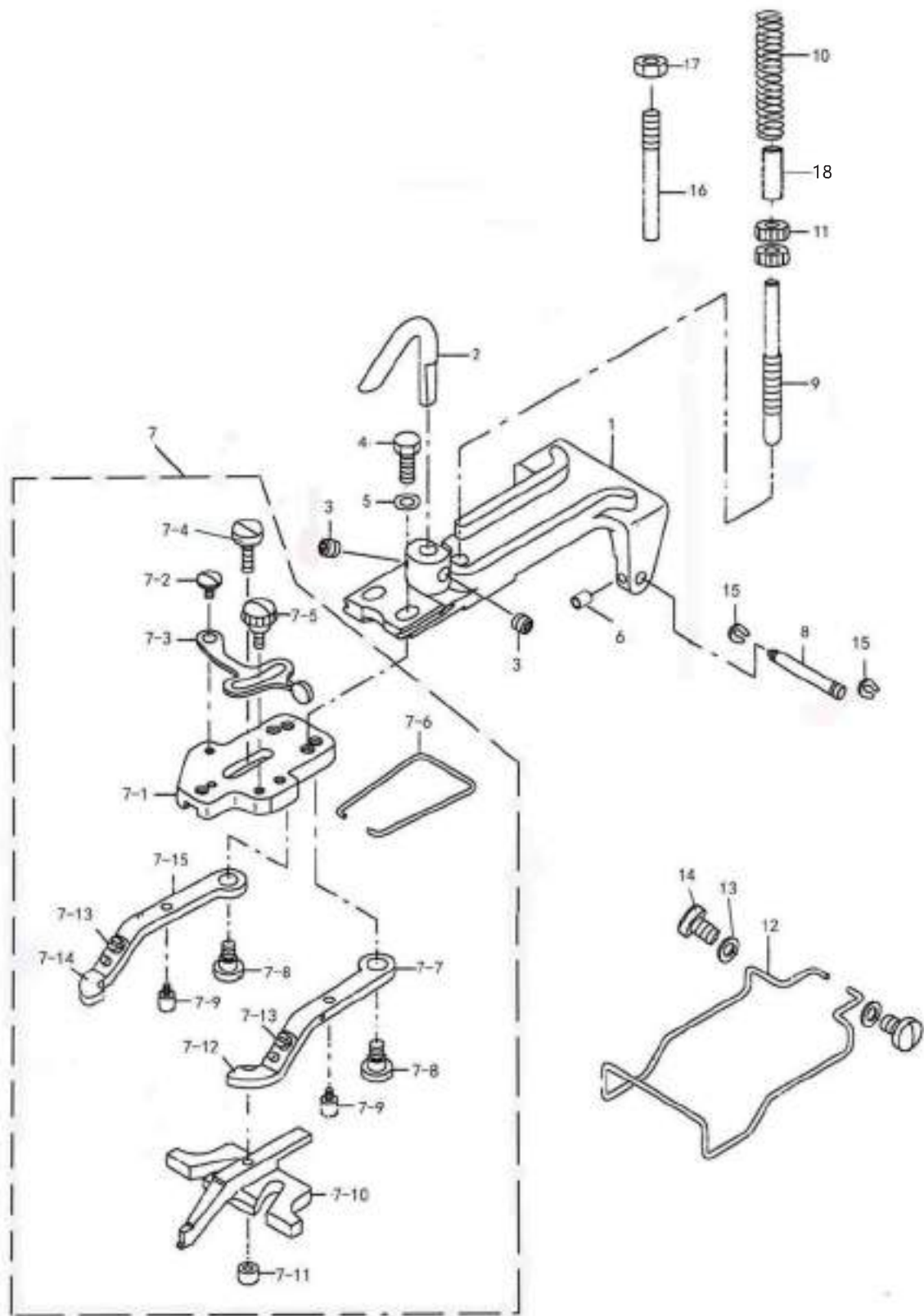


# 零件样本

(Parts Book)

# 1. 钮钳机构部件 BUTTON CLAMP MECHANISM COMPONENTS

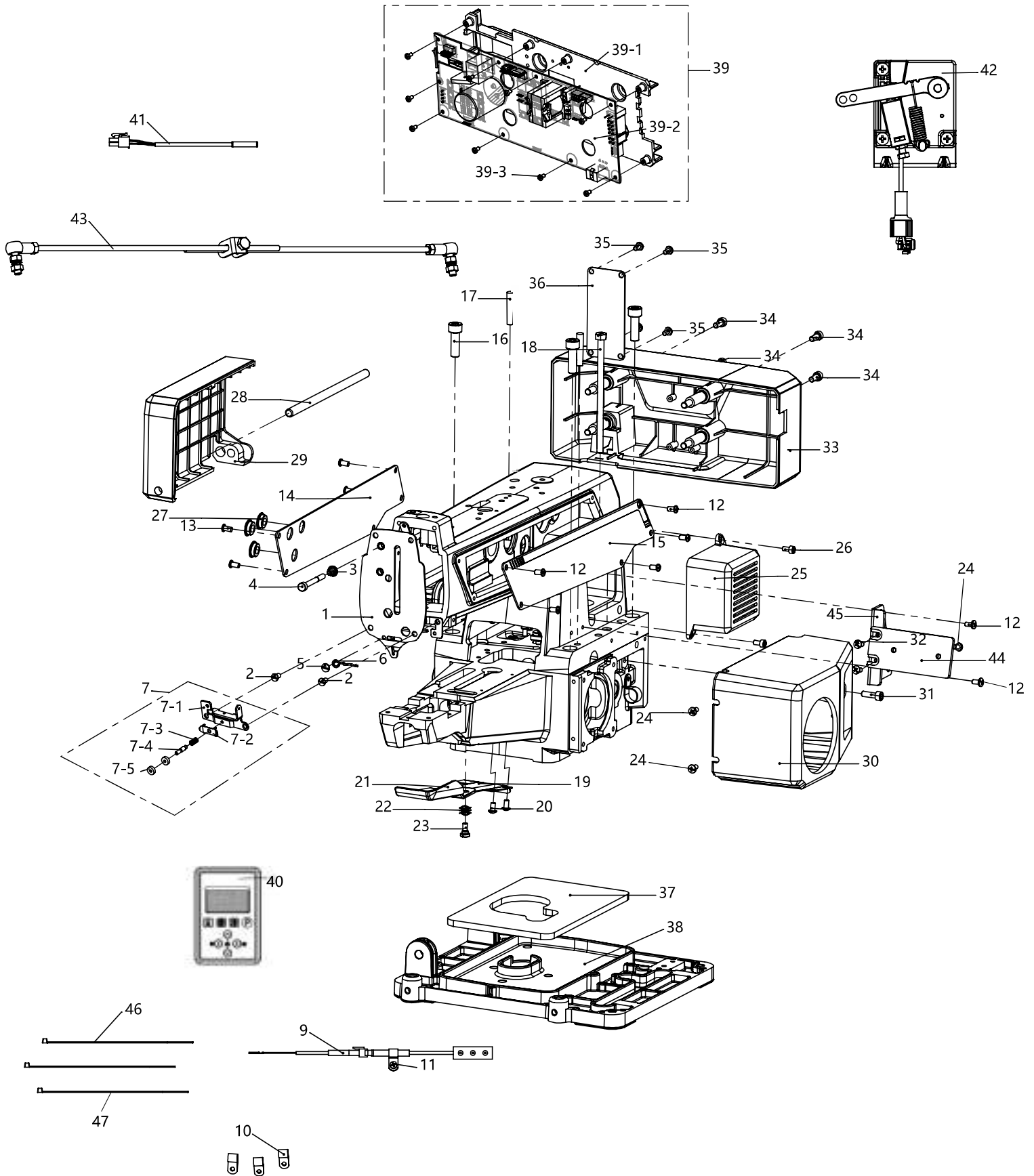


## 1、钮钳机构部件/Button clamp mechanism components

序号	零件件号	名称	数量	DESCRIPTION
1	300145	钮钳座	1	BUTTON CLAMP HOULDER
2	40902001	钮针提升杆	1	BUTTON CLAMP LIFTING HOOK
3	402S14001	螺钉	2	SCREW 15/64-28 L=8
4	409S12001	螺钉	2	SCREW 3/16-32 L=13.5
5	40928001	垫圈	2	WASHER 5×10.5×1.5
6	413S14004	螺钉	2	SCREW M3×4
7	4091200100	钮钳杆座组件	1	BUTTON CLAMP
7-1	40912002	钮夹控制座	1	JAW LEVER HOLDER
7-2	409S20002	轴位螺钉	1	HINGE SCREW D=5.5 H=1.8
7-3	40912003	钮夹止动杆	1	SNAP FASTENER CLAMP STOP LEVER
7-4	409S20001	合叶螺钉	1	HINGE SCREW D=5.5 H=3
7-5	409S20003	钮夹螺钉	1	CLAMP SCREW
7-6	40927001	钮夹弹簧	1	BUTTON CLAMP SPRING
7-7	40912008	右钮夹钳夹	1	BUTTON CLAMP LEVER JAW RIGHT
7-8	409S20005	轴位螺钉	2	HINGE SCREW D=6.35 H=3.9
7-9	409S20004	钮夹止动销	2	BUTTON CLAMP STOP PIN
7-10	40901003	钮夹滑块	1	BUTTON CLAMP SLIDE
7-11	409S16001	螺母	1	NUT 9/64-40
7-12	40912009	钮夹右弹簧压板	1	BUTTON HOLDING SPRING RIGHT
7-13	409S11002	螺钉	2	SCREW 9/64-40 L=3.5
7-14	40912006	钮扣左弹簧压板	1	BUTTON HOLDING SPRING LEFT
7-15	40912005	左钮夹钳夹	1	BUTTON CLAMP LEVER JAW LEFT
8	40902002	合叶销	1	HINGE PIN
9	409S30002	钮钳调压杆	1	BUTTON CLAMP PRESSUER ADJUSTIN
10	40527005	钮夹压力弹簧	1	PRESSUER ADJUSTING SPRING
11	405S16001	螺母	2	NUT 1/4-40
12	40927003	手指保护架	1	FINGER GUARD
13	30128010	垫圈	2	WASHER 4.6×12×1.5
14	402S11007	螺钉	2	SCREW 11/64-40 L=3.5
15	H05002	GB/T896-1986 挡圈 3	2	E-RING 3
16	409S30001	钮钳塞销	1	PICK-UP DEVICE STOPPER PIN
17	401S16002	六角螺母	1	NUT 15/64-28
18	140903024	轴套	1	SHAFT SLEEVE

## 2. 机壳部件

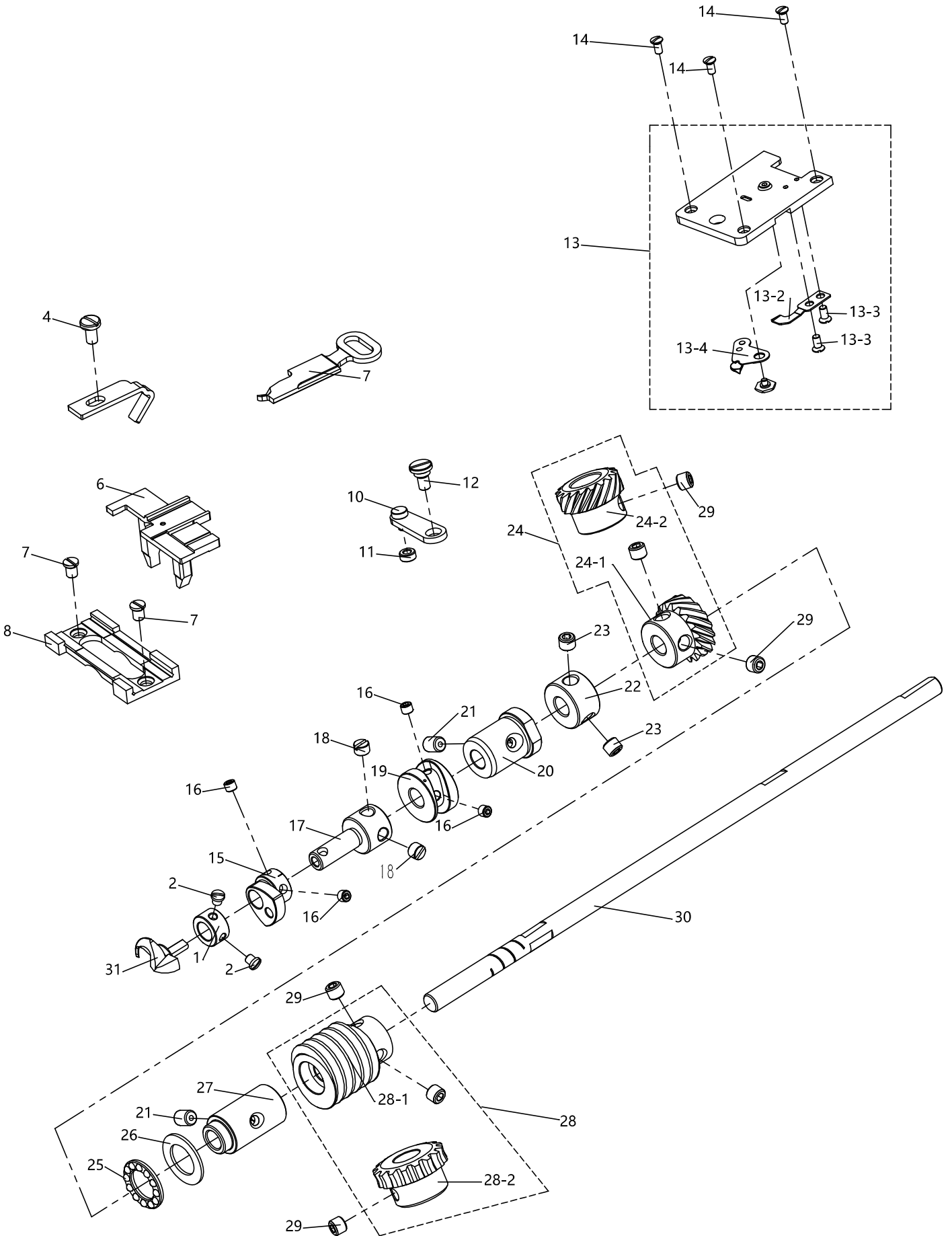
## Arm & miscellaneous cover components



## 2、机壳部件/Arm & miscellaneous cover components

序号	零件件号	名称	数量	DESCRIPTION
1	4091206200	面板盖组件	1	FACE PLATE COMPL
2	406S11009	螺钉	4	SCREW 11/64-40 L=8
3	40927004	第三夹线弹簧	1	TENSION SPRING
4	40902003	夹线螺栓	1	NIPPER RELEASING STUD
5	406S11009	螺钉	1	SCREW 11/64-40 L=8
6	40913002	第四线导向装置	1	THREAD GUIDE NO.4
7	4091301400	3 号线张力器组件	1	THREAD TENSION NO.3 ASM.
7-1	40913015	3 号线张力调节座	1	TENSION ADJUSTING BASE NO.3
7-2	40913016	线张力盘	1	THREAD PRESSER PLATE
7-3	40927020	弹簧	1	TENSION SPRING B
7-4	409S30017	线张力器螺栓	1	THREAD TENSION STUD THREAD
7-5	409S16026	张力调节螺母	2	TENSION NUT
8	406S11009	螺钉	5	SCREW 11/64-40 L=8
9	40930008	LED 灯(TD-5)	1	LED LAMP
10	41711014	电线夹 6.4	2	WIRE CLIP
11	417S30025	十字槽小盘头螺钉(带垫圈)	13	SCREW M4×10
12	S04078	螺钉	5	SCREW 11/64-40 L=8
13	S04078	螺钉	5	SCREW 11/64-40 L=8
14	140912014	左侧盖板	1	LEFT SIDE COVER PLATE
15	140912015	右侧盖板	1	RIGHT SIDE COVER PLATE SCREW
16	S05024	内六角圆柱头螺钉 M8x25圆	4	M8 L=25
17	-----	锥销 A6x32	2	GUIDE PIN
18	409S30018	开槽六角头螺栓	1	SET SCREW
19	140912023	底座防油罩	1	BASE OIL SHIELD
20	140912016	下活动盖	1	LOWER MOVABLE COVER
21	140911001	电机罩壳	1	SIDE COVER
22	40128001	波形垫圈	3	SPRING WASHER
23	409S20006	开槽圆柱头轴位螺钉	1	HINGE SCREW D=6 H=2.8 SCREW
24	417S30025	螺钉	2	11/64-40 L=8
25	140911005	电机罩	1	MOTOR COVER
26	S04078	螺钉	2	SCREW 11/64-40 L=8
27	40122017	橡皮塞	4	RUBBER STOPPER
28	40902019	左侧盖轴	1	SIDE COVER HINGE SHAFT LEFT
29	140911002	左盖	1	LEFT LID
30	140911003	右盖	1	RIGHT LID
31	S05124	内六角螺钉 M5×16	1	SCREW M5 L=16
32	417S30025	螺钉	6	SCREW 11/64-40 L=8
33	140911004	后盖	1	BACK COVER
34	S05133	内六角螺钉 M4×12	2	SCREW M4 L=12
35	S04078	螺钉	4	SCREW 11/64-40 L=8
36	140912017	后盖板	1	BACK COVER PLATE
37	140923003	滴油毡	1	DRIP FELT
38	140901013	油盘	1	OIL PAN
39	14090003300	一体电控组件	1	CONTROL BOX
39-1	-----	散热板	1	HEAT SINK
39-2	-----	主板	1	MAIN BOARD
39-3	-----	十字槽小盘头螺钉 M3×5操	1	SCREW M3×5
40	140930006	作面板	1	OPERATION PANEL
41	195430015	行程感应器/75mm	1	TRAVEL SENSOR 75MM
42	10130044	塑壳调速器	1	MOLDED CASE GOVERNOR
43	195000025	脚踏转接线	1	FOOT SWITCH LINE
44	140212006	联接板	1	CONNECTING PLATE
45	40312619	操作面板支架1	1	OPERATION PANEL BRACKET FOOT
46	61910003	扎带(小)	2	LINK
47	61910001	扎带(大)	1	FOOT LINK
48	1409NS10002	连接螺栓	4	CONNECTING BOLT
49	N01024	螺母	1	NUT

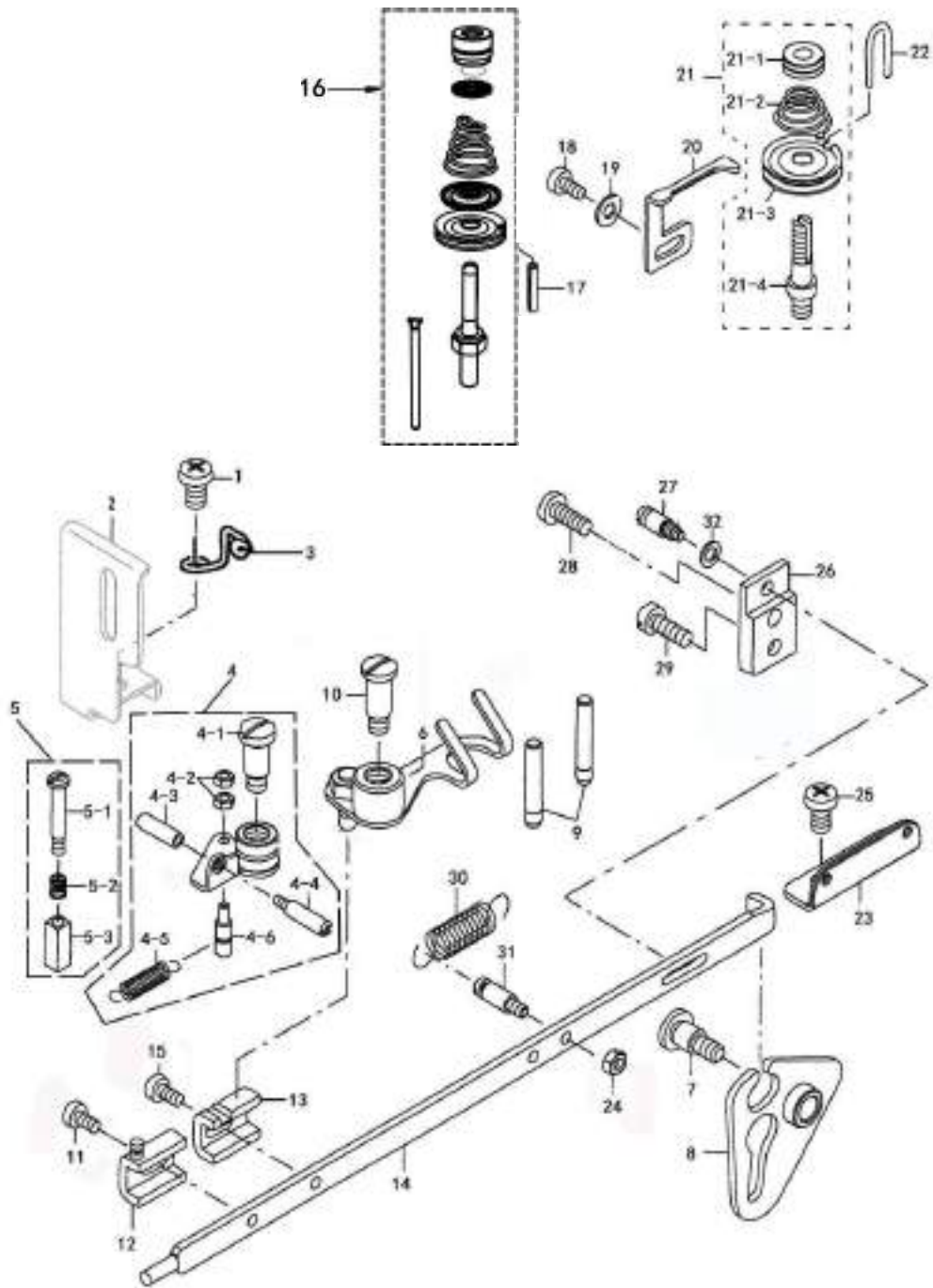
### 3. 下轴部件 LOOPER SHAFT MECHANISM COMPONENTS



### 3、下轴部件/Looper shaft mechanism components

序号	零件件号	名称	数量	DESCRIPTION
1	40908002	挡圈	1	THRUST COLLAR D=7.94 W=7
2	409S11012	螺钉	1	SCREW 9/64-40 L=6
3	409S11031	螺钉	1	SCREW 9/64-40 L=3.5
4	409S11010	螺钉	1	SCREW 11/64-40 L=7.8
5	40912021	导向线杆 (打捆针导向器)	1	NEEDLE GUARD
6	40909001	插入导向滑板	1	POSITONGNING FINGER YOKE SLIDE
7	409S17001	螺钉	2	SCREW 11/64-40 L=6.5
8	40909002	导向卡箍 (压铁插孔)	1	YOKE SLIDE INSERT
9	40912022	滑块 (压铁片)	1	YOKE SLIDE
10	4090500100	环形定位杆	1	ASSY LOOP POSITIONING FINGER L
11	40903003	滚珠	1	LOOP POSITIONNING FINGER CAM RO
12	409S20008	轴位螺钉	1	HINGE SCREW D=6.35 H=2.4
13	-----	针板组件	1	THROAT PLATE SET
13-1	40901005	针板	1	THROAT PLATE ASM.
13-2	40919003	定刀	1	COUNTER KNIFE
13-3	-----	螺钉	2	SCREW1/8-44 L=3.0
13-4	4091900100	动刀	1	MOVING KNIFE ASM.
13-5	-----	螺钉	1	HINGE SCREW D=6 H=0.85
14	1409NS17002	螺钉	3	SCREW 11/64-40 L=9.5
15	40910001	环形凸轮	1	LOOP POSITIONING FINGER CAM
16	409S14002	螺钉	4	SCREW 11/64-40 L=3.5
17	40902006	连接轴	1	CAM AND LOOPER SLEEVE
18	409S15004	螺钉	2	SCREW 15/64-28 L=4
19	40910002	后凸轮	1	LOOP POSITIONGNING FINGER CAM RE
20	140903006	下轴前套	1	LOOPER SHAFT BUSHING FRONT
21	401S14001	螺钉	2	SCREW 15/64-28 L=8
22	140908003	下轴挡圈	1	THRUST COLLAR
23	402S14002	内六角平端紧定螺钉	2	SCREW 1/4-40 L=5
24	14092500800	斜齿轮副组件	1	HELICAL GEAR PAIR ASSEMBLY
24-1	140925002	下轴齿轮	1	LOOPER SHAFT DRIVER GEAR ASM.
24-2	40925004	驱动齿轮	4	SCREW 1/4-40 L=6
25	40924001	端面轴承	1	THRUST BALL BEARING
26	40928004	轴承垫圈	1	BEARING WASHER
27	140903007	下轴后套	1	LOOPER SHAFT BUSHING REAR
28	14090003500	蜗杆组件	1	WORM ASM.
28-1	140925003	蜗杆	1	WORM
28-2	40925001	蜗轮	2	SCREW 1/4-40 L=6
29	402S14002	内六角紧定螺钉	8	CAM SHAFT DRIVEN GEAR.
30	140902008	下轴	1	LOOPER SHAFT

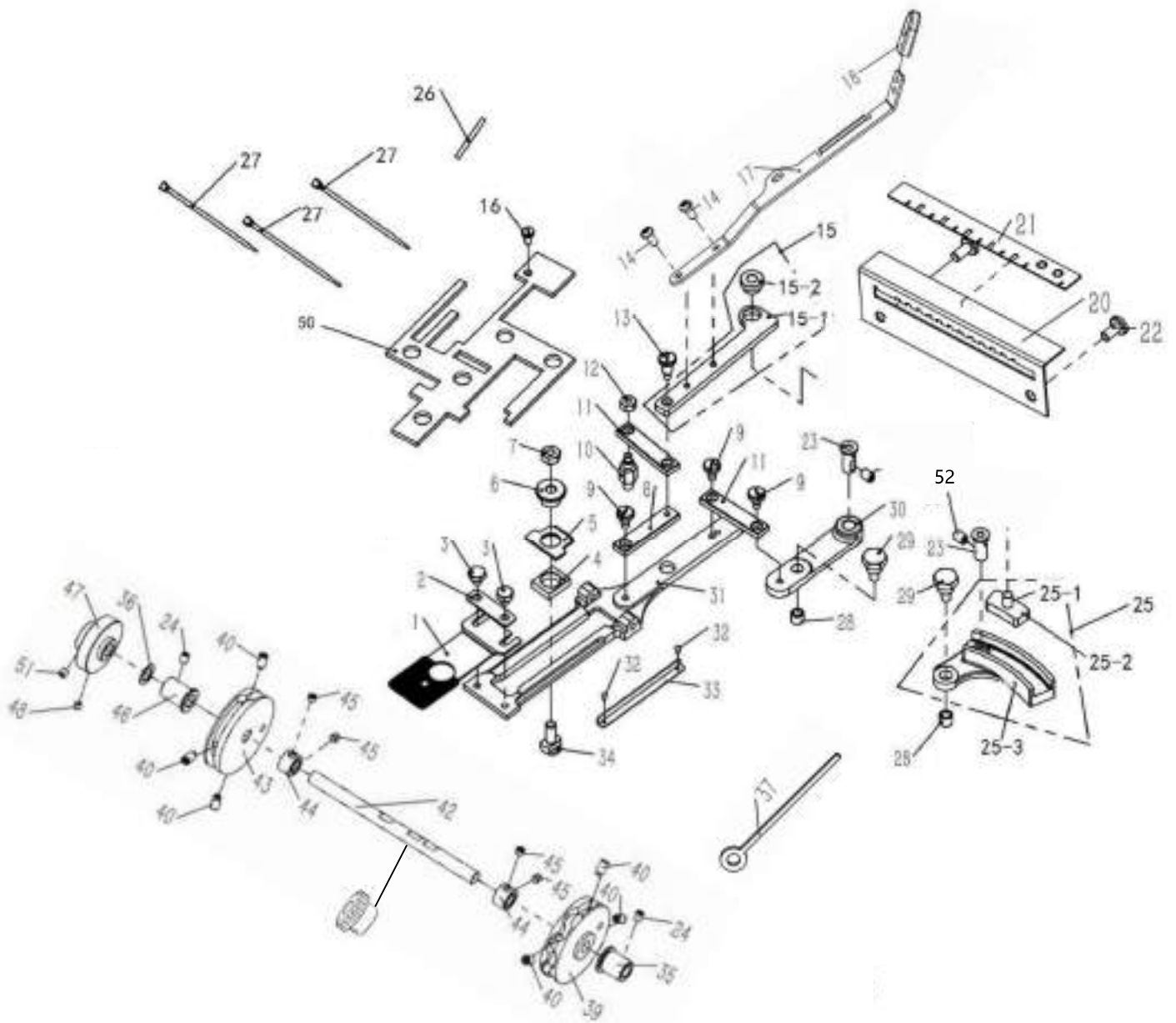
#### 4. 绕线和过线部件 NIPPER & THREAD TENSION PARTS COMPONENTS



#### 4、绕线和过线部件/Nipper & tension parts components

序号	零件件号	名称	数量	DESCRIPTION
1	409S11013	螺钉	1	SCREW 15/64-28 L=9
2	-----	针杆防护罩(附件)	1	NEEDLE BAR GUARD
3	40913012	2号导线钩	1	THREAD GUIDE
4	4091202500	导线装置	1	NIPPER COMPL.
4-1	-----	轴位螺钉	1	HINGE SCREW
4-2	409S16005	螺母	2	NUT
4-3	409S16006	松线螺母	1	NUT
4-4	409S20011	松线销	1	LOOPER SHAFT BUSHING REAR
4-5	40927007	夹线杆拉伸弹簧	1	NIPPER BAR BLOCK SPRING
4-6	409S30004	弹簧销	1	NIPPER BAR BLOCK SPRING SCREW
5	40909003	夹线座	1	NIPPER BLOCK ASM.
5-1	409S20012	螺栓	1	HINGE SCREW D=4 H=20
5-2	40927008	夹线座弹簧	1	NIPPER SLIDE BLOCK SPRING
5-3	-----	夹线座	1	NIPPER BLOCK
6	4091300400	引线杆组件	1	THREAD PULL OFF LEVER ASM.
7	409S20014	驱动杆轴位螺钉	1	HINGE SCREW D=7.94 H=8
8	4091202700	夹线杆驱动杆组件	1	NIPPER BAR ACTUATING LEVER ASM.
9	40926006	导线杆	2	THREAD GUIDE PIN
10	409S20013	轴位螺钉	1	HINGE SCREW D=7.94 H=15
11	409S11014	螺钉	1	SCREW 3/16-28 L=9
12	40912029	夹线杆驱动块	1	NIPPER BAR BLOCK
13	40912030	拨线杆驱动块	1	TENSION LEVER ROCKING PIECE
14	40912031	夹线杆	1	NIPPER BAR
15	409S11014	螺钉	1	SCREW 3/16-28 L=9
16	4091300600	2号夹线杆组件	1	TENSION POST ASM NO. 2
17	P03009	弹性圆柱销	1	SPRING PIN 3×16
18	409S11014	螺钉	1	SCREW 3/16-28 L=9
19	40928001	垫圈	1	WASHER
20	40912034	释压杆	1	THREAD TENSION RELEASING LEVER
21	4091300800	1号夹线器组件	1	ASSY HTREAD RENSIION NO. 1
21-1	409S16009	调节螺母	1	THREAD TENSION NUT
21-2	40927010	夹线器弹簧	1	FIRST THREAD TENSION SPRING
21-3	40913007	夹线板	2	THREAD RENSIION DISK NO. 1
21-4	409S30007	第一夹线杆	1	THREAD RENSIION POST NO. 2
22	40913009	导线钩	1	THREAD GUIDE
23	40913010	二眼线板	1	THREAD GUIDE NO. 1
24	409S16024	螺母	1	NUT 1/8-44
25	409S11013	螺钉	1	SCREW 15/64-28 L=9
26	40912100	夹线杆滑块	1	NIPPER BAR BEARING BLOCK
27	409S30008	调节螺钉	1	ADJUSTING SCREW
28	409S11015	螺钉	1	SCREW 3/16-28 L=15.5
29	409S11016	螺钉	1	SCREW 3/16-28 L=9.5
30	40927011	2号钳杆弹簧	1	THREAD TENSION SPRING
31	409S30009	夹线杆拉伸弹簧螺钉	1	NIPPER BAR SPRING SCREW
32	40928005	垫圈	1	WASHER 4.8×9.4×0.8

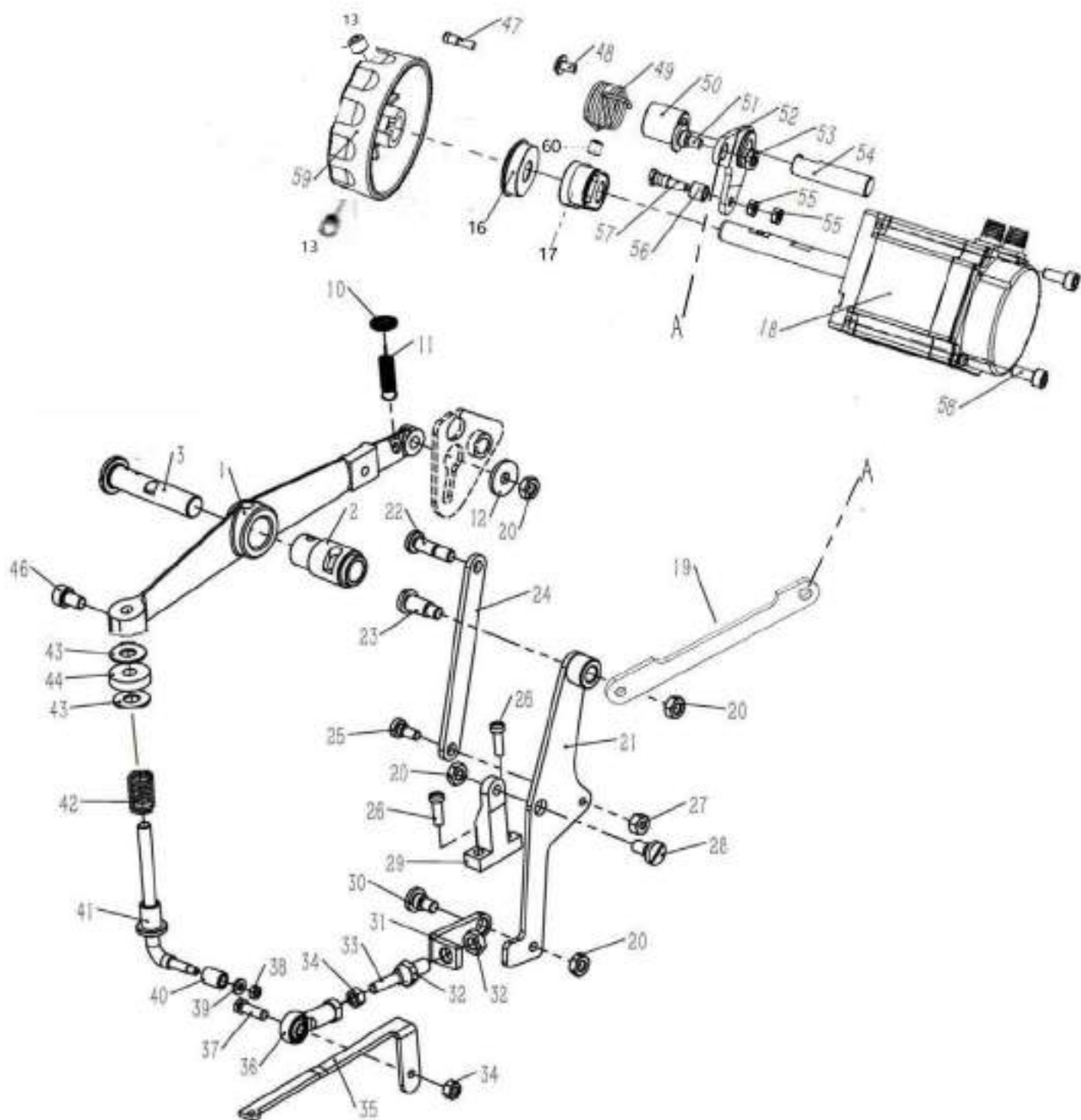
## 5. 373G送料盘部件 Feed plate components



## 5、373G 送料盘部件/Feed plate components

序号	零件号	名称	数量	DESCRIPTION
1	40915001	钮扣送料板	1	FEED PLATE SMALL BUTTON
2	40912040	隔离板	1	SEGREGATION BOARD
3	409S12003	螺钉	2	SCREW 3/16-28 L=6
4	40909004	指示器销滑块	1	INDICATOR PIN SLIDER
5	40912036	交叉送料指示器	1	CROSS FEED INDICATOR
6	40903010	指示器销	1	THE INDICATOR PIN
7	409S16012	六角螺母	1	HEX NUT 1/4-24
8	40909005	滑板连接杆	1	SLIDE PLATE CONNECTING LINK
9	409S20015	开槽圆柱头轴位螺钉	3	HINGE SCREW D=6.35 H=4.8
10	409S30010	双头螺柱	1	STUD
11	40909006	中部连接杆	2	CENTER LINK
12	409S16013	六角螺母	1	NUT 3/16-28
13	409S20016	开槽圆柱头轴位螺钉	1	HINGE SCREW D=6.35 H=9.6
14	201S11009	十字槽圆柱头螺钉	2	SCREW 9/64-40 L=5.5
15	4091203700	手柄及指示销弹簧手柄组件	1	INDICATOR SPRING CONNECTING LINK MODULE
15-1	40912038	手柄指示器弹簧手柄	1	INDICATOR SPRING CONNECTING LINK
15-2	40903011	手柄及指示器弹簧手柄套	1	INDICATOR SPRING CONNECTING LINK SLEEVE
16	409S11005	开槽圆柱头螺钉(切换)	1	SCREW 11/64-40 L=7.8
17	140912020	调节手柄	1	HANDLE & INDICATOR SPRING
18	140944001	手柄套	1	HANDLE SLEEVE
20	409S11003	复合槽螺钉	2	SCREW 3/16-28 L=9
21	140912019	送料调节刻度条	1	FEEDING ADJUSTMENT SCALE BAR
22	140912018	送料调节刻度架	1	FEEDING ADJUSTMENT SCALE
23	40926010	杆销	2	FEED STUD
24	401S14001	螺钉	3	SCREW 15/64-28 L=8
25	40909007	纵向送料杆滑块座组件	1	LENGTHWISE FEED LEVER ASM MODULE THE
25-1	40926009	滑块连杆	1	SLIDER CONNECTING ROD
25-2	40909008	纵向送料杆滑块	1	LENGTHWISE FEED GRADUATE PLATE
25-3	140909001	纵向送料杆滑块座	1	LENGTHWISE FEED LEVER ASM
26	40923012	油线	0.72	THE OIL LINE
27	61910003	扎带(小)	3	CABLE BAND
28	40903012	凸轮滚碾	2	CAM ROLL
29	409S30019	凸轮滚碾螺栓	2	CAM ROLL SCREW STUD
30	40901007	交叉送料杆	1	CROSSWISE FEED LEVER
31	40901006	滑板	1	FEED PLATE
32	-----	铆钉2×4	2	RIVET
33	40937001	交叉送料刻度盘	1	CROSSWISE FEED GRADUATED LINK
34	409S30012	合叶螺钉	1	HINGES SCREW
35	40903039	凸轮轴右套	1	CAM SHAFT BUSHING RIGHT
36	140928001	凸轮轴垫圈	2	CAMSHAFT WASHER
37	40223005	油毡	2	FELT
39	140910002	横向送料凸轮	1	TRANSVERSE FEED CAM
40	409S14005	内六角圆柱端紧定螺钉	5	SCREW 9/32-28 L=13.5
41	140903003	蜗轮定位套	1	WORM GEAR LOCATING SLEEVE
42	140902009	凸轮轴	1	CAM SHAFT
43	40910004	纵向送料凸轮	1	LENGTHWISE FEED CAM
44	40908001	纵向送料凸轮定位套	1	LONGITUDINAL FEED CAM LOCATING SLEEVE
45	409S14001	内六角平面端紧定螺钉	4	SCREW 1/4-40 L=6
46	40903040	凸轮轴左套	1	CAM SHAFT BUSHING LEFT
47	40930003	信号轮	1	SINGLE WHEEL
48	40930007	磁铁	1	MAGNET
49	417S30025	十字槽小盘头螺钉(带垫圈)	2	SCREW M4×10
50	40923015	油毡	1	FELT
51	402S14006	螺钉	2	SCREW 15/64-28 L=6
52	401S14001	内六角平端紧定螺钉	4	SCREW 15/64-28 L=8
53	403S14008	内六角平端紧定螺钉	1	SCREW M5×8

## 6. 钮钳提升机构部件 BUTTON CLAMP LIFTER COMPONENT

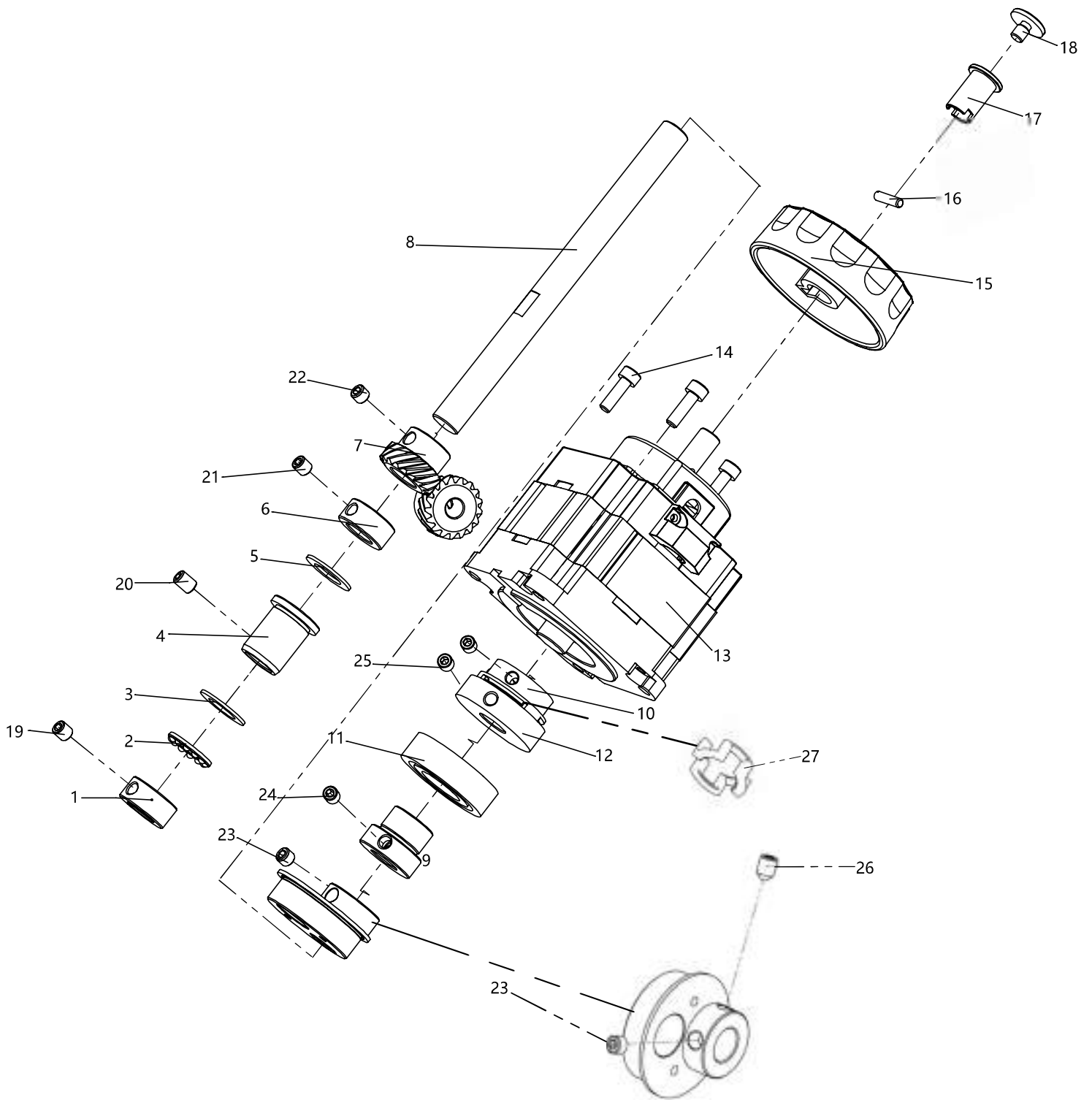


## 6、钮钳提升部件/Button clamp lifter components

序号	零件号	名称	数量	DESCRIPTION
1	40901033	钮钳提升杆	1	LIFTING LEVER
2	40903016	轴衬	1	BUSHING
3	40902009	提升杆轴	1	LIFTING LEVER SHAFT
10	40912032	夹线制动板	1	WASHER
11	40927012	夹线杆动作杆弹簧	1	NIPPER BAR ACTUATING LEVER SPRING
12	40128034	垫圈	1	WASHER 6×18.3×2
13	510008	开槽大圆柱头螺钉	1	SLOTTED CYLINDRICAL HEAD AXIAL SCREW
14	140903009	手轮卡套	1	HAND WHEEL FERRULE
15	1409NS10001	卡销螺钉	1	CLIP SCREW
16	40324009	深沟球轴承6000-ZZNR	1	DEEP GROOVE BALL BEARING
17	140910005	抬剪凸轮	1	LIFTING SHEAR CAM
18	140933008	抬剪步进电机	1	STEPPING MOTOR FOR LIFTING SHEAR
19	140905033	抬剪曲柄连杆	1	MAGNET CONNECT POLE
20	401S16002	六角螺母	4	NUT 15/64-28
21	4091202100	连杆组件	1	CRANK ROD
22	409S20023	开槽圆柱头轴位螺钉	1	HINGE SCREW D=6.35 H=13.5
23	409S20038	开槽圆柱头轴位螺钉	1	HINGE SCREW D=7.94 H=13
24	40912090	切线连杆	1	THREAD TRIMMING LINK
25	409S20036	开槽圆柱头轴位螺钉	1	HINGE SCREW D=6.35 H=3
26	409S11021	开槽球面圆柱头螺钉	2	SCREW 11/64-40 L=14
27	409S16013	六角螺母	1	NUT 3/16-28
28	1409NS20001	开槽圆柱头轴位螺钉	1	HINGE SCREW D=7.94 H=3
29	40901036	剪线杆底座	1	THREAD TRIMMING LEVER BASE
30	409S20037	开槽圆柱头轴位螺钉	1	HINGE SCREW D=7.94 H=4
31	40912089	后剪线连接杆	1	CONNECTING LINK REAR
32	409S16015	六角螺母	2	NUT 9/32-28
33	409S30013	连接螺钉	1	SCREW
34	N01004	六角螺母M5	2	NUT M5
35	140912005	前剪线连接杆	1	CONNECTING LINK AGO
36	4030500500	连接曲柄组件	1	FEED ADJUSTING JOINT
37	L01002	六角头螺栓	1	HEXAGON BOLT
38	409S16014	六角螺母	1	NUT 9/64-40
39	40928021	垫圈	1	WASHER 4×8×1.2
40	40903020	提升杆滚子	1	LIFT ROD ROLLER
41	4090201100	钮钳提升杆钩组件	1	BUTTON CLAMP LIFTING ROD COMPL
42	40527015	复位弹簧	1	RESET SPRING
43	40928014	平垫圈	2	WASHER 8.3×17.8×1.1
44	40922001	缓冲垫	1	CUSHION
46	S05023	内六角圆柱头螺钉	1	SCREW M6×10
47	1409NS20002	螺钉销	1	SCREW PIN
48	417S15008	螺钉M4×8	1	SCREW M4×8
49	11327001	弹簧	1	SPRING
50	140903008	复位扭簧旋转套	1	RESET TORSION SPRING ROTATING SLEEVE
51	403S20010	轴位螺钉	1	AXIAL SCREW
52	140610005	抬剪曲柄	1	LIFTING SHEAR CRANK
53	403S16006	六角螺母	1	HEXAGON NUT
54	140902010	抬剪曲柄轴	1	LIFTING SHEAR CRANK SHAFT
55	403S16005	六角螺母	2	HEXAGON NUT
56	40303019	滚筒	1	ROLLER
57	403S20009	轴位螺钉	1	AXIAL SCREW
58	S05133	内六角螺钉M4×12	4	SCREW M4×12
59	14201100200	手轮组件	1	HANDWHEEL ASSEMBLY
60	402S14001	内六角紧定螺钉	1	CAM SHAFT DRIVEN GEAR.

# 7. 驱动轴部件

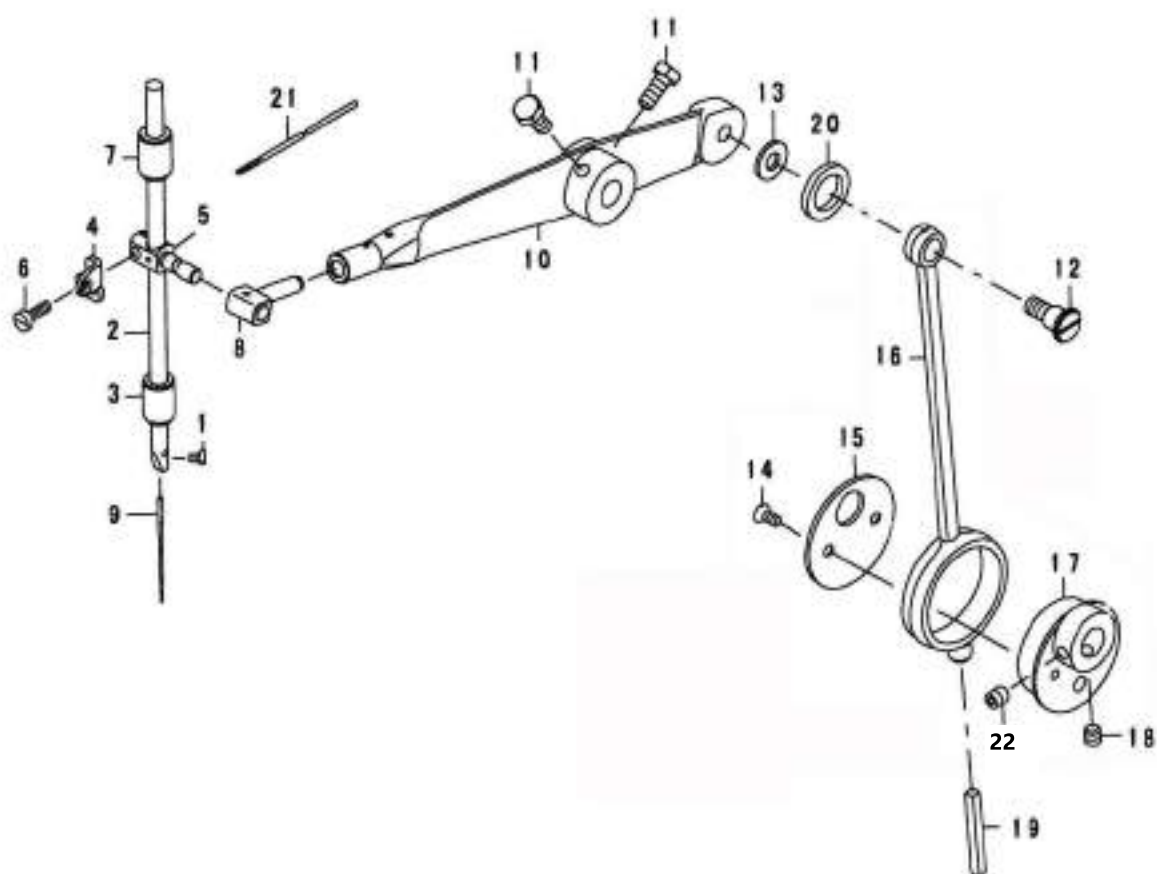
# Drive shaft parts



## 7、驱动轴部件/Drive shaft parts

序号	零件件号	名称	数量	DESCRIPTION
1	40603020	挡圈	1	THRUST COLLAR
2	40924001	端面轴承	1	THRUST BALL BEARING
3	40928004	轴承垫圈	1	BEARING WASHER
4	140903010	驱动轴左套	1	DRIVE SHAFT LEFT SLEEVE
5	40928004	轴承垫圈	1	BEARING WASHER
6	40603020	挡圈	1	THRUST COLLAR
7	14092500800	斜齿轮副组件	1	HELICAL GEAR PAIR ASSEMBLY
8	140902011	驱动长轴	1	DRIVE LONG SHAFT
9	140903011	轴承长衬套	1	BEARING LONG BUSH
10	40201069	联轴器传动块2	1	COUPLING DRIVE BLOCK 2
11	B02004	深沟球轴承	1	DEEP GROOVE BALL BEARING
12	140901023	联轴器传动块1	2	COUPLING DRIVE BLOCK 1
13	140933012	光电伺服电机	1	ECCENTRIC CAM
14	S05124	内六角螺钉M5×16	4	HEXAGON SOCKET SCREW M5×16
15	14201100200	手轮组件	1	HANDWHEEL ASSEMBLY
16	1409NS10001	卡销螺钉	1	CLIP SCREW
17	140903009	手轮卡套	1	HAND WHEEL FERRULE
18	403S11003	开槽大圆柱头螺钉	1	SLOTTED LARGE CYLINDRICAL HEAD SCREW
19	413S14001	内六角螺钉	2	HEXAGON SOCKET SCREW
20	401S14001	内六角平端紧定螺钉	1	HEXAGON SOCKET SET SCREW
21	413S14001	内六角螺钉	2	HEXAGON SOCKET SCREW
22	402S14002	内六角平端紧定螺钉	2	HEXAGON SOCKET SET SCREW
23	402S14002	内六角平端紧钉螺钉	1	HEXAGON SOCKET SET SCREW
24	402S14006	螺钉	1	SCREW
25	403S14005	螺钉	1	SCREW
26	1409NS14002	内六角锥端紧钉螺钉	1	HEXAGON CONE END FASTENING SCREW
27	40222040	减震橡胶	1	SHOCK-REDUCING RUBBER

## 8. 针杆驱动部件 NEEDLE BAR DRIVING MECHANISM COMPONENTS



## 8、针杆驱动机构部件/Needle bar driving mechanism components

序号	零件件号	名称	数量	DESCRIPTION
1	101S11006	支针螺钉	1	SCREW 1/8-44 L=4.5
2	40902027	针杆	1	NEEDLE ROD
3	40903026	针杆下套	1	NEEDLE BAR BUSHING LOWER
4	40913013	导线钩	1	NEEDLE BAR BALACE
5	40909016	针杆连接杆	1	NEEDLE BAR CLAMP
6	409S11024	螺钉	1	SCREW 9/64-40 L=12
7	40903035	针杆上套	1	NEEDLE BAR BUSHING UPPER
8	40909017	针杆轴衬套	1	NEEDLE BAR SLIDE BLOCK A
9	41017001	机针	1	NEEDLE TQX1 #16
10	40905007	针杆杠杆	1	NEEDLE BAR DRIVING LEVER
11	L02008	螺钉	2	SCREW M6 L=14
12	409S20025	合叶螺钉	1	HINGE SCREW D=9.54 H=8
13	40928027	垫圈	1	WASHER 7.5X16X1
14	409S11009	半沉头螺钉	2	SCREW 11/64-40 L=9.5
15	40912046	盖板	1	THRUST HOLDER
16	40905009	连杆	1	CRANK ROD
17	40910009	偏心凸轮	1	ECCENTRIC CAM
18	409S14001	内六角平端紧定螺钉	1	SCREW 1/4-40 L=6
19	40923012	油线	0.08	OIL WICK
20	40923005	油毡	1	OIL RETAINNING FELT
21	40323013	油线2x2	0.125	OIL WICK
22	1409NS14002	内六角锥端紧定螺钉	1	HESAGON CONE END FASTENING SCREW