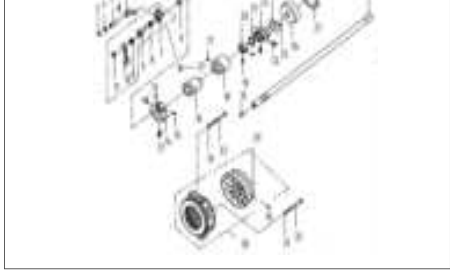


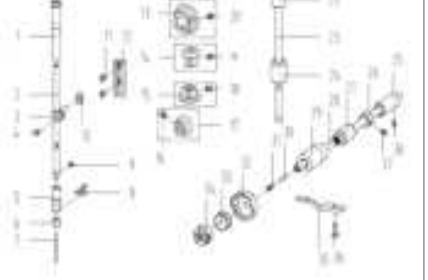
1. 机壳、外装分组件/Machine Frame & Miscellaneous Cover Components

序号 NO	公司件号 Part NO	零件描述 Description	数量 Number	公司件号 Part NO	零件描述 Description	数量 Number
1	101511001	Screw SM1/6*4-28 L=9	3	115013040	Thread tension asm.	1
2	10122003	Rubber plug	2	1126012	Tension release pin	1
3	115011003	Face plate	1	1126012	Tension release pin (H)	1
4	13813005	Thread guide left	1	10122014	Rubber ring	1
5	101511007	Screw SM1/6*4-28 L=9	1	101515005	Screw SM9/6*4-28 L=5.5	1
6	11022009	Face plate gasket	1	10103011	Thread tension base	1
7	11020090	LED asm	1	113827006	Thread take-up spring	1
8	101511001	Screw SM1/6*4-28 L=9	1	113827009	Thread take-up spring (H)	1
9	4032014	Rubber plug	1	142112015	Thread tension disk	2
10	10122004	Rubber plug	1	143112013	Disk stopper	1
11	10122005	Rubber plug	1	144115201	Thread tension post	1
12	101511004	Screw SM3/16*28 L=7	1	114272004	Thread tension spring	1
13	13812018	Thread take-up lever cover	1	11427050	Thread tension spring (H)	1
14	101511004	Screw SM3/16*28 L=7	1	146110120	Thread disk rotating stopper	1
15	13512004	3-hole thread guide	1	1471101017	Thread tension nut	1
16	10122005	Rubber plug	1	1481150130400	Thread tension asm	1
17	11419001	Knife	2	1150130500	Thread tension asm (H)	1
18	114151015	Screw SM9/6*4-28 L=6	1	1491122110	Rubber plug (one-hole)	1
19	2072002	Rubber plug	1	501101507	Screw SM1/6*4-28 L=6	1
20	13822008	Side plate gasket	1	10113004	Thread guide right	1
21	1382025	Slide plate	1	5210151010	Screw SM15/6*4-28 L=10.5	1
22	101511001	Screw SM15/6*4-28 L=10	1	53140156001	Nut SM15/6*4	1
23	11023304100	Electronic control box	1	5411413011	Thread guide	1
24	115013004	Screw M5 L=20	1	5510151002	Screw SM1/6*4-28 L=5.5	1
25	11433001	Washer	3	56113812019	Ruler stop stopper	1
26	10112009	Nut M5	5	5710151001	Screw SM1/6*4-28 L=6.5	1
27	10122006	Rubber plug	1	58115015006	Needle plate	1
28	10122007	Rubber plug	1	11315001	Needle plate (H)	1
29	10122010	Machine head stud	4	591015002	Slide plate	1
30	13850006	Screw SM3/16*28 L=7	1	6010127009	Slide plate spring	1
31	13812066	Thread tension guide plate	1	6110151019	Screw SM3/32*5.6 L=2	2
32	13810008	Thread tension post	1	621138500501	Screw M3 L=12	2
33	14112017	Thread tension disk	2	631382001	Rubber plug	1
34	11227001	Thread tension spring	1	64110230070	Control panel	1
35	115011026	Thread tension nut	1			



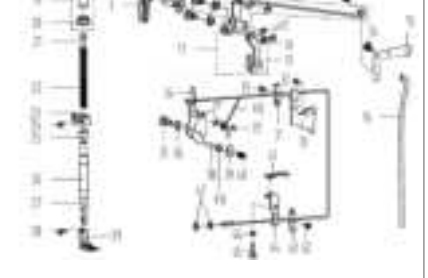
2. 上轴抽线分组件/Main Shaft & Thread Take-up Components

序号 NO	公司件号 Part NO	零件描述 Description	数量 Number	公司件号 Part NO	零件描述 Description	数量 Number
1	115020015	Thread take-up connecting rod pin	20	10108001	Main shaft thrust collar	1
2	10126001	Thread take-up connecting rod pin	1	211403002	Snap ring 20	1
3	101515001	Screw SM15/6*4-28 L=15	1	2211501005	Feed eccentric cam	1
4	10150002	Thread take-up connecting rod (H)	1	420006	Feed eccentric cam (H)	1
5	11305010	Thread take-up connecting rod	1	23112017	Cover plate	1
6	H05013	Snap ring 6	1	2410151013	Screw SM1/4*4-13	2
7	11128010	washer	1	2510151005	Screw SM9/6*4-28 L=2	2
8	10112003	Needle bar crank protecting plate	1	261280014	The rear seal sleeve	1
9	115030020	Thread take-up lever asm	1	2710122008	Oil seal	1
10	113380020	Thread take-up lever asm (H)	1	2810102026	Main shaft	1
11	10134001	Needle bearing	2	291101202	Hand wheel	1
12	11504007	Thread take-up motor	1	3011023038	Motor	1
13	101100040	Thread take-up crank (H)	1	311001009	Spring washer 5	3
14	10105002	Needle bar connecting rod	1	3211451301	Screw M5 L=20	3
15	101511001	Screw SM1/6*4-28 L=11	1	3311451301	Screw M5 L=22	2
16	10151004	Screw SM9/32*28 L=16	1	341001009	Spring washer 5	1
17	101511003	Screw SM9/32*28 L=16	1	3510122012	Rubber plug	1
18	113804014	Needle bar crank	1	36151009	Screw M5 L=8	1
19	115404010	Needle bar crank (H)	1	3711442208	Thread take-up lever nut	1
20	10151002	Screw SM1/4*4-16 L=6	2			
21	1150301500	Main shaft bushing front	1			
22	10151006	Screw SM1/6*4-28 L=7	1			
23	1002002	Main shaft bushing mid	1			
24	101514001	Screw SM 1/4*4-16 L=6	2			



3. 针杆、弯轴、下轴组件/Needle Bar & Upright Shaft & Hook Driving Shaft Compon

序号 NO	公司件号 Part NO	零件描述 Description	数量 Number	公司件号 Part NO	零件描述 Description	数量 Number
1	10103009	Needle bar bushing upper	1	1811015007	Screw SM1/4*4-28 L=7	2
2	11400339	Needle bar	1	2010151007	Screw SM1/4*4-28 L=7	2
3	10138002	Needle bar connecting rod	1	21113803012	Upright shaft bushing upper	1
4	101511005	Screw SM9/6*4-28 L=6	1	2311020027	Upright shaft	1
5	10103002	Needle bar bushing lower	1	2410403013	Upright shaft bushing lower	1
6	10103003	Needle bar bushing lower (H)	1	251113803014	Hook driving shaft bushing back	1
7	11420603	Needle bar thread guide (H)	1	2610108002	Hook driving shaft snap ring	1
8	10171001	Needle DB-114	1	2711020020	Lower shaft middle bushing	1
9	10117002	Needle DP-SK21 (H)	1	28113802303	Hook driving shaft	1
10	10122016	Lower bushing thread guide	1	11303001	Hook driving shaft bushing front	1
11	10113009	Lower bushing thread guide (L)	1	3011382001	Oil wick	1
12	101511006	Screw SM1/8*4 L=4.5	1	3110153005	set screw	1
13	10109001	Slide block	1	32111418007	Slide block	1
14	101511008	Screw SM1/16*4-28 L=8	2	11410202	Hook asm (H)	1
15	10109002	Needle bar guide	1	3311011803	Bobbin	1
16	10425004	Upper shaft bevel gear	1	3411218504	Bobbin case asm	1
17	10425003	Upper small bevel gear asm	1	3511011876	Finger postioner	1
18	10425002	Upper large bevel gear asm	1	3611425002	Finger postioner (H)	1
19	10151007	Screw SM1/4*4-16 L=7	2	36111651005	Screw SM1/6*4-28 L=13	1
20	10425001	Hook drive shaft bevel gear	1	3710151012	Screw SM11/6*4-28 L=4.8	1
21	10151007	Screw SM1/4*4-16 L=7	2	38111514020	Screw SM11/6*4-28 L=7	1



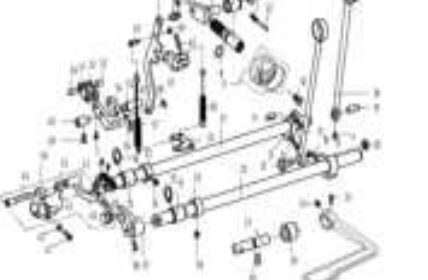
4. 压杆、自动抬压脚分组件/Presser Bar & Auto Lifter Components

序号 NO	公司件号 Part NO	零件描述 Description	数量 Number	公司件号 Part NO	零件描述 Description	数量 Number
1	10151010	Screw SM9/6*4-28 L=11	1	251012112	Pressure bar oil cover	1
2	10128002	Washer	1	2611380007	Presser bar bushing	1
3	1811029	Hand lifter	1	2711380209	Presser bar	1
4	O01004	Rubber ring	1	2810151009	Screw SM9/6*4-28 L=10.5	1
5	101100020	Hand lifter cam asm	1	291102160100	Presser foot asm	1
6	10152001	Presser foot	1	3011380030	Presser foot assembly	1
7	10126015	Washer	2	301121209	Wire release bracket upper	1
8	101120010	Lift front lever component	1	311121208	Wire release press plate	1
9	10112013	Knee lifter pull rod	1	3210151004	Screw SM1/6*28 L=7	1
10	H05003	Snap ring 5	2	3311511004	Screw M4 L=8	1
11	10112010	Lifting plate	1	34111420600	Wire release plate asm	1
12	101520004	Hinge screw SM3/16*32	1	3510152002	Wire release plate pin	1
13	101520003	Hinge screw SM15/6*28	1	3611028015	Washer	1
14	10112014	Knee lifter back lever	1	3711380209	Snap ring 5	5
15	10112015	Knee lifter connecting rod	1	3810126003	Thread release supporting pin	1
16	101120020	Knee lifter lever asm	1	3911012001	washer	1
17	113811018	Press regulating screw	1	401012020	Spring	1
18	1138N33002	Press regulating screw nut	1	411011202	Tube press plate	1
19	11381101800	Presser regulating screw nut	1	42113511004	Screw M4 L=8	1
20	113811028	Press regulating nut	1	431121208	Wire presser	1
21	10103003	Press regulating guide (H)	1	4411312001	Wire release bracket lower	1
22	113827010	Press regulating spring	1	45111653003	Screw SM15/6*28 L=14.5	1
23	113827010	Press regulating spring (H)	1	46100024	Spring washer	1
24	13806300	Presser bar guide bracket	1	47113512001	Nut M5	2
25	10151007	Screw SM1/4*4-16 L=8	1	4811427009	Reset spring	1
26	10151007	Screw SM1/4*4-16 L=8	1	49105012	Snap ring	1



6. 油润、油润检测组件/Oil Lubricating & Oil Measuring Components

序号 NO	公司件号 Part NO	零件描述 Description	数量 Number	公司件号 Part NO	零件描述 Description	数量 Number
1	138110300	Bobbin winder asm	1	171380206	Bobbin winder cam shaft	1
2	114511003	Screw M4 L=4	1	18109103	Screw M4 L=4	2
3	W01142	Washer 4	1	1913831102	Bobbin winder wheel	1
4	10113030	Thread press control plate	1	201001110	Ring	1
5	10111120	Winding pad	1	2111422062	Washer	1
6	13831101	Bobbin winder bed	1	221114511003	Screw SM3/16*28 L=10	3
7	H05006	Snap ring	1	231150130150	Thread tension asm.	1
8	10127061	Spring	1	24115011026	Bobbin winder tension nut	1
9	13821210	Regulating plate	1	2511427006	Spring	1
10	10110300	Bobbin winder cam	1	2611412015	Thread tension disk	2
11	509045	Screw M5 L=5	1	2711413022	Thread tension guide plate	1
12	138051060	Bobbin winder connecting rod	1	28112513004	Screw M1/6*4-28	1
13	13821103	spring	1	29114516001	Nut SM1/6*4-28	1
14	10127060	Oil pump	1	3011452013	Dring wheel	1
15	H05009	Snap ring 4	1	31151009	Screw M5 L=8	2
16	13802111	Bobbin winder main shaft	1	3211012025	Oil wick fixing plate	1



5. 送料分组件/Feed Mechanism Components

序号 NO	公司件号 Part NO	零件描述 Description	数量 Number	公司件号 Part NO	零件描述 Description	数量 Number
1	10105007	Reverse feed connecting rod	1	3410151002	Screw SM1/4*4-16 L=6	2
2	11426021	Connecting rod pin	1	3511062015	Bushing	2
3	10151003	Connecting rod pin (-7)	1	361403001	Snap ring 15	1
4	10101053	Feed regulator	1	381116511005	Screw SM1/6*4-28 L=13	1
5	10403017	Feed regulator bushing	1	3911414002	Feed dog	1
6	101511023	Screw SM1/6*28 L=6.5	1	11314001	Feed dog (H)	1
7	10126045	Feed regulator stud	1	40147000	Feed bar asm.	1
8	10122016	Rubber ring	1	4110151016	Screw SM3/16*28 L=14	1
9	101110700	Knob component				

